

LEA Name : Central Bucks SD
Address : 20 Welden Dr
Doylestown , PA 18901

County : Bucks
AUN Number : 122092102
LEA Type : SD

Annual Financial Report Accuracy Certification Statement

For Fiscal Year Ending
6/30/2022

Pennsylvania Department of Education
&
Office of Comptroller Operations

PDE-2056: Intermediate Unit

PDE-2057: School District, AVTS/CTC, Charter School,
and Special Program Jointure

CERTIFICATION: By signing this page I agree that the electronic data submitted is a complete and accurate statement of the financial operations and status of the local education agency for the fiscal year. It has been prepared in accordance with generally accepted accounting principles and established Commonwealth of PA reporting guidelines.


Chief School Administrator Signature

11.30.2022
Date


Board Secretary Signature

11/30/2022
Date

Barbara Markowitz

Contact Person

bmarkowitz@cbsd.org

Contact Person E-mail Address

(267)893-2077

Ext :

Contact Person Telephone Number

Contact Person Fax Number

Audit Certification
Annual Financial Report:
For Fiscal Year Ending **6/30/2022**
(Pursuant to PA School Code Section 218(b))

LEA Name : Central Bucks SD
AUN Number : 122092102
County : Bucks

Audit Certification Due: 12/31/2022

This certification is applicable to the Annual Financial Report data submitted through the Consolidated Financial Reporting System (CFRS).

CERTIFICATION: By signing this page I agree that the financial statements of the school have been properly audited as noted above pursuant to Article XXIV, and in the auditor's professional opinion, the Annual Financial Report (PDE-2057) submitted through CFRS is materially consistent with the audited financial statements.

Chief School Administrator

Board Secretary

Signature

Date

Signature

Date

Barbara Markowitz

Contact Person

bmarkowitz@cbsd.org

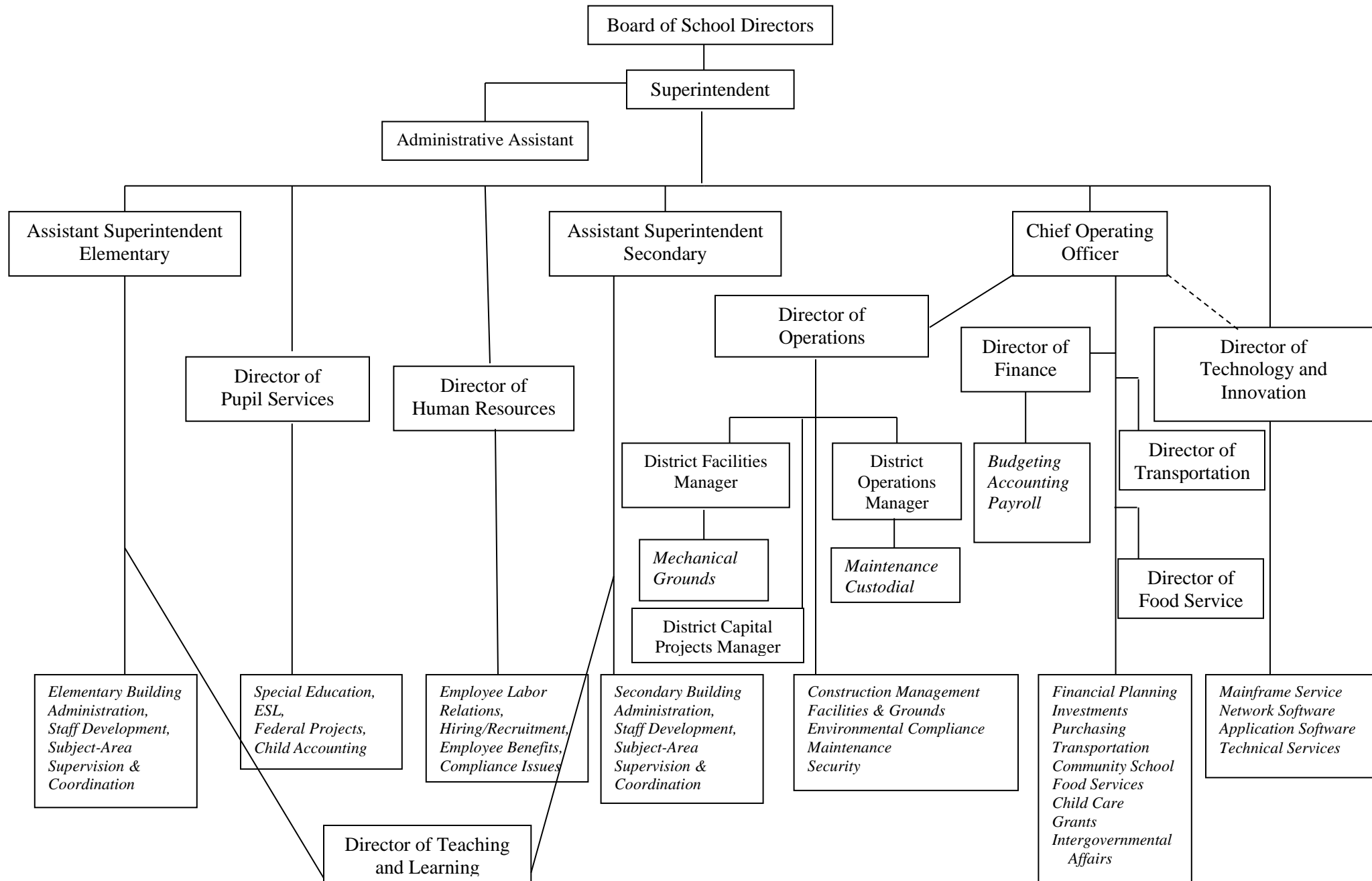
Contact Person E-mail Address

(267)893-2077 Ext :

Contact Person Telephone Number

Contact Person Fax Number

Central Bucks School District Organization Chart 2022-2023



Central Bucks School District
Notes to the Basic Financial Statements
June 30, 2021

Note 1 Summary of Significant Accounting Policies (Continued)

G. Short-Term Interfund Receivables/Payables

During the course of operations, transactions may occur between individual funds for interfund reimbursements or transfers. These receivables and payables are classified as “due from other funds” or “due to other funds” on the governmental funds balance sheet. These amounts are eliminated in the statement of net position, except for amounts due between governmental and business-type activities which, when present, are shown as internal balances.

H. Inventories

Inventory of purchased food and paper supplies within the proprietary fund is carried at cost using the first-in, first-out method of accounting and is subsequently charged to expense when consumed. Inventory of donated foods is valued at fair market value as established by the U.S. Department of Agriculture.

I. Capital Assets and Depreciation

Capital assets, which include land and land improvements, buildings and building improvements, furniture, fixtures, equipment, vehicles, and construction in progress, are reported in the applicable governmental or business-type activities columns in the government-wide financial statements. The School District defines a capital asset as an asset with an initial individual cost equal to or greater than \$5,000 or purchased with debt proceeds and must also have an estimated useful life in excess of one year. Capital assets are recorded at historical cost or estimated historical cost if purchased or constructed. Donated capital assets are recorded at estimated fair market value at the date of donation.

The costs of normal maintenance and repairs that do not add to the value of the asset or materially extend asset lives are not capitalized.

Capital assets of the School District are depreciated using the straight-line method over the following estimated useful lives:

	<u>Years</u>
Land improvements, buildings and building improvements	15-40
Furniture, fixtures, and equipment	5-20
Vehicles	8

<u>Val Number</u>	<u>Description</u>	<u>Justification</u>
12195	<p>REG: Current Year AFR Beginning Fund Balance must equal Prior Year AFR Ending Fund Balance. Justifications to this error must fully explain the situation that prompted a fund balance restatement. "Auditor Adjustment" is not a sufficient justification.</p> <p>Total Govt Funds, Beg Bal: \$78,313,442.00 PY Ending Bal, Govt Funds: \$78,637,205.00</p>	<p>Last year adjusting entries for accruals in Fund 10 VAL #12196 and a data entry error in Fund 39 as explained in VAL #12207 is the justification for this "Total" difference.</p>
12196	<p>REG - Fund 10: Current Year AFR Beginning Fund Balance must equal Prior Year AFR Ending Fund Balance. Justifications to this error must fully explain the situation that prompted a fund balance restatement. "Auditor Adjustment" is not a sufficient justification.</p> <p>REG Fund 10, Beg Fund Bal: \$43,789,912.00 PY Ending Fund Balance: \$44,599,567.00</p>	<p>Beginning fund balance is correct. Last year we received adjusting entries for accruals to programs after entering our AFR for 2020-2021.</p>
12207	<p>REG - Fund 39: Current Year AFR Beginning Fund Balance must equal Prior Year AFR Ending Fund Balance. Justifications to this error must fully explain the situation that prompted a fund balance restatement. "Auditor Adjustment" is not a sufficient justification.</p> <p>REG Fund 39, Beg Fund Bal: \$34,523,530.00 PY Ending Fund Balance: \$34,037,638.00</p>	<p>Due to a data entry error in 2020-2021 AFR we included \$485,892 in "Other current liabilities" field and Fund balance of \$34,037,638. Our opening Fund Balance for 2021-22 should reflect \$34,523,530.</p>
16230	<p>REP Fund 51 – Net Position - Beginning of Fiscal Year must equal Prior Year AFR, Net Position - End of Year. Justifications to this error must fully explain the situation that prompted a fund balance restatement. "Auditor Adjustment" is not a sufficient justification.</p> <p>REP Fund 51 – Net Position - Beginning of Fiscal Year: \$776,327.00 REP Fund 51, Prior Year AFR, Net Position - End of Year:\$799,585.00</p>	<p>Beginning fund balance is correct. Last year we received adjusting entries for accruals to programs after entering our AFR for 2020-2021.</p>
42420	<p>Expenditure Detail: Total current year 2700-513 expenditure varies from prior year by 10%. Correct the data or enter a justification.</p> <p>2700-513, AFR Exp Detail: \$8,037,734.79 2700-513, PY AFR Amount: \$6,739,611.61</p>	<p>Online learning was still an option for the first half of 2020-2021. Most students returned full time in September of the 2021-2022 school year.</p>

LEA : 122092102 Central Bucks SD

Printed 12/1/2022 8:18:28 AM

Amounts Expressed in Whole Dollars		<u>General Fund</u> <u>(10)</u>	<u>Student Sponsored</u> <u>Activity Fund</u> <u>(21)</u>	<u>Public Purpose Trust</u> <u>(27)</u>	<u>Other Compt Approved</u> <u>(28)</u>	<u>Athletic / Activity</u> <u>(29)</u>
Assets And Deferred Outflows Of Resources						
Assets						
0100	Cash and Cash Equivalents	63,070,366				
0110	Investments					
0120	Taxes Receivable	8,821,478				
0130	Due From Other Funds	(287,576)				
0141	Due From Other Governments					
0142	State Revenue Receivable	12,818,731				
0143	Federal Revenue Receivable	4,263,289				
0145	Other Intergovernmental Revenue Receivable					
0146	Due from Primary Government					
0147	Due from Component Unit					
0150	Other Receivables	726,477				
0170	Inventories	37,042				
0180	Prepaid Expenses (Expenditures)	194,662				
0190	Other Current Assets					
Total Assets		\$89,644,469				
0910	Deferred Outflows of Resources					
Total Assets And Deferred Outflows Of Resources		\$89,644,469				

LEA : 122092102 Central Bucks SD

Printed 12/1/2022 8:18:28 AM

Amounts Expressed in Whole Dollars		<u>Capital Reserve (690.</u> <u>1850)</u> <u>(31)</u>	<u>Capital Reserve (1431)</u> <u>(32)</u>	<u>Other Capital Projects</u> <u>Fund</u> <u>(39)</u>	<u>Debt Service</u> <u>(40)</u>	<u>Permanent</u> <u>(90)</u>
Assets And Deferred Outflows Of Resources						
Assets						
0100	Cash and Cash Equivalents			35,508,232		
0110	Investments					
0120	Taxes Receivable					
0130	Due From Other Funds			303,125		
0141	Due From Other Governments					
0142	State Revenue Receivable					
0143	Federal Revenue Receivable					
0145	Other Intergovernmental Revenue Receivable					
0146	Due from Primary Government					
0147	Due from Component Unit					
0150	Other Receivables					
0170	Inventories					
0180	Prepaid Expenses (Expenditures)					
0190	Other Current Assets					
Total Assets				\$35,811,357		
0910	Deferred Outflows of Resources					
Total Assets And Deferred Outflows Of Resources				\$35,811,357		

LEA : 122092102 Central Bucks SD

Printed 12/1/2022 8:18:28 AM

Amounts Expressed in Whole Dollars		<u>Total Governmental</u>
		<u>Funds</u>
Assets And Deferred Outflows Of Resources		
Assets		
0100 Cash and Cash Equivalents	98,578,598	
0110 Investments		
0120 Taxes Receivable	8,821,478	
0130 Due From Other Funds	15,549	
0141 Due From Other Governments		
0142 State Revenue Receivable	12,818,731	
0143 Federal Revenue Receivable	4,263,289	
0145 Other Intergovernmental Revenue Receivable		
0146 Due from Primary Government		
0147 Due from Component Unit		
0150 Other Receivables	726,477	
0170 Inventories	37,042	
0180 Prepaid Expenses (Expenditures)	194,662	
0190 Other Current Assets		
Total Assets	\$125,455,826	
0910 Deferred Outflows of Resources		
Total Assets And Deferred Outflows Of Resources	\$125,455,826	

LEA : 122092102 Central Bucks SD

Printed 12/1/2022 8:18:28 AM

Amounts Expressed in Whole Dollars		<u>General Fund</u> <u>(10)</u>	<u>Student Sponsored</u> <u>Activity Fund</u> <u>(21)</u>	<u>Public Purpose Trust</u> <u>(27)</u>	<u>Other Compt Approved</u> <u>(28)</u>	<u>Athletic / Activity</u> <u>(29)</u>
Liabilities And Deferred Inflows Of Resources And Fund Balances						
Liabilities						
0400	Due to Other Funds					
0411	Due to Other Governments					
0412	Due to Primary Government					
0413	Due to Component Unit					
0420	Accounts Payable	1,891,803				
0430	Contracts Payable					
0440	Current Portion of Long-Term Debt					
0450	Short-Term Payables					
0461	Accrued Salaries and Benefits	1,522,116				
0462	Payroll Deductions and Withholding	38,047,759				
0480	Unearned Revenues	211,745				
0490	Other Current Liabilities					
Total Liabilities		\$41,673,423				
0950	Deferred Inflows of Resources	1,851,116				
Fund Balances						
0810	Nonspendable Fund Balance					
0820	Restricted Fund Balance					
0830	Committed Fund Balance					
0840	Assigned Fund Balance	17,795,262				
0850	Unassigned Fund Balance	28,324,668				
Total Fund Balances		\$46,119,930				
Total Liabilities, Deferred Inflows Of Resources And Fund Balances		\$89,644,469				

LEA : 122092102 Central Bucks SD

Printed 12/1/2022 8:18:28 AM

Amounts Expressed in Whole Dollars		<u>Capital Reserve (690.</u> <u>1850)</u> <u>(31)</u>	<u>Capital Reserve (1431)</u> <u>(32)</u>	<u>Other Capital Projects</u> <u>Fund</u> <u>(39)</u>	<u>Debt Service</u> <u>(40)</u>	<u>Permanent</u> <u>(90)</u>
Liabilities And Deferred Inflows Of Resources And Fund Balances						
Liabilities						
0400	Due to Other Funds					
0411	Due to Other Governments					
0412	Due to Primary Government					
0413	Due to Component Unit					
0420	Accounts Payable			835,747		
0430	Contracts Payable					
0440	Current Portion of Long-Term Debt					
0450	Short-Term Payables					
0461	Accrued Salaries and Benefits					
0462	Payroll Deductions and Withholding					
0480	Unearned Revenues					
0490	Other Current Liabilities					
Total Liabilities				\$835,747		
0950	Deferred Inflows of Resources					
Fund Balances						
0810	Nonspendable Fund Balance					
0820	Restricted Fund Balance					
0830	Committed Fund Balance					
0840	Assigned Fund Balance			34,975,610		
0850	Unassigned Fund Balance					
Total Fund Balances				\$34,975,610		
Total Liabilities, Deferred Inflows Of Resources And Fund Balances				\$35,811,357		

LEA : 122092102 Central Bucks SD

Printed 12/1/2022 8:18:28 AM

Amounts Expressed in Whole Dollars		<u>Total Governmental</u> <u>Funds</u>
Liabilities And Deferred Inflows Of Resources And Fund Balances		
Liabilities		
0400 Due to Other Funds		
0411 Due to Other Governments		
0412 Due to Primary Government		
0413 Due to Component Unit		
0420 Accounts Payable	2,727,550	
0430 Contracts Payable		
0440 Current Portion of Long-Term Debt		
0450 Short-Term Payables		
0461 Accrued Salaries and Benefits	1,522,116	
0462 Payroll Deductions and Withholding	38,047,759	
0480 Unearned Revenues	211,745	
0490 Other Current Liabilities		
Total Liabilities	\$42,509,170	
0950 Deferred Inflows of Resources	1,851,116	
Fund Balances		
0810 Nonspendable Fund Balance		
0820 Restricted Fund Balance		
0830 Committed Fund Balance		
0840 Assigned Fund Balance	52,770,872	
0850 Unassigned Fund Balance	28,324,668	
Total Fund Balances	\$81,095,540	
Total Liabilities, Deferred Inflows Of Resources And Fund Balances	\$125,455,826	

LEA : 122092102 Central Bucks SD

Printed 12/1/2022 8:18:37 AM

Amounts Expressed in Whole Dollars	<u>General Fund</u> <u>(10)</u>	<u>Student Sponsored</u> <u>Activity Fund</u> <u>(21)</u>	<u>Public Purpose Trust</u> <u>(27)</u>	<u>Other Compt Approved</u> <u>(28)</u>	<u>Athletic / Activity</u> <u>(29)</u>
Revenues					
6000 Revenue from Local Sources	277,467,361				
7000 Revenue from State Sources	73,318,164				
8000 Revenue from Federal Sources	4,942,954				
Total Revenues	\$355,728,479				
Expenditures					
1000 Instruction	220,724,504				
2000 Support Services	102,488,087				
3000 Operation of Non-Instructional Services	9,206,352				
4000 Facilities Acquisition, Construction and Improvement Services					
5110 Debt Service	4,432,492				
5130 Refund of Prior Year Revenues / Receipts					
5140 Leases					
Total Expenditures	\$336,851,435				
Excess (Deficiency) Of Revenues Over Expenditures	\$18,877,044				
Other Financing Sources (Uses)					
9110 Face Value of Bonds Issued					
9120 Proceeds from Refunding of Bonds					
9130 Bond Premiums					
9200 Proceeds from Extended-Term Financing and Leases					
9300 Interfund Transfers - IN					
9400 Sale of or Compensation for Loss of Fixed Assets	34,850				
9710 Transfers from Component Units					
9720 Transfers from Primary Governments					
9910 Other Financing Sources Not Listed in the 9000 Series					
9990 Insurance Recoveries					
5120 Debt Service – Refunded Bonds					
5150 Bond Discounts					
5200 Interfund Transfers – Out	16,581,876				
5300 Transfers Out to Component Units/Primary Governments					
Total Other Financing Sources (Uses)	(\$16,547,026)				

Amounts Expressed in Whole Dollars		<u>Capital Reserve (690.</u> <u>1850)</u> <u>(31)</u>	<u>Capital Reserve (1431)</u> <u>(32)</u>	<u>Other Capital Projects</u> <u>Fund</u> <u>(39)</u>	<u>Debt Service</u> <u>(40)</u>	<u>Permanent</u> <u>(90)</u>
Revenues						
6000	Revenue from Local Sources			410,824		
7000	Revenue from State Sources					
8000	Revenue from Federal Sources					
Total Revenues				\$410,824		
Expenditures						
1000	Instruction			283,604		
2000	Support Services			5,335,110		
3000	Operation of Non-Instructional Services					
4000	Facilities Acquisition, Construction and Improvement Services			10,921,906		
5110	Debt Service					
5130	Refund of Prior Year Revenues / Receipts					
5140	Leases					
Total Expenditures				\$16,540,620		
Excess (Deficiency) Of Revenues Over Expenditures				(\$16,129,796)		
Other Financing Sources (Uses)						
9110	Face Value of Bonds Issued					
9120	Proceeds from Refunding of Bonds					
9130	Bond Premiums					
9200	Proceeds from Extended-Term Financing and Leases					
9300	Interfund Transfers - IN			16,581,876		
9400	Sale of or Compensation for Loss of Fixed Assets					
9710	Transfers from Component Units					
9720	Transfers from Primary Governments					
9910	Other Financing Sources Not Listed in the 9000 Series					
9990	Insurance Recoveries					
5120	Debt Service – Refunded Bonds					
5150	Bond Discounts					
5200	Interfund Transfers – Out					
5300	Transfers Out to Component Units/Primary Governments					
Total Other Financing Sources (Uses)				\$16,581,876		

LEA : 122092102 Central Bucks SD

Printed 12/1/2022 8:18:37 AM

Amounts Expressed in Whole Dollars		<u>Total Governmental Funds</u>
Revenues		
6000	Revenue from Local Sources	277,878,185
7000	Revenue from State Sources	73,318,164
8000	Revenue from Federal Sources	4,942,954
Total Revenues		\$356,139,303
Expenditures		
1000	Instruction	221,008,108
2000	Support Services	107,823,197
3000	Operation of Non-Instructional Services	9,206,352
4000	Facilities Acquisition, Construction and Improvement Services	10,921,906
5110	Debt Service	4,432,492
5130	Refund of Prior Year Revenues / Receipts	
5140	Leases	
Total Expenditures		\$353,392,055
Excess (Deficiency) Of Revenues Over Expenditures		\$2,747,248
Other Financing Sources (Uses)		
9110	Face Value of Bonds Issued	
9120	Proceeds from Refunding of Bonds	
9130	Bond Premiums	
9200	Proceeds from Extended-Term Financing and Leases	
9300	Interfund Transfers - IN	16,581,876
9400	Sale of or Compensation for Loss of Fixed Assets	34,850
9710	Transfers from Component Units	
9720	Transfers from Primary Governments	
9910	Other Financing Sources Not Listed in the 9000 Series	
9990	Insurance Recoveries	
5120	Debt Service – Refunded Bonds	
5150	Bond Discounts	
5200	Interfund Transfers – Out	16,581,876
5300	Transfers Out to Component Units/Primary Governments	
Total Other Financing Sources (Uses)		\$34,850

Amounts Expressed in Whole Dollars		<u>General Fund</u> <u>(10)</u>	<u>Student Sponsored</u> <u>Activity Fund</u> <u>(21)</u>	<u>Public Purpose Trust</u> <u>(27)</u>	<u>Other Compt Approved</u> <u>(28)</u>	<u>Athletic / Activity</u> <u>(29)</u>
Special And Extraordinary Items						
9920	Special Items – Gains					
9930	Extraordinary Items – Gains					
5520	Special Items – Losses					
5530	Extraordinary Items – Losses					
Net Change In Fund Balances		\$2,330,018				
Fund Balance						
0001	Fund Balance - Beginning of Fiscal Year	43,789,912				
Fund Balance - End Of Year		\$46,119,930				

Amounts Expressed in Whole Dollars		<u>Capital Reserve (690.</u> <u>1850)</u> <u>(31)</u>	<u>Capital Reserve (1431)</u> <u>(32)</u>	<u>Other Capital Projects</u> <u>Fund</u> <u>(39)</u>	<u>Debt Service</u> <u>(40)</u>	<u>Permanent</u> <u>(90)</u>
Special And Extraordinary Items						
9920	Special Items – Gains					
9930	Extraordinary Items – Gains					
5520	Special Items – Losses					
5530	Extraordinary Items – Losses					
Net Change In Fund Balances				\$452,080		
Fund Balance						
0001	Fund Balance - Beginning of Fiscal Year			34,523,530		
Fund Balance - End Of Year				\$34,975,610		

Amounts Expressed in Whole Dollars		<u>Total Governmental Funds</u>
Special And Extraordinary Items		
9920	Special Items – Gains	
9930	Extraordinary Items – Gains	
5520	Special Items – Losses	
5530	Extraordinary Items – Losses	
Net Change In Fund Balances		\$2,782,098
Fund Balance		
0001	Fund Balance - Beginning of Fiscal Year	78,313,442
Fund Balance - End Of Year		\$81,095,540

LEA : 122092102 Central Bucks SD

Printed 12/1/2022 8:18:41 AM

Amounts Expressed in Whole Dollars		<u>Food Service</u> <u>(51)</u>	<u>Child Care</u> <u>Operations</u> <u>(52)</u>	<u>Other Enterprise</u> <u>(58)</u>	<u>TOTAL</u>	<u>Internal Service</u> <u>(60)</u>
Assets And Deferred Outflows Of Resources						
Current Assets						
0100	Cash and Cash Equivalents	359,545			359,545	
0110	Investments					
0130	Due From Other Funds	(15,073)			(15,073)	
0141	Due From Other Governments					
0142	State Revenue Receivable	66,340			66,340	
0143	Federal Revenue Receivable	2,264,582			2,264,582	
0146	Due from Primary Government					
0147	Due from Component Unit					
0150	Other Receivables					
0170	Inventories					
0180	Prepaid Expenses (Expenditures)					
0190	Other Current Assets					
Total Current Assets		\$2,675,394			\$2,675,394	
Noncurrent Assets						
0211	Land					
0212	Site Improvements (Net)					
0220	Buildings and Building Improvements (Net)					
0230	Machinery, Equipment and Furniture (Net)	303,278			303,278	
0250	Construction in Progress					
0260	Long Term Prepayments					
0290	Other Noncurrent Assets					
Total Noncurrent Assets		\$303,278			\$303,278	
0910	Deferred Outflows of Resources					
Total Assets And Deferred Outflows Of Resources		\$2,978,672			\$2,978,672	

Amounts Expressed in Whole Dollars	<u>Food Service</u> <u>(51)</u>	<u>Child Care</u> <u>Operations</u> <u>(52)</u>	<u>Other Enterprise</u> <u>(58)</u>	<u>TOTAL</u>	<u>Internal Service</u> <u>(60)</u>
Liabilities And Deferred Inflows Of Resources And Net Position					
Current Liabilities					
0400 Due to Other Funds					
0411 Due to Other Governments					
0413 Due to Component Unit					
0420 Accounts Payable	338,841			338,841	
0430 Contracts Payable					
0440 Current Portion of Long-Term Debt					
0450 Short-Term Payables					
0461 Accrued Salaries and Benefits					
0462 Payroll Deductions and Withholding					
0480 Unearned Revenues	244,690			244,690	
0490 Other Current Liabilities					
Total Current Liabilities	\$583,531			\$583,531	
Noncurrent Liabilities					
0510 Bonds Payable					
0520 Extended-Term Financing Agreements Payable					
0530 Lease Obligations					
0540 Accumulated Compensated Absences					
0550 Authority Lease Obligations					
0560 Other Post-Employment Benefits (OPEB)					
0570 Net Pension Liability					
0599 Other Noncurrent Liabilities					
Total Noncurrent Liabilities					
Total Liabilities	\$583,531			\$583,531	
0950 Deferred Inflows of Resources					
Net Position					
0791 Net Investment in Capital Assets					
0008 Restricted Net Position (0792 – 0798)	2,395,141			2,395,141	
0799 Unrestricted Net Position					
Total Net Position	\$2,395,141			\$2,395,141	
Total Liabilities And Deferred Inflows Of Resources And Net Position	\$2,978,672			\$2,978,672	

Amounts Expressed in Whole Dollars	<u>Food Service</u> <u>(51)</u>	<u>Child Care Operations</u> <u>(52)</u>	<u>Other Enterprise</u> <u>(58)</u>	<u>TOTAL</u>	<u>Internal Service</u> <u>(60)</u>
Operating Revenues					
6600 Food Service Revenue	246,608			246,608	
0071 Charges for Services					
0072 Other Operating Revenue					
Total Operating Revenues	\$246,608			\$246,608	
Operating Expenses					
100 Personnel Services – Salaries					
200 Personnel Services – Employee Benefits					
300 Purchased Professional and Technical Services	25,356			25,356	
400 Purchased Property Services	499,576			499,576	
500 Other Purchased Services	7,314,979			7,314,979	
600 Supplies	67,176			67,176	
740 Depreciation	53,142			53,142	
810 Dues and Fees					
880 Refunds of Prior Years' Receipts					
890 Miscellaneous Expenditures					
Total Operating Expenses	\$7,960,229			\$7,960,229	
Operating Income (Loss)	(\$7,713,621)			(\$7,713,621)	
Non Operating Revenues (Expenses)					
6500 Earnings on Investments	330			330	
6920 Contributions and Donations from Private Sources					
6930 Gains or Losses on Sale of Fixed Assets					
6991 Refunds of a Prior Year Expenditure					
7000 Revenue from State Sources	251,595			251,595	
8000 Revenue from Federal Sources	9,080,514			9,080,514	
9990 Insurance Recoveries					
820 Claims and Judgments Against the LEA					
830 Interest					
TOTAL Non Operating Revenues (Expenses)	\$9,332,439			\$9,332,439	
Income (Loss) Before Contributions And Transfers	\$1,618,818			\$1,618,818	

Amounts Expressed in Whole Dollars	<u>Food Service</u> <u>(51)</u>	<u>Child Care Operations</u> <u>(52)</u>	<u>Other Enterprise</u> <u>(58)</u>	<u>TOTAL</u>	<u>Internal Service</u> <u>(60)</u>
Contributions, Transfers, and Special and Extraordinary Items					
5200 Interfund Transfers – Out					
5300 Transfers Out to Component Units/Primary Governments					
5520 Special Items – Losses					
5530 Extraordinary Items – Losses					
9300 Interfund Transfers - IN					
9500 Capital Contributions					
9700 Transfers IN From Component Units/Primary Governments					
9920 Special Items – Gains					
9930 Extraordinary Items – Gains					
Change In Net Position	\$1,618,818			\$1,618,818	
0002 Net Position - Beginning of Fiscal Year	776,327			776,327	
0003 Accounting Changes / Residual Equity Transfers					
Net Position - End Of Year	\$2,395,145			\$2,395,145	

LEA : 122092102 Central Bucks SD

Printed 12/1/2022 8:18:53 AM

Amounts Expressed in Whole Dollars	<u>Food Service</u> <u>(51)</u>	<u>Child Care Operations</u> <u>(52)</u>	<u>Other Enterprise</u> <u>(58)</u>	<u>TOTAL</u>	<u>Internal Service(60)</u>
Cash Flows From Operating Activities					
0011 Cash Receipts From Users	264,317			264,317	
0012 Cash Receipts From Assessments Made to Other Funds					
0013 Cash Receipts From Earnings on Investments					
0014 Cash Receipts From Other Operating Revenue					
0015 Cash Payments To Employees For Services					
0016 Cash Payments For Insurance Claims					
0017 Cash Payments To Suppliers For Goods and Services	8,900,421			8,900,421	
0018 Cash Payments For Other Operating Expenses					
Net Cash Provided By (Used For) Operating Activities	(\$8,636,104)			(\$8,636,104)	
Cash Flows From Non-Capital Financing Activities					
0021 Receipts From Local Sources - 6000					
0022 Receipts From State Sources - 7000	185,255			185,255	
0023 Receipts From Federal Sources -8000	8,768,730			8,768,730	
0024 Notes and Loans Received (Repaid)					
0025 Interest Paid on Notes/Loans - 5100-830					
0026 Operating Transfers In (Out)/Residual Equity Trans					
0027 Operating Transfers In (Out) Primary Government / Comp Unit					
0028 Receipts From Refund of Prior Year Expenditures - 6991					
0029 Special and Extraordinary Gains (losses)					
0030 Receipts from Insurance Recoveries -9990					
Net Cash Prov By (Used for) Non-Capital Financing Activities	\$8,953,985			\$8,953,985	
Cash Flows From Capital and Related Financing Activities					
0031 Payments For Fac Acq, Const, and Imp - 4000					
0032 Gain / (Loss) on Sale of Fixed Assets - 6930	(26,125)			(26,125)	
0033 Proceeds From Extended Term Financing - 9200					
0034 Principal Paid on Financing Agreements					
0035 Interest Paid on Financing Agreements - 5100-830	330			330	
0036 (Inc) Dec in Contributed Capital					
Net Cash Prov By (Used for) Capital and Related Financing Activities	(\$25,795)			(\$25,795)	
Cash Flows From Investing Activities					
0041 Earnings on Investments - 6500					
0042 Purchase of Inv Securities / Deposits to Inv Pools					
0043 Receipts From Investment Pool Withdrawals					
0044 Proceeds from Sale and Maturity of Inv Securities					

LEA : 122092102 Central Bucks SD

Printed 12/1/2022 8:18:53 AM

0045 Loans Received (Paid)

Net Cash Prov By (Used for) Investing Activities

LEA : 122092102 Central Bucks SD

Printed 12/1/2022 8:18:53 AM

	<u>Food Service</u> <u>(51)</u>	<u>Child Care Operations</u> <u>(52)</u>	<u>Other Enterprise</u> <u>(58)</u>	<u>TOTAL</u>	<u>Internal Service</u> <u>(60)</u>
Net Increase (Decrease) in Cash Flows	292,086			292,086	
0004 Cash and Cash Equivalents Beginning of Year	67,459			67,459	
Cash and Cash Equivalents at Year End	\$359,545			\$359,545	
<hr/>					
Reconciliation of Operating Income (Loss) To Net Cash Provided by (Used For) Operating Activities					
0005 Operating Income (Loss) per REP	(7,713,621)			(7,713,621)	
Adjustments					
0051 Depreciation and Net Amortization	53,142			53,142	
0052 Provision for Uncollectible Accounts					
0053 Other Adjustments	407,375			407,375	
Effect of Changes in Assets, Liabilities, Deferred Outflows and Deferred Inflows					
0054 (Inc) Dec In Accounts Receivable (0120-0150)					
0055 Advances to Other Funds (0160)	(840,000)			(840,000)	
0056 (Inc) Dec in Inventories (0170)					
0057 (Inc) Dec in Prepaid Expenses (0180)					
0058 (Inc) Dec in Other Current or Noncurrent Assets					
0064 Deferred Outflows (0910)					
0059 Inc (Dec) in Accounts Payable (0400-0450)	(560,708)			(560,708)	
0060 Inc (Dec) in Accrued Salaries/Benefits (0461)					
0065 Inc (Dec) in Net Pension Liabilities (0570)					
0066 Inc (Dec) in Other Postemp Benefit Oblig (0560)					
0061 Inc (Dec) in Payroll Deductions/Withholding (0462)					
0062 Inc (Dec) in Unearned Revenue (0480)	17,709			17,709	
0063 Inc (Dec) in Other Current or Noncurrent Liabilities					
0067 Deferred Inflows (0950)					
Total Adjustments	(\$922,482)			(\$922,482)	
Cash Provided By (Used for) Total	(\$8,636,103)			(\$8,636,103)	
<hr/>					

COMBINED STATEMENT OF CASH FLOWS
SCHEDULE OF NONCASH INVESTING, CAPITAL, AND FINANCING ACTIVITIES

Explanation of Transaction and Balance Sheet Effect	Amount
Total	

LEA : 122092102 Central Bucks SD

Printed 12/1/2022 8:18:58 AM

Amounts Expressed in Whole Dollars	<u>Private Purpose Trust</u> <u>(71)</u>	<u>Investment Trust</u> <u>(72)</u>	<u>Pension Trust</u> <u>(73)</u>	<u>Student Activity Custodial</u> <u>(81)</u>
Assets And Deferred Outflows Of Resources				
Assets				
0100 Cash and Cash Equivalents	130,953			
0110 Investments	1,211,341			
0130 Due From Other Funds				
0140 Due from Other Governments, Primary Government and Component Units				
0150 Other Receivables				
0170 Inventories				
0180 Prepaid Expenses (Expenditures)				
0190 Other Current Assets				
0220 Buildings and Building Improvements (Net)				
0230 Machinery, Equipment and Furniture (Net)				
Total Assets	\$1,342,294			
0910 Deferred Outflows of Resources				
Total Assets And Deferred Outflows Of Resources	\$1,342,294			

LEA : 122092102 Central Bucks SD

Printed 12/1/2022 8:18:58 AM

Amounts Expressed in Whole Dollars		<u>Other Custodial</u> <u>(89)</u>	<u>Fiduciary Component Units</u> <u>(98)</u>	<u>Total Fiduciary Funds</u>
Assets And Deferred Outflows Of Resources				
Assets				
0100	Cash and Cash Equivalents			130,953
0110	Investments			1,211,341
0130	Due From Other Funds			
0140	Due from Other Governments, Primary Government and Component Units			
0150	Other Receivables			
0170	Inventories			
0180	Prepaid Expenses (Expenditures)			
0190	Other Current Assets			
0220	Buildings and Building Improvements (Net)			
0230	Machinery, Equipment and Furniture (Net)			
Total Assets				\$1,342,294
0910	Deferred Outflows of Resources			
Total Assets And Deferred Outflows Of Resources				\$1,342,294

LEA : 122092102 Central Bucks SD

Printed 12/1/2022 8:18:58 AM

Amounts Expressed in Whole Dollars	<u>Private Purpose Trust</u> <u>(71)</u>	<u>Investment Trust</u> <u>(72)</u>	<u>Pension Trust</u> <u>(73)</u>	<u>Student Activity Custodial</u> <u>(81)</u>
Liabilities, Deferred Inflows Of Resources And Net Position				
Liabilities				
0400 Due to Other Funds				
0410 Due to Other Governments, Primary Government and Component Units				
0420 Accounts Payable				
0430 Contracts Payable				
0450 Short-Term Payables				
0460 Payroll Accruals and Withholdings				
0480 Unearned Revenues				
0490 Other Current Liabilities				
Total Liabilities				
0950 Deferred Inflows of Resources				
Net Position				
0791 Net Investment in Capital Assets	1,342,294			
0009 Restricted Net Position (0792 – 0798)				
0799 Unrestricted Net Position				
Total Net Position				
Total Liabilities, Deferred Inflows Of Resources And Net Position				

LEA : 122092102 Central Bucks SD

Printed 12/1/2022 8:18:58 AM

Amounts Expressed in Whole Dollars		<u>Other Custodial</u> <u>(89)</u>	<u>Fiduciary Component Units</u> <u>(98)</u>	<u>Total Fiduciary Funds</u>
Liabilities, Deferred Inflows Of Resources And Net Position				
Liabilities				
0400	Due to Other Funds			
0410	Due to Other Governments, Primary Government and Component Units			
0420	Accounts Payable			
0430	Contracts Payable			
0450	Short-Term Payables			
0460	Payroll Accruals and Withholdings			
0480	Unearned Revenues			
0490	Other Current Liabilities			
Total Liabilities				
0950	Deferred Inflows of Resources			
Net Position				
0791	Net Investment in Capital Assets			1,342,294
0009	Restricted Net Position (0792 – 0798)			
0799	Unrestricted Net Position			
Total Net Position				\$1,342,294
Total Liabilities, Deferred Inflows Of Resources And Net Position				\$1,342,294

LEA : 122092102 Central Bucks SD

Printed 12/1/2022 8:19:01 AM

Amounts Expressed in Whole Dollars	<u>Private Purpose Trust</u> <u>(71)</u>	<u>Investment Trust</u> <u>(72)</u>	<u>Pension Trust</u> <u>(73)</u>	<u>Student Activity</u> <u>Custodial</u> <u>(81)</u>	<u>Other Custodial</u> <u>(89)</u>	<u>Fiduciary Component</u> <u>Units</u> <u>(98)</u>
Additions						
0091 Gifts and Contributions	31,102					
0095 Net Investment Earnings						
0092 Other Additions						
Deductions						
0093 Scholarships Awarded						
0094 Other Deductions						
Change In Net Position	\$31,102					
0006 Net Position – Beginning of Fiscal Year	1,311,192					
0007 Net Position Held in Trust for Pension Benefits						
Net Position - End of Fiscal Year	\$1,342,294					

LEA : 122092102 Central Bucks SD

Printed 12/1/2022 8:19:01 AM

Amounts Expressed in Whole Dollars		<u>Total Fiduciary</u>
		<u>Funds</u>
Additions		
0091	Gifts and Contributions	31,102
0095	Net Investment Earnings	
0092	Other Additions	
Deductions		
0093	Scholarships Awarded	
0094	Other Deductions	
Change In Net Position		\$31,102
0006	Net Position – Beginning of Fiscal Year	1,311,192
0007	Net Position Held in Trust for Pension Benefits	
Net Position - End of Fiscal Year		\$1,342,294

LEA : 122092102 Central Bucks SD

General Fund (10)

Printed 12/1/2022 8:19:05 AM

Page - 1 of 4

	Revenue Reported In Current Year	Current Year Tax Accrual	Prior Year Tax Accrual	Taxes Collected In Current Year
Revenue from Local Sources				
6111 Current Real Estate Taxes	225,315,492.44		169,849.70	225,485,342.14
6112 Interim Real Estate Taxes	1,228,510.26	380,962.70	240,495.39	1,088,042.95
6113 Public Utility Realty Taxes	252,931.16			252,931.16
6151 Current Act 511 Earned Income Taxes	30,644,182.45	5,131,935.47	5,191,210.00	30,703,456.98
6153 Current Act 511 Real Estate Transfer Taxes	8,297,618.38	798,115.16	560,266.21	8,059,769.43
6411 Delinquent Real Estate Taxes	2,302,749.11	894,583.08	549,251.31	1,957,417.34
6413 Delinquent Public Utility Realty Tax	117,825.06			117,825.06
6451 Delinquent Act 511 Earned Income Taxes	1,805,391.93	178,726.86	247,827.50	1,874,492.57
6500 Earnings on Investments	343,360.23			
6700 Revenues from LEA Activities	233,441.28			
6832 Federal IDEA Revenue Received as Pass Through	2,546,007.45			
6910 Rentals	30,721.92			
6941 Regular Day School Tuition	85,253.18			
6943 Adult Education Tuition	84,305.67			
6944 Receipts from Other LEAs in Pennsylvania - Education	613,379.11			
6980 Revenue from Community Services Activities	3,507,181.19			
6991 Refunds of a Prior Year Expenditure	58,410.41			
6999 Other Revenues Not Specified Above	600.00			
TOTAL Revenue from Local Sources	\$277,467,361.23	\$7,384,323.27	\$6,958,900.11	\$269,539,277.63

	Revenue Reported In Current Year			
<u>Revenue from State Sources</u>				
7111 Basic Education Funding-Formula	19,233,626.18			
7112 Basic Education Funding-Social Security	6,358,176.30			
7160 Tuition for Orphans Subsidy	82,416.18			
7271 Special Education funds for School-Aged Pupils	7,527,635.58			
7311 Pupil Transportation Subsidy	2,144,379.85			
7312 Nonpublic and Charter School Pupil Transportation Subsidy	455,070.00			
7320 Rental and Sinking Fund Payments / Building Reimbursement Subsidy	1,008,535.79			
7330 Health Services (Medical, Dental, Nurse, Act 25)	340,299.67			
7340 State Property Tax Reduction Allocation	6,270,963.27			
7361 School Safety and Security Grants	5,488.00			
7505 Ready to Learn Block Grant	1,024,042.00			
7820 State Share of Retirement Contributions	28,867,531.61			
TOTAL Revenue from State Sources	\$73,318,164.43			

	Revenue Reported In Current Year			
<u>Revenue from Federal Sources</u>				
8514 NCLB, Title I - Improving the Academic Achievement of the Disadvantaged	707,829.28			
8515 NCLB, Title II - Preparing, Training and Recruiting High Quality Teachers and Principals	252,469.21			
8516 NCLB, Title III - Language Instruction for Limited English Proficient and Immigrant Students	82,065.85			
8517 NCLB, Title IV - 21St Century Schools	31,354.40			
8742 Governor's Emergency Education Relief Fund (GEER)	3,550.00			
8744 ARP ESSER - Elementary and Secondary School Emergency Relief Fund	1,353,382.32			
8746 ARP IDEA	549,318.11			
8749 Other CARES Act Funding	4,211.00			
8751 ARP ESSER Learning Loss	4,736.15			
8752 ARP ESSER Summer Programs	790.43			
8810 School-Based Access Medicaid Reimbursement Program (SBAP) Reimbursements (Access)	1,859,866.00			
8820 Medical Assistance Reimbursement for Administrative Claiming (Quarterly) Program	93,381.50			
TOTAL Revenue from Federal Sources	\$4,942,954.25			

		Revenue Reported In Current Year			
<u>Other Financing Sources</u>					
9400	Sale of or Compensation for Loss of Fixed Assets	34,850.00			
TOTAL Other Financing Sources		\$34,850.00			
TOTAL FROM ALL SOURCES		\$355,763,329.91	\$7,384,323.27	\$6,958,900.11	\$269,539,277.63

LEA : 122092102 Central Bucks SD

Printed 12/1/2022 8:19:09 AM

	<u>General Fund (10)</u>	<u>Student Sponsored Activity Fund (21)</u>	<u>Public Purpose Trust (27)</u>	<u>Other Compt Approved (28)</u>	<u>Athletic / Activity (29)</u>	<u>Capital Reserve (690, 1850) (31)</u>
6000 Revenue from Local Sources						
6111 Current Real Estate Taxes	225,315,492.44					
6112 Interim Real Estate Taxes	1,228,510.26					
6113 Public Utility Realty Taxes	252,931.16					
6151 Current Act 511 Earned Income Taxes	30,644,182.45					
6153 Current Act 511 Real Estate Transfer Taxes	8,297,618.38					
6411 Delinquent Real Estate Taxes	2,302,749.11					
6413 Delinquent Public Utility Realty Tax	117,825.06					
6451 Delinquent Act 511 Earned Income Taxes	1,805,391.93					
6500 Earnings on Investments	343,360.23					
6700 Revenues from LEA Activities	233,441.28					
6832 Federal IDEA Revenue Received as Pass Through	2,546,007.45					
6910 Rentals	30,721.92					
6941 Regular Day School Tuition	85,253.18					
6943 Adult Education Tuition	84,305.67					
6944 Receipts from Other LEAs in Pennsylvania - Education	613,379.11					
6980 Revenue from Community Services Activities	3,507,181.19					
6991 Refunds of a Prior Year Expenditure	58,410.41					
6999 Other Revenues Not Specified Above	600.00					
6000 Total Revenue from Local Sources	\$277,467,361.23					
7000 Revenue from State Sources						
7111 Basic Education Funding-Formula	19,233,626.18					
7112 Basic Education Funding-Social Security	6,358,176.30					
7160 Tuition for Orphans Subsidy	82,416.18					
7271 Special Education funds for School-Aged Pupils	7,527,635.58					
7311 Pupil Transportation Subsidy	2,144,379.85					
7312 Nonpublic and Charter School Pupil Transportation Subsidy	455,070.00					
7320 Rental and Sinking Fund Payments / Building Reimbursement Subsidy	1,008,535.79					
7330 Health Services (Medical, Dental, Nurse, Act 25)	340,299.67					
7340 State Property Tax Reduction Allocation	6,270,963.27					
7361 School Safety and Security Grants	5,488.00					
7505 Ready to Learn Block Grant	1,024,042.00					
7820 State Share of Retirement Contributions	28,867,531.61					
7000 Total Revenue from State Sources	\$73,318,164.43					
8000 Revenue from Federal Sources						
8514 NCLB, Title I - Improving the Academic Achievement of the Disadvantaged	707,829.28					

LEA : 122092102 Central Bucks SD

Printed 12/1/2022 8:19:09 AM

	<u>Capital Reserve</u> <u>(1431) (32)</u>	<u>Other Capital</u> <u>Projects Fund (39)</u>	<u>Debt Service (40)</u>	<u>Permanent (90)</u>	<u>Total</u>
6000 Revenue from Local Sources					
6111 Current Real Estate Taxes					225,315,492.44
6112 Interim Real Estate Taxes					1,228,510.26
6113 Public Utility Realty Taxes					252,931.16
6151 Current Act 511 Earned Income Taxes					30,644,182.45
6153 Current Act 511 Real Estate Transfer Taxes					8,297,618.38
6411 Delinquent Real Estate Taxes					2,302,749.11
6413 Delinquent Public Utility Realty Tax					117,825.06
6451 Delinquent Act 511 Earned Income Taxes					1,805,391.93
6500 Earnings on Investments		90,387.78			433,748.01
6700 Revenues from LEA Activities		320,436.64			553,877.92
6832 Federal IDEA Revenue Received as Pass Through					2,546,007.45
6910 Rentals					30,721.92
6941 Regular Day School Tuition					85,253.18
6943 Adult Education Tuition					84,305.67
6944 Receipts from Other LEAs in Pennsylvania - Education					613,379.11
6980 Revenue from Community Services Activities					3,507,181.19
6991 Refunds of a Prior Year Expenditure					58,410.41
6999 Other Revenues Not Specified Above					600.00
6000 Total Revenue from Local Sources		\$410,824.42			\$277,878,185.65
7000 Revenue from State Sources					
7111 Basic Education Funding-Formula					19,233,626.18
7112 Basic Education Funding-Social Security					6,358,176.30
7160 Tuition for Orphans Subsidy					82,416.18
7271 Special Education funds for School-Aged Pupils					7,527,635.58
7311 Pupil Transportation Subsidy					2,144,379.85
7312 Nonpublic and Charter School Pupil Transportation Subsidy					455,070.00
7320 Rental and Sinking Fund Payments / Building Reimbursement Subsidy					1,008,535.79
7330 Health Services (Medical, Dental, Nurse, Act 25)					340,299.67
7340 State Property Tax Reduction Allocation					6,270,963.27
7361 School Safety and Security Grants					5,488.00
7505 Ready to Learn Block Grant					1,024,042.00
7820 State Share of Retirement Contributions					28,867,531.61
7000 Total Revenue from State Sources					\$73,318,164.43
8000 Revenue from Federal Sources					
8514 NCLB, Title I - Improving the Academic Achievement of the Disadvantaged					707,829.28

LEA : 122092102 Central Bucks SD

Printed 12/1/2022 8:19:09 AM

	<u>General Fund (10)</u>	<u>Student Sponsored Activity Fund (21)</u>	<u>Public Purpose Trust (27)</u>	<u>Other Compt Approved (28)</u>	<u>Athletic / Activity (29)</u>	<u>Capital Reserve (690, 1850) (31)</u>
8000 Revenue from Federal Sources						
8515 NCLB, Title II - Preparing, Training and Recruiting High Quality Teachers and Principals	252,469.21					
8516 NCLB, Title III - Language Instruction for Limited English Proficient and Immigrant Students	82,065.85					
8517 NCLB, Title IV - 21st Century Schools	31,354.40					
8742 Governor's Emergency Education Relief Fund (GEER)	3,550.00					
8744 ARP ESSER - Elementary and Secondary School Emergency Relief Fund	1,353,382.32					
8746 ARP IDEA	549,318.11					
8749 Other CARES Act Funding	4,211.00					
8751 ARP ESSER Learning Loss	4,736.15					
8752 ARP ESSER Summer Programs	790.43					
8810 School-Based Access Medicaid Reimbursement Program (SBAP) Reimbursements (Access)	1,859,866.00					
8820 Medical Assistance Reimbursement for Administrative Claiming (Quarterly) Program	93,381.50					
8000 Total Revenue from Federal Sources	\$4,942,954.25					
9000 Other Financing Sources						
9310 General Fund Transfers						
9400 Sale of or Compensation for Loss of Fixed Assets	34,850.00					
9000 Total Other Financing Sources	\$34,850.00					
Total From All Sources	\$355,763,329.91					

LEA : 122092102 Central Bucks SD

Printed 12/1/2022 8:19:09 AM

	<u>Capital Reserve</u> <u>(1431) (32)</u>	<u>Other Capital</u> <u>Projects Fund (39)</u>	<u>Debt Service (40)</u>	<u>Permanent (90)</u>	<u>Total</u>
8000 Revenue from Federal Sources					
8515 NCLB, Title II - Preparing, Training and Recruiting High Quality Teachers and Principals					252,469.21
8516 NCLB, Title III - Language Instruction for Limited English Proficient and Immigrant Students					82,065.85
8517 NCLB, Title IV - 21st Century Schools					31,354.40
8742 Governor's Emergency Education Relief Fund (GEER)					3,550.00
8744 ARP ESSER - Elementary and Secondary School Emergency Relief Fund					1,353,382.32
8746 ARP IDEA					549,318.11
8749 Other CARES Act Funding					4,211.00
8751 ARP ESSER Learning Loss					4,736.15
8752 ARP ESSER Summer Programs					790.43
8810 School-Based Access Medicaid Reimbursement Program (SBAP) Reimbursements (Access)					1,859,866.00
8820 Medical Assistance Reimbursement for Administrative Claiming (Quarterly) Program					93,381.50
8000 Total Revenue from Federal Sources					\$4,942,954.25
9000 Other Financing Sources					
9310 General Fund Transfers		16,581,876.00			16,581,876.00
9400 Sale of or Compensation for Loss of Fixed Assets					34,850.00
9000 Total Other Financing Sources		\$16,581,876.00			\$16,616,726.00
Total From All Sources		\$16,992,700.42			\$372,756,030.33

LEA : 122092102 Central Bucks SD

Printed 12/1/2022 8:19:14 AM

	<u>General Fund (10)</u>	<u>Student Sponsored Activity Fund (21)</u>	<u>Public Purpose Trust (27)</u>	<u>Other Compt Approved (28)</u>	<u>Athletic / Activity (29)</u>	<u>Capital Reserve (690. 1850) (31)</u>
Revenue from Local Sources	277,467,361.23					
Revenue from State Sources	73,318,164.43					
Revenue from Federal Sources	4,942,954.25					
Other Financing Sources	34,850.00					
Total From All Sources	\$355,763,329.91					

LEA : 122092102 Central Bucks SD

Printed 12/1/2022 8:19:14 AM

	<u>Capital Reserve (1431)</u> <u>(32)</u>	<u>Other Capital Projects</u> <u>Fund (39)</u>	<u>Debt Service (40)</u>	<u>Permanent (90)</u>	<u>Total</u>
Revenue from Local Sources		410,824.42			277,878,185.65
Revenue from State Sources					73,318,164.43
Revenue from Federal Sources					4,942,954.25
Other Financing Sources		16,581,876.00			16,616,726.00
Total From All Sources		\$16,992,700.42			\$372,756,030.33

LEA : 122092102 Central Bucks SD

Printed 12/1/2022 8:19:16 AM

General Fund (10)

1000 Instruction		Total
100 <u>Personnel Services – Salaries</u>		
100 Personnel Services – Salaries		122,644,679.28
Total Personnel Services – Salaries		\$122,644,679.28
200 <u>Personnel Services – Employee Benefits</u>		
210 Group Insurance – Contracted Provider		219,641.77
220 Social Security Contributions		9,001,138.70
230 PSERS Retirement Contributions		42,253,594.66
250 Unemployment Compensation		109,769.58
260 Workers' Compensation		217,177.12
270 Group Insurance – Self-Insurance		23,084,130.82
291 Other Retirement Plans		29,475.00
Total Personnel Services – Employee Benefits		\$74,914,927.65
300 <u>Purchased Professional and Technical Services</u>		
322 Professional Educational Services – Ius		2,275,650.44
323 Professional Educational Services – Other Educational Agencies		353,356.02
329 Professional Educational Services – Other		2,063,505.34
330 Other Professional Services		252,581.59
Total Purchased Professional and Technical Services		\$4,945,093.39
400 <u>Purchased Property Services</u>		
430 Repairs and Maintenance Services		191,135.27
440 Rentals		368,358.75
Total Purchased Property Services		\$559,494.02
500 <u>Other Purchased Services</u>		
550 Printing and Binding		400.00
561 Tuition To Other School Districts Within the State		34,724.09
562 Tuition To Pennsylvania Charter Schools		3,375,212.10
563 Tuition To Nonpublic Schools		2,511,074.98
564 Tuition To Career and Technology Centers		5,145,890.48
566 Tuition To Institutions of Higher Education and Technical Institutes		1,172.92
567 Tuition To Approved Private Schools (APS) and PA Chartered Schools for the Deaf and Blind		141,458.31
568 Tuition To Private Residential Rehabilitative Institutions (PRRI) [In-State] and Detention Centers		65,213.04
569 Tuition – Other		569,241.49
580 Travel		40,460.31
594 IU Payment By Withholding for Institutionalized Children's Programs – Special Classes		489.76
Total Other Purchased Services		\$11,885,337.48
600 <u>Supplies</u>		
610 General Supplies		1,594,600.84
620 Energy		166,972.48
640 Books and Periodicals		3,309,130.53
650 Supplies & Fees – Technology Related		622,773.07
Total Supplies		\$5,693,476.92
700 <u>Property</u>		
752 Capital Equipment – Original and Additional		34,535.93

LEA : 122092102 Central Bucks SD

Printed 12/1/2022 8:19:16 AM

General Fund (10)	
1000 Instruction	<u>Total</u>
700 <u>Property</u>	
762 Capitalized Equipment - Replacement	41,187.20
Total Property	\$75,723.13
800 <u>Other Objects</u>	
810 Dues and Fees	5,772.50
Total Other Objects	\$5,772.50
Total 1000 Instruction	\$220,724,504.37

LEA : 122092102 Central Bucks SD

Printed 12/1/2022 8:19:16 AM

General Fund (10)

1100 Regular Programs – Elementary / Secondary

	Elementary	Secondary	Federal	Total
100 <u>Personnel Services – Salaries</u>				
100 Personnel Services – Salaries	47,399,188.07	47,970,819.71	706,984.86	96,076,992.64
Total Personnel Services – Salaries	\$47,399,188.07	\$47,970,819.71	\$706,984.86	\$96,076,992.64
200 <u>Personnel Services – Employee Benefits</u>				
210 Group Insurance – Contracted Provider	107,847.47	111,794.30		219,641.77
220 Social Security Contributions	3,490,279.74	3,547,843.98	53,459.20	7,091,582.92
230 PSERS Retirement Contributions	16,350,321.64	16,640,152.66	131,035.54	33,121,509.84
250 Unemployment Compensation	162,392.72	159,372.88	5,427.64	327,193.24
260 Workers' Compensation	254,592.09	202,906.34	16,635.95	474,134.38
270 Group Insurance – Self-Insurance	9,919,334.60	8,387,753.43	3,713.32	18,310,801.35
291 Other Retirement Plans	14,440.40	15,024.60		29,465.00
Total Personnel Services – Employee Benefits	\$30,299,208.66	\$29,064,848.19	\$210,271.65	\$59,574,328.50
300 <u>Purchased Professional and Technical Services</u>				
329 Professional Educational Services – Other	8,009.46	9,263.00		17,272.46
Total Purchased Professional and Technical Services	\$8,009.46	\$9,263.00		\$17,272.46
400 <u>Purchased Property Services</u>				
430 Repairs and Maintenance Services	118,628.40	72,106.98		190,735.38
440 Rentals	208,701.98	159,656.77		368,358.75
Total Purchased Property Services	\$327,330.38	\$231,763.75		\$559,094.13
500 <u>Other Purchased Services</u>				
550 Printing and Binding		400.00		400.00
562 Tuition To Pennsylvania Charter Schools	769,693.14	1,488,238.87		2,257,932.01
568 Tuition To Private Residential Rehabilitative Institutions (PRRI) [In-State] and Detention Centers	31,954.39	33,258.65		65,213.04
580 Travel	5,518.22	9,950.71		15,468.93
Total Other Purchased Services	\$807,165.75	\$1,531,848.23		\$2,339,013.98
600 <u>Supplies</u>				
610 General Supplies	426,561.73	487,503.24	495,504.24	1,409,569.21
620 Energy	43,206.37	108,680.46		151,886.83
640 Books and Periodicals	3,100,960.11	208,170.42		3,309,130.53
650 Supplies & Fees – Technology Related	346,565.71	108,355.77	130,989.70	585,911.18
Total Supplies	\$3,917,293.92	\$912,709.89	\$626,493.94	\$5,456,497.75
700 <u>Property</u>				
752 Capital Equipment – Original and Additional		34,535.93		34,535.93
762 Capitalized Equipment - Replacement	5,179.68	36,007.52		41,187.20
Total Property	\$5,179.68	\$70,543.45		\$75,723.13
800 <u>Other Objects</u>				
810 Dues and Fees	306.00	4,533.00		4,839.00
Total Other Objects	\$306.00	\$4,533.00		\$4,839.00
Total 1100 Regular Programs – Elementary / Secondary	\$82,763,681.92	\$79,796,329.22	\$1,543,750.45	\$164,103,761.59

LEA : 122092102 Central Bucks SD

Printed 12/1/2022 8:19:16 AM

General Fund (10)

1110 Regular Programs

	Elementary	Secondary	Federal	Total
100 <u>Personnel Services – Salaries</u>				
100 Personnel Services – Salaries	47,399,188.07	47,970,819.71		95,370,007.78
Total Personnel Services – Salaries	\$47,399,188.07	\$47,970,819.71		\$95,370,007.78
200 <u>Personnel Services – Employee Benefits</u>				
210 Group Insurance – Contracted Provider	107,847.47	111,794.30		219,641.77
220 Social Security Contributions	3,490,279.74	3,547,843.98		7,038,123.72
230 PSERS Retirement Contributions	16,350,321.64	16,640,152.66		32,990,474.30
250 Unemployment Compensation	162,392.72	159,372.88		321,765.60
260 Workers' Compensation	254,592.09	202,906.34		457,498.43
270 Group Insurance – Self-Insurance	9,919,334.60	8,387,753.43		18,307,088.03
291 Other Retirement Plans	14,440.40	15,024.60		29,465.00
Total Personnel Services – Employee Benefits	\$30,299,208.66	\$29,064,848.19		\$59,364,056.85
300 <u>Purchased Professional and Technical Services</u>				
329 Professional Educational Services – Other	8,009.46	9,263.00		17,272.46
Total Purchased Professional and Technical Services	\$8,009.46	\$9,263.00		\$17,272.46
400 <u>Purchased Property Services</u>				
430 Repairs and Maintenance Services	118,628.40	72,106.98		190,735.38
440 Rentals	208,701.98	159,656.77		368,358.75
Total Purchased Property Services	\$327,330.38	\$231,763.75		\$559,094.13
500 <u>Other Purchased Services</u>				
550 Printing and Binding		400.00		400.00
562 Tuition To Pennsylvania Charter Schools	769,693.14	1,488,238.87		2,257,932.01
568 Tuition To Private Residential Rehabilitative Institutions (PRRI) [In-State] and Detention Centers	31,954.39	33,258.65		65,213.04
580 Travel	5,518.22	9,950.71		15,468.93
Total Other Purchased Services	\$807,165.75	\$1,531,848.23		\$2,339,013.98
600 <u>Supplies</u>				
610 General Supplies	426,561.73	487,503.24	400,828.62	1,314,893.59
620 Energy	43,206.37	108,680.46		151,886.83
640 Books and Periodicals	3,100,960.11	208,170.42		3,309,130.53
650 Supplies & Fees – Technology Related	346,565.71	108,355.77	130,989.70	585,911.18
Total Supplies	\$3,917,293.92	\$912,709.89	\$531,818.32	\$5,361,822.13
700 <u>Property</u>				
752 Capital Equipment – Original and Additional		34,535.93		34,535.93
762 Capitalized Equipment - Replacement	5,179.68	36,007.52		41,187.20
Total Property	\$5,179.68	\$70,543.45		\$75,723.13
800 <u>Other Objects</u>				
810 Dues and Fees	306.00	4,533.00		4,839.00
Total Other Objects	\$306.00	\$4,533.00		\$4,839.00
Total 1110 Regular Programs	\$82,763,681.92	\$79,796,329.22	\$531,818.32	\$163,091,829.46

LEA : 122092102 Central Bucks SD

Printed 12/1/2022 8:19:16 AM

General Fund (10)

1190 Federally-Funded Regular Programs	<u>Elementary</u>	<u>Secondary</u>	<u>Federal</u>	<u>Total</u>
100 <u>Personnel Services – Salaries</u>				
100 Personnel Services – Salaries			706,984.86	706,984.86
Total Personnel Services – Salaries			\$706,984.86	\$706,984.86
200 <u>Personnel Services – Employee Benefits</u>				
220 Social Security Contributions			53,459.20	53,459.20
230 PSERS Retirement Contributions			131,035.54	131,035.54
250 Unemployment Compensation			5,427.64	5,427.64
260 Workers' Compensation			16,635.95	16,635.95
270 Group Insurance – Self-Insurance			3,713.32	3,713.32
Total Personnel Services – Employee Benefits			\$210,271.65	\$210,271.65
600 <u>Supplies</u>				
610 General Supplies			94,675.62	94,675.62
Total Supplies			\$94,675.62	\$94,675.62
Total 1190 Federally-Funded Regular Programs			\$1,011,932.13	\$1,011,932.13

LEA : 122092102 Central Bucks SD

Printed 12/1/2022 8:19:16 AM

General Fund (10)

1200 Special Programs – Elementary / Secondary

	Elementary	Secondary	Federal	Total
100 <u>Personnel Services – Salaries</u>				
100 Personnel Services – Salaries	12,847,115.30	11,081,399.82	1,448,137.21	25,376,652.33
Total Personnel Services – Salaries	\$12,847,115.30	\$11,081,399.82	\$1,448,137.21	\$25,376,652.33
200 <u>Personnel Services – Employee Benefits</u>				
220 Social Security Contributions	940,883.97	818,974.60	63,132.72	1,822,991.29
230 PSERS Retirement Contributions	4,482,578.60	3,939,990.71	293,458.43	8,716,027.74
250 Unemployment Compensation	(103,728.32)	(134,375.27)	11,357.66	(226,745.93)
260 Workers' Compensation	(108,115.76)	(185,052.78)	24,554.31	(268,614.23)
270 Group Insurance – Self-Insurance	2,329,438.65	1,864,536.82	257,944.86	4,451,920.33
291 Other Retirement Plans	2.75	7.25		10.00
Total Personnel Services – Employee Benefits	\$7,541,059.89	\$6,304,081.33	\$650,447.98	\$14,495,589.20
300 <u>Purchased Professional and Technical Services</u>				
322 Professional Educational Services – Ius	473,137.61	473,137.61	1,329,375.22	2,275,650.44
323 Professional Educational Services – Other Educational Agencies	154,274.03	154,274.03	28,011.00	336,559.06
329 Professional Educational Services – Other	40,987.69	542,640.49	1,401,422.77	1,985,050.95
330 Other Professional Services	252,581.59			252,581.59
Total Purchased Professional and Technical Services	\$920,980.92	\$1,170,052.13	\$2,758,808.99	\$4,849,842.04
400 <u>Purchased Property Services</u>				
430 Repairs and Maintenance Services	399.89			399.89
Total Purchased Property Services	\$399.89			\$399.89
500 <u>Other Purchased Services</u>				
562 Tuition To Pennsylvania Charter Schools	277,265.68	840,014.41		1,117,280.09
563 Tuition To Nonpublic Schools	1,205,457.96	1,305,617.02		2,511,074.98
567 Tuition To Approved Private Schools (APS) and PA Chartered Schools for the Deaf and Blind	72,577.50	68,880.81		141,458.31
580 Travel	24,161.03			24,161.03
594 IU Payment By Withholding for Institutionalized Children's Programs – Special Classes	254.68	235.08		489.76
Total Other Purchased Services	\$1,579,716.85	\$2,214,747.32		\$3,794,464.17
600 <u>Supplies</u>				
610 General Supplies	66,320.18	51,182.83	61,591.99	179,095.00
620 Energy	6,343.64	8,742.01		15,085.65
650 Supplies & Fees – Technology Related			35,961.89	35,961.89
Total Supplies	\$72,663.82	\$59,924.84	\$97,553.88	\$230,142.54
800 <u>Other Objects</u>				
810 Dues and Fees	933.50			933.50
Total Other Objects	\$933.50			\$933.50
Total 1200 Special Programs – Elementary / Secondary	\$22,962,870.17	\$20,830,205.44	\$4,954,948.06	\$48,748,023.67

LEA : 122092102 Central Bucks SD

Printed 12/1/2022 8:19:16 AM

General Fund (10)

1210 Life Skills Support

	<u>Elementary</u>	<u>Secondary</u>	<u>Federal</u>	<u>Total</u>
100 <u>Personnel Services – Salaries</u>				
100 Personnel Services – Salaries	930,467.40	657,126.19		1,587,593.59
Total Personnel Services – Salaries	\$930,467.40	\$657,126.19		\$1,587,593.59
200 <u>Personnel Services – Employee Benefits</u>				
220 Social Security Contributions	64,804.21	45,703.82		110,508.03
230 PSERS Retirement Contributions	321,079.10	227,969.97		549,049.07
250 Unemployment Compensation	7,251.62	5,126.31		12,377.93
260 Workers' Compensation	22,909.59	13,800.40		36,709.99
270 Group Insurance – Self-Insurance	476,477.42	370,170.58		846,648.00
Total Personnel Services – Employee Benefits	\$892,521.94	\$662,771.08		\$1,555,293.02
600 <u>Supplies</u>				
610 General Supplies	660.21	2,345.45		3,005.66
Total Supplies	\$660.21	\$2,345.45		\$3,005.66
Total 1210 Life Skills Support	\$1,823,649.55	\$1,322,242.72		\$3,145,892.27

LEA : 122092102 Central Bucks SD

Printed 12/1/2022 8:19:16 AM

General Fund (10)

1220 Sensory Support	<u>Elementary</u>	<u>Secondary</u>	<u>Federal</u>	<u>Total</u>
100 <u>Personnel Services – Salaries</u>				
100 Personnel Services – Salaries	105,294.53	47,679.80		152,974.33
Total Personnel Services – Salaries	\$105,294.53	\$47,679.80		\$152,974.33
200 <u>Personnel Services – Employee Benefits</u>				
220 Social Security Contributions	7,457.88	3,648.53		11,106.41
230 PSERS Retirement Contributions	36,768.10	16,659.30		53,427.40
250 Unemployment Compensation	822.28	372.07		1,194.35
260 Workers' Compensation	648.00	648.00		1,296.00
270 Group Insurance – Self-Insurance	24,718.62			24,718.62
Total Personnel Services – Employee Benefits	\$70,414.88	\$21,327.90		\$91,742.78
600 <u>Supplies</u>				
610 General Supplies	6,471.33			6,471.33
Total Supplies	\$6,471.33			\$6,471.33
Total 1220 Sensory Support	\$182,180.74	\$69,007.70		\$251,188.44

LEA : 122092102 Central Bucks SD

Printed 12/1/2022 8:19:16 AM

General Fund (10)

1230 Emotional Support

	<u>Elementary</u>	<u>Secondary</u>	<u>Federal</u>	<u>Total</u>
100 <u>Personnel Services – Salaries</u>				
100 Personnel Services – Salaries	1,667,349.11	1,347,775.74		3,015,124.85
Total Personnel Services – Salaries	\$1,667,349.11	\$1,347,775.74		\$3,015,124.85
200 <u>Personnel Services – Employee Benefits</u>				
220 Social Security Contributions	117,229.65	96,652.75		213,882.40
230 PSERS Retirement Contributions	579,911.79	469,658.47		1,049,570.26
250 Unemployment Compensation	13,006.56	10,582.13		23,588.69
260 Workers' Compensation	25,086.74	15,194.93		40,281.67
270 Group Insurance – Self-Insurance	707,432.81	426,323.41		1,133,756.22
291 Other Retirement Plans	2.75	2.25		5.00
Total Personnel Services – Employee Benefits	\$1,442,670.30	\$1,018,413.94		\$2,461,084.24
600 <u>Supplies</u>				
610 General Supplies	4,767.22	3,058.69		7,825.91
Total Supplies	\$4,767.22	\$3,058.69		\$7,825.91
Total 1230 Emotional Support	\$3,114,786.63	\$2,369,248.37		\$5,484,035.00

LEA : 122092102 Central Bucks SD

Printed 12/1/2022 8:19:16 AM

General Fund (10)

1240 Academic Support

	Elementary	Secondary	Federal	Total
100 <u>Personnel Services – Salaries</u>				
100 Personnel Services – Salaries	7,512,252.06	7,481,568.81	1,448,137.21	16,441,958.08
Total Personnel Services – Salaries	\$7,512,252.06	\$7,481,568.81	\$1,448,137.21	\$16,441,958.08
200 <u>Personnel Services – Employee Benefits</u>				
220 Social Security Contributions	566,255.34	564,763.47	63,132.72	1,194,151.53
230 PSERS Retirement Contributions	2,710,301.09	2,717,351.16	293,458.43	5,721,110.68
250 Unemployment Compensation	(145,340.66)	(162,536.48)	11,357.66	(296,519.48)
260 Workers' Compensation	(226,097.54)	(255,445.20)	24,554.31	(456,988.43)
270 Group Insurance – Self-Insurance	861,306.44	861,967.62	257,944.86	1,981,218.92
291 Other Retirement Plans		5.00		5.00
Total Personnel Services – Employee Benefits	\$3,766,424.67	\$3,726,105.57	\$650,447.98	\$8,142,978.22
300 <u>Purchased Professional and Technical Services</u>				
322 Professional Educational Services – Ius	473,137.61	473,137.61	1,329,375.22	2,275,650.44
323 Professional Educational Services – Other Educational Agencies	154,274.03	154,274.03	28,011.00	336,559.06
329 Professional Educational Services – Other	17,782.69	17,782.68	1,401,422.77	1,436,988.14
Total Purchased Professional and Technical Services	\$645,194.33	\$645,194.32	\$2,758,808.99	\$4,049,197.64
500 <u>Other Purchased Services</u>				
563 Tuition To Nonpublic Schools	1,203,612.30	1,303,913.33		2,507,525.63
567 Tuition To Approved Private Schools (APS) and PA Chartered Schools for the Deaf and Blind	11,769.75	12,750.57		24,520.32
580 Travel	4,913.38			4,913.38
Total Other Purchased Services	\$1,220,295.43	\$1,316,663.90		\$2,536,959.33
600 <u>Supplies</u>				
610 General Supplies	40,999.53	33,154.46	61,591.99	135,745.98
620 Energy	1,196.58			1,196.58
650 Supplies & Fees – Technology Related			35,961.89	35,961.89
Total Supplies	\$42,196.11	\$33,154.46	\$97,553.88	\$172,904.45
Total 1240 Academic Support	\$13,186,362.60	\$13,202,687.06	\$4,954,948.06	\$31,343,997.72

LEA : 122092102 Central Bucks SD

Printed 12/1/2022 8:19:16 AM

General Fund (10)

1241 Learning Support – Public	Elementary	Secondary	Federal	Total
100 Personnel Services – Salaries				
100 Personnel Services – Salaries	7,512,252.06	7,481,568.81	1,448,137.21	16,441,958.08
Total Personnel Services – Salaries	\$7,512,252.06	\$7,481,568.81	\$1,448,137.21	\$16,441,958.08
200 Personnel Services – Employee Benefits				
220 Social Security Contributions	566,255.34	564,763.47	63,132.72	1,194,151.53
230 PSERS Retirement Contributions	2,710,301.09	2,717,351.16	293,458.43	5,721,110.68
250 Unemployment Compensation	(145,340.66)	(162,536.48)	11,357.66	(296,519.48)
260 Workers' Compensation	(226,097.54)	(255,445.20)	24,554.31	(456,988.43)
270 Group Insurance – Self-Insurance	861,306.44	861,967.62	257,944.86	1,981,218.92
291 Other Retirement Plans		5.00		5.00
Total Personnel Services – Employee Benefits	\$3,766,424.67	\$3,726,105.57	\$650,447.98	\$8,142,978.22
300 Purchased Professional and Technical Services				
322 Professional Educational Services – Ius	473,137.61	473,137.61	1,329,375.22	2,275,650.44
323 Professional Educational Services – Other Educational Agencies	154,274.03	154,274.03	28,011.00	336,559.06
329 Professional Educational Services – Other	17,782.69	17,782.68	1,401,422.77	1,436,988.14
Total Purchased Professional and Technical Services	\$645,194.33	\$645,194.32	\$2,758,808.99	\$4,049,197.64
500 Other Purchased Services				
563 Tuition To Nonpublic Schools	1,203,612.30	1,303,913.33		2,507,525.63
567 Tuition To Approved Private Schools (APS) and PA Chartered Schools for the Deaf and Blind	11,769.75	12,750.57		24,520.32
Total Other Purchased Services	\$1,215,382.05	\$1,316,663.90		\$2,532,045.95
600 Supplies				
610 General Supplies	27,016.03	33,154.46	61,591.99	121,762.48
650 Supplies & Fees – Technology Related			35,961.89	35,961.89
Total Supplies	\$27,016.03	\$33,154.46	\$97,553.88	\$157,724.37
Total 1241 Learning Support – Public	\$13,166,269.14	\$13,202,687.06	\$4,954,948.06	\$31,323,904.26

LEA : 122092102 Central Bucks SD

Printed 12/1/2022 8:19:16 AM

General Fund (10)

1243 Gifted Support

	<u>Elementary</u>	<u>Secondary</u>	<u>Federal</u>	<u>Total</u>
500 <u>Other Purchased Services</u>				
580 Travel	4,913.38			4,913.38
Total Other Purchased Services	\$4,913.38			\$4,913.38
600 <u>Supplies</u>				
610 General Supplies	13,983.50			13,983.50
620 Energy	1,196.58			1,196.58
Total Supplies	\$15,180.08			\$15,180.08
Total 1243 Gifted Support	\$20,093.46			\$20,093.46

LEA : 122092102 Central Bucks SD

Printed 12/1/2022 8:19:16 AM

General Fund (10)

1270 Multi-Handicapped Support	<u>Elementary</u>	<u>Secondary</u>	<u>Federal</u>	<u>Total</u>
100 <u>Personnel Services – Salaries</u>				
100 Personnel Services – Salaries	176,982.42	49,671.79		226,654.21
Total Personnel Services – Salaries	\$176,982.42	\$49,671.79		\$226,654.21
200 <u>Personnel Services – Employee Benefits</u>				
220 Social Security Contributions	12,306.29	3,549.09		15,855.38
230 PSERS Retirement Contributions	61,837.53	17,355.30		79,192.83
250 Unemployment Compensation	1,381.58	387.51		1,769.09
260 Workers' Compensation	2,272.31	1,257.14		3,529.45
270 Group Insurance – Self-Insurance	84,383.95	30,955.80		115,339.75
Total Personnel Services – Employee Benefits	\$162,181.66	\$53,504.84		\$215,686.50
Total 1270 Multi-Handicapped Support	\$339,164.08	\$103,176.63		\$442,340.71

LEA : 122092102 Central Bucks SD

Printed 12/1/2022 8:19:16 AM

General Fund (10)

1290 Special Programs - Other Support	Elementary	Secondary	Federal	Total
100 <u>Personnel Services – Salaries</u>				
100 Personnel Services – Salaries	2,454,769.78	1,497,577.49		3,952,347.27
Total Personnel Services – Salaries	\$2,454,769.78	\$1,497,577.49		\$3,952,347.27
200 <u>Personnel Services – Employee Benefits</u>				
220 Social Security Contributions	172,830.60	104,656.94		277,487.54
230 PSERS Retirement Contributions	772,680.99	490,996.51		1,263,677.50
250 Unemployment Compensation	19,150.30	11,693.19		30,843.49
260 Workers' Compensation	67,065.14	39,491.95		106,557.09
270 Group Insurance – Self-Insurance	175,119.41	175,119.41		350,238.82
Total Personnel Services – Employee Benefits	\$1,206,846.44	\$821,958.00		\$2,028,804.44
300 <u>Purchased Professional and Technical Services</u>				
329 Professional Educational Services – Other	23,205.00	524,857.81		548,062.81
330 Other Professional Services	252,581.59			252,581.59
Total Purchased Professional and Technical Services	\$275,786.59	\$524,857.81		\$800,644.40
400 <u>Purchased Property Services</u>				
430 Repairs and Maintenance Services	399.89			399.89
Total Purchased Property Services	\$399.89			\$399.89
500 <u>Other Purchased Services</u>				
562 Tuition To Pennsylvania Charter Schools	277,265.68	840,014.41		1,117,280.09
563 Tuition To Nonpublic Schools	1,845.66	1,703.69		3,549.35
567 Tuition To Approved Private Schools (APS) and PA Chartered Schools for the Deaf and Blind	60,807.75	56,130.24		116,937.99
580 Travel	19,247.65			19,247.65
594 IU Payment By Withholding for Institutionalized Children's Programs – Special Classes	254.68	235.08		489.76
Total Other Purchased Services	\$359,421.42	\$898,083.42		\$1,257,504.84
600 <u>Supplies</u>				
610 General Supplies	13,421.89	12,624.23		26,046.12
620 Energy	5,147.06	8,742.01		13,889.07
Total Supplies	\$18,568.95	\$21,366.24		\$39,935.19
800 <u>Other Objects</u>				
810 Dues and Fees	933.50			933.50
Total Other Objects	\$933.50			\$933.50
Total 1290 Special Programs - Other Support	\$4,316,726.57	\$3,763,842.96		\$8,080,569.53

LEA : 122092102 Central Bucks SD

Printed 12/1/2022 8:19:16 AM

General Fund (10)

1300 Vocational Education

500 Other Purchased Services

	<u>Elementary</u>	<u>Secondary</u>	<u>Federal</u>	<u>Total</u>
564 Tuition To Career and Technology Centers		5,145,890.48		5,145,890.48
Total Other Purchased Services		\$5,145,890.48		\$5,145,890.48
Total 1300 Vocational Education		\$5,145,890.48		\$5,145,890.48

LEA : 122092102 Central Bucks SD

Printed 12/1/2022 8:19:16 AM

General Fund (10)

1400 Other Instructional Programs – Elementary / Secondary	<u>Elementary</u>	<u>Secondary</u>	<u>Federal</u>	<u>Total</u>
100 <u>Personnel Services – Salaries</u>				
100 Personnel Services – Salaries	809,992.15	381,042.16		1,191,034.31
Total Personnel Services – Salaries	\$809,992.15	\$381,042.16		\$1,191,034.31
200 <u>Personnel Services – Employee Benefits</u>				
220 Social Security Contributions	58,775.52	27,788.97		86,564.49
230 PSERS Retirement Contributions	282,836.58	133,220.50		416,057.08
250 Unemployment Compensation	6,335.41	2,986.86		9,322.27
260 Workers' Compensation	7,871.96	3,785.01		11,656.97
270 Group Insurance – Self-Insurance	207,316.67	114,092.47		321,409.14
Total Personnel Services – Employee Benefits	\$563,136.14	\$281,873.81		\$845,009.95
300 <u>Purchased Professional and Technical Services</u>				
329 Professional Educational Services – Other		61,181.93		61,181.93
Total Purchased Professional and Technical Services		\$61,181.93		\$61,181.93
500 <u>Other Purchased Services</u>				
561 Tuition To Other School Districts Within the State		34,724.09		34,724.09
566 Tuition To Institutions of Higher Education and Technical Institutes	856.23	316.69		1,172.92
569 Tuition – Other		569,241.49		569,241.49
580 Travel	343.38	486.97		830.35
Total Other Purchased Services	\$1,199.61	\$604,769.24		\$605,968.85
600 <u>Supplies</u>				
610 General Supplies	1,098.45	406.27		1,504.72
650 Supplies & Fees – Technology Related	657.00	243.00		900.00
Total Supplies	\$1,755.45	\$649.27		\$2,404.72
Total 1400 Other Instructional Programs – Elementary / Secondary	\$1,376,083.35	\$1,329,516.41		\$2,705,599.76

LEA : 122092102 Central Bucks SD

Printed 12/1/2022 8:19:16 AM

General Fund (10)

1430 Homebound Instruction	<u>Elementary</u>	<u>Secondary</u>	<u>Federal</u>	<u>Total</u>
100 <u>Personnel Services – Salaries</u>				
100 Personnel Services – Salaries		4,251.50		4,251.50
Total Personnel Services – Salaries		\$4,251.50		\$4,251.50
200 <u>Personnel Services – Employee Benefits</u>				
220 Social Security Contributions		329.93		329.93
230 PSERS Retirement Contributions		1,312.56		1,312.56
250 Unemployment Compensation		34.35		34.35
260 Workers' Compensation		(49.77)		(49.77)
270 Group Insurance – Self-Insurance		401.76		401.76
Total Personnel Services – Employee Benefits		\$2,028.83		\$2,028.83
300 <u>Purchased Professional and Technical Services</u>				
329 Professional Educational Services – Other		61,181.93		61,181.93
Total Purchased Professional and Technical Services		\$61,181.93		\$61,181.93
500 <u>Other Purchased Services</u>				
580 Travel		359.96		359.96
Total Other Purchased Services		\$359.96		\$359.96
Total 1430 Homebound Instruction		\$67,822.22		\$67,822.22

LEA : 122092102 Central Bucks SD

Printed 12/1/2022 8:19:16 AM

General Fund (10)

1440 Alternative Regular Education Programs

Elementary Secondary Federal Total

500 Other Purchased Services

561 Tuition To Other School Districts Within the State		34,724.09		34,724.09
569 Tuition – Other		569,241.49		569,241.49
Total Other Purchased Services		\$603,965.58		\$603,965.58
Total 1440 Alternative Regular Education Programs		\$603,965.58		\$603,965.58

LEA : 122092102 Central Bucks SD

Printed 12/1/2022 8:19:16 AM

General Fund (10)

1441 Adjudicated / Court-Placed Programs

Elementary Secondary Federal Total

500 Other Purchased Services

561 Tuition To Other School Districts Within the State		34,724.09		34,724.09
569 Tuition – Other		569,241.49		569,241.49
Total Other Purchased Services		\$603,965.58		\$603,965.58
Total 1441 Adjudicated / Court-Placed Programs		\$603,965.58		\$603,965.58

LEA : 122092102 Central Bucks SD

Printed 12/1/2022 8:19:16 AM

General Fund (10)

1490 Additional Other Instructional Programs	<u>Elementary</u>	<u>Secondary</u>	<u>Federal</u>	<u>Total</u>
100 <u>Personnel Services – Salaries</u>				
100 Personnel Services – Salaries	809,992.15	376,790.66		1,186,782.81
Total Personnel Services – Salaries	\$809,992.15	\$376,790.66		\$1,186,782.81
200 <u>Personnel Services – Employee Benefits</u>				
220 Social Security Contributions	58,775.52	27,459.04		86,234.56
230 PSERS Retirement Contributions	282,836.58	131,907.94		414,744.52
250 Unemployment Compensation	6,335.41	2,952.51		9,287.92
260 Workers' Compensation	7,871.96	3,834.78		11,706.74
270 Group Insurance – Self-Insurance	207,316.67	113,690.71		321,007.38
Total Personnel Services – Employee Benefits	\$563,136.14	\$279,844.98		\$842,981.12
500 <u>Other Purchased Services</u>				
566 Tuition To Institutions of Higher Education and Technical Institutes	856.23	316.69		1,172.92
580 Travel	343.38	127.01		470.39
Total Other Purchased Services	\$1,199.61	\$443.70		\$1,643.31
600 <u>Supplies</u>				
610 General Supplies	1,098.45	406.27		1,504.72
650 Supplies & Fees – Technology Related	657.00	243.00		900.00
Total Supplies	\$1,755.45	\$649.27		\$2,404.72
Total 1490 Additional Other Instructional Programs	\$1,376,083.35	\$657,728.61		\$2,033,811.96

LEA : 122092102 Central Bucks SD

Printed 12/1/2022 8:19:16 AM

General Fund (10)

1500 Nonpublic School Programs

Elementary Secondary Federal Total

300 Purchased Professional and Technical Services

323 Professional Educational Services – Other Educational Agencies 16,796.96 16,796.96

Total Purchased Professional and Technical Services \$16,796.96 \$16,796.96

600 Supplies

610 General Supplies 4,431.91 4,431.91

Total Supplies \$4,431.91 \$4,431.91

Total 1500 Nonpublic School Programs \$21,228.87 \$21,228.87

LEA : 122092102 Central Bucks SD

Printed 12/1/2022 8:19:22 AM

General Fund (10)

2000 Support Services

Total

100	<u>Personnel Services – Salaries</u>	
100	Personnel Services – Salaries	46,896,303.31
Total Personnel Services – Salaries		\$46,896,303.31
200	<u>Personnel Services – Employee Benefits</u>	
220	Social Security Contributions	3,436,117.70
230	PSERS Retirement Contributions	16,245,753.80
240	Tuition Reimbursement	222,606.26
250	Unemployment Compensation	(57,885.05)
260	Workers' Compensation	472,262.18
270	Group Insurance – Self-Insurance	9,105,137.42
291	Other Retirement Plans	226,602.46
Total Personnel Services – Employee Benefits		\$29,650,594.77
300	<u>Purchased Professional and Technical Services</u>	
310	Official / Administrative Services	947,825.84
329	Professional Educational Services – Other	20,838.50
330	Other Professional Services	1,182,495.77
340	Technical Services	628,554.34
350	Security / Safety Services	57,968.79
360	Employee Training and Development Services	76,761.63
Total Purchased Professional and Technical Services		\$2,914,444.87
400	<u>Purchased Property Services</u>	
410	Cleaning Services	602,410.73
420	Utility Services	279,719.31
430	Repairs and Maintenance Services	2,787,157.50
440	Rentals	(87,377.51)
460	Extermination Services	21,288.00
490	Other Purchased Property Services	493,324.55
Total Purchased Property Services		\$4,096,522.58
500	<u>Other Purchased Services</u>	
511	Student Transportation Services from Another LEA Within the State	234,856.02
513	Contracted Carriers	8,037,734.79
516	Student Transportation Services From the IU	809,275.08
520	Insurance – General	261,252.00
521	Fire Insurance	629,558.00
522	Automotive Liability Insurance	214,687.49
523	General Property and Liability Insurance	92,061.00
529	Other Insurance	102,788.00
530	Communications	794,742.30
549	Other Advertising/Public Relations	20,068.46
550	Printing and Binding	3,977.90
580	Travel	59,242.81
595	IU Payments By Withholding	141,147.28
596	Direct Payments To Intermediate Units	84,379.00
Total Other Purchased Services		\$11,485,770.13

LEA : 122092102 Central Bucks SD

Printed 12/1/2022 8:19:22 AM

General Fund (10)

2000 Support Services

Total

600	<u>Supplies</u>	
610	General Supplies	2,783,242.21
620	Energy	3,455,768.70
630	Food	48,328.43
640	Books and Periodicals	124,944.79
650	Supplies & Fees – Technology Related	854,531.05
Total Supplies		\$7,266,815.18
700	<u>Property</u>	
752	Capital Equipment – Original and Additional	22,914.75
762	Capitalized Equipment - Replacement	100,257.61
Total Property		\$123,172.36
800	<u>Other Objects</u>	
810	Dues and Fees	54,414.99
890	Miscellaneous Expenditures	48.66
Total Other Objects		\$54,463.65
Total 2000 Support Services		\$102,488,086.85

LEA : 122092102 Central Bucks SD

Printed 12/1/2022 8:19:22 AM

General Fund (10)

2100 Support Services – Students	Elementary	Secondary	Federal	Total
100 <u>Personnel Services – Salaries</u>				
100 Personnel Services – Salaries	4,174,824.43	4,326,317.60	19,868.50	8,821,274.35
Total Personnel Services – Salaries	\$4,174,824.43	\$4,326,317.60	\$19,868.50	\$8,821,274.35
200 <u>Personnel Services – Employee Benefits</u>				
220 Social Security Contributions	303,530.42	315,755.65	1,489.82	642,154.27
230 PSERS Retirement Contributions	1,449,059.61	1,502,374.06	6,942.02	3,063,742.65
250 Unemployment Compensation	31,991.74	33,121.65	155.09	67,609.34
260 Workers' Compensation	31,106.38	34,266.82	414.39	71,728.42
270 Group Insurance – Self-Insurance	1,040,577.75	1,196,592.03		2,419,457.96
291 Other Retirement Plans	3,549.61	3,761.42		7,311.03
Total Personnel Services – Employee Benefits	\$2,859,815.51	\$3,085,871.63	\$9,001.32	\$6,272,003.67
300 <u>Purchased Professional and Technical Services</u>				
329 Professional Educational Services – Other		15,455.00		15,455.00
330 Other Professional Services	57,693.29	43,948.98	4,736.25	106,378.52
340 Technical Services		32,495.00		32,495.00
Total Purchased Professional and Technical Services	\$57,693.29	\$91,898.98	\$4,736.25	\$154,328.52
400 <u>Purchased Property Services</u>				
430 Repairs and Maintenance Services	38.38	41.58		79.96
Total Purchased Property Services	\$38.38	\$41.58		\$79.96
500 <u>Other Purchased Services</u>				
580 Travel	177.54	91.46		3,300.75
Total Other Purchased Services	\$177.54	\$91.46		\$3,300.75
600 <u>Supplies</u>				
610 General Supplies	16,551.16	9,793.62		26,344.78
630 Food	380.18	411.87		792.05
640 Books and Periodicals	18,209.40	9,380.60		27,590.00
Total Supplies	\$35,140.74	\$19,586.09		\$54,726.83
800 <u>Other Objects</u>				
810 Dues and Fees	294.15	172.75		796.90
Total Other Objects	\$294.15	\$172.75		\$796.90
Total 2100 Support Services – Students	\$7,127,984.04	\$7,523,980.09	\$33,606.07	\$15,306,510.98

LEA : 122092102 Central Bucks SD

Printed 12/1/2022 8:19:22 AM

General Fund (10)

2110 Supervision of Student Services	<u>Elementary</u>	<u>Secondary</u>	<u>Federal</u>	<u>Total</u>
100 <u>Personnel Services – Salaries</u>				
100 Personnel Services – Salaries	98,709.73	102,738.69		201,448.42
Total Personnel Services – Salaries	\$98,709.73	\$102,738.69		\$201,448.42
200 <u>Personnel Services – Employee Benefits</u>				
220 Social Security Contributions	7,372.74	7,673.67		15,046.41
230 PSERS Retirement Contributions	34,489.18	35,896.91		70,386.09
250 Unemployment Compensation	770.28	801.73		1,572.01
260 Workers' Compensation	368.32	383.36		751.68
270 Group Insurance – Self-Insurance	212,003.65	220,656.85		432,660.50
291 Other Retirement Plans	1,975.18	2,055.79		4,030.97
Total Personnel Services – Employee Benefits	\$256,979.35	\$267,468.31		\$524,447.66
Total 2110 Supervision of Student Services	\$355,689.08	\$370,207.00		\$725,896.08

LEA : 122092102 Central Bucks SD

Printed 12/1/2022 8:19:22 AM

General Fund (10)

2111 Supervision of Student Services – Head of Component	<u>Elementary</u>	<u>Secondary</u>	<u>Federal</u>	<u>Total</u>
100 <u>Personnel Services – Salaries</u>				
100 Personnel Services – Salaries	98,709.73	102,738.69		201,448.42
Total Personnel Services – Salaries	\$98,709.73	\$102,738.69		\$201,448.42
200 <u>Personnel Services – Employee Benefits</u>				
220 Social Security Contributions	7,372.74	7,673.67		15,046.41
230 PSERS Retirement Contributions	34,489.18	35,896.91		70,386.09
250 Unemployment Compensation	770.28	801.73		1,572.01
260 Workers' Compensation	368.32	383.36		751.68
270 Group Insurance – Self-Insurance	212,003.65	220,656.85		432,660.50
291 Other Retirement Plans	1,975.18	2,055.79		4,030.97
Total Personnel Services – Employee Benefits	\$256,979.35	\$267,468.31		\$524,447.66
Total 2111 Supervision of Student Services – Head of Component	\$355,689.08	\$370,207.00		\$725,896.08

LEA : 122092102 Central Bucks SD

Printed 12/1/2022 8:19:22 AM

General Fund (10)

2120 Guidance Services	Elementary	Secondary	Federal	Total
100 <u>Personnel Services – Salaries</u>				
100 Personnel Services – Salaries	1,825,512.63	3,302,800.66		5,128,313.29
Total Personnel Services – Salaries	\$1,825,512.63	\$3,302,800.66		\$5,128,313.29
200 <u>Personnel Services – Employee Benefits</u>				
220 Social Security Contributions	133,416.99	241,019.99		374,436.98
230 PSERS Retirement Contributions	636,161.42	1,149,526.74		1,785,688.16
250 Unemployment Compensation	14,274.13	25,819.05		40,093.18
260 Workers' Compensation	12,627.35	26,448.54		39,075.89
270 Group Insurance – Self-Insurance	328,644.28	766,836.63		1,095,480.91
Total Personnel Services – Employee Benefits	\$1,125,124.17	\$2,209,650.95		\$3,334,775.12
300 <u>Purchased Professional and Technical Services</u>				
329 Professional Educational Services – Other		15,455.00		15,455.00
340 Technical Services		32,495.00		32,495.00
Total Purchased Professional and Technical Services		\$47,950.00		\$47,950.00
600 <u>Supplies</u>				
610 General Supplies	11,609.21	6,818.10		18,427.31
Total Supplies	\$11,609.21	\$6,818.10		\$18,427.31
800 <u>Other Objects</u>				
810 Dues and Fees	294.15	172.75		466.90
Total Other Objects	\$294.15	\$172.75		\$466.90
Total 2120 Guidance Services	\$2,962,540.16	\$5,567,392.46		\$8,529,932.62

LEA : 122092102 Central Bucks SD

Printed 12/1/2022 8:19:22 AM

General Fund (10)

2130 Attendance Services

Elementary Secondary Federal Total

100 <u>Personnel Services – Salaries</u>				
100 Personnel Services – Salaries				300,263.82
Total Personnel Services – Salaries				\$300,263.82
200 <u>Personnel Services – Employee Benefits</u>				
220 Social Security Contributions				21,378.38
230 PSERS Retirement Contributions				105,366.96
250 Unemployment Compensation				2,340.86
260 Workers' Compensation				5,940.83
270 Group Insurance – Self-Insurance				182,288.18
Total Personnel Services – Employee Benefits				\$317,315.21
Total 2130 Attendance Services				\$617,579.03

LEA : 122092102 Central Bucks SD

Printed 12/1/2022 8:19:22 AM

General Fund (10)

2140 Psychological Services	Elementary	Secondary	Federal	Total
100 <u>Personnel Services – Salaries</u>				
100 Personnel Services – Salaries	981,409.82	427,442.13		1,408,851.95
Total Personnel Services – Salaries	\$981,409.82	\$427,442.13		\$1,408,851.95
200 <u>Personnel Services – Employee Benefits</u>				
220 Social Security Contributions	71,511.11	31,225.60		102,736.71
230 PSERS Retirement Contributions	339,335.91	149,260.70		488,596.61
250 Unemployment Compensation	7,674.53	3,338.19		11,012.72
260 Workers' Compensation	7,083.45	2,968.48		10,051.93
270 Group Insurance – Self-Insurance	210,635.52	95,735.28		306,370.80
Total Personnel Services – Employee Benefits	\$636,240.52	\$282,528.25		\$918,768.77
300 <u>Purchased Professional and Technical Services</u>				
330 Other Professional Services	17,125.00			17,125.00
Total Purchased Professional and Technical Services	\$17,125.00			\$17,125.00
500 <u>Other Purchased Services</u>				
580 Travel	177.54	91.46		269.00
Total Other Purchased Services	\$177.54	\$91.46		\$269.00
600 <u>Supplies</u>				
610 General Supplies	4,185.74	2,156.29		6,342.03
640 Books and Periodicals	18,209.40	9,380.60		27,590.00
Total Supplies	\$22,395.14	\$11,536.89		\$33,932.03
Total 2140 Psychological Services	\$1,657,348.02	\$721,598.73		\$2,378,946.75

LEA : 122092102 Central Bucks SD

Printed 12/1/2022 8:19:22 AM

General Fund (10)

2150 Speech Pathology and Audiology Services	<u>Elementary</u>	<u>Secondary</u>	<u>Federal</u>	<u>Total</u>
100 <u>Personnel Services – Salaries</u>				
100 Personnel Services – Salaries	1,136,198.85	349,259.94	19,868.50	1,505,327.29
Total Personnel Services – Salaries	\$1,136,198.85	\$349,259.94	\$19,868.50	\$1,505,327.29
200 <u>Personnel Services – Employee Benefits</u>				
220 Social Security Contributions	81,563.18	25,364.46	1,489.82	108,417.46
230 PSERS Retirement Contributions	396,725.41	121,813.05	6,942.02	525,480.48
250 Unemployment Compensation	8,871.88	2,728.34	155.09	11,755.31
260 Workers' Compensation	9,655.47	2,980.34	414.39	13,050.20
270 Group Insurance – Self-Insurance	266,305.17	88,458.38		354,763.55
Total Personnel Services – Employee Benefits	\$763,121.11	\$241,344.57	\$9,001.32	\$1,013,467.00
Total 2150 Speech Pathology and Audiology Services	\$1,899,319.96	\$590,604.51	\$28,869.82	\$2,518,794.29

LEA : 122092102 Central Bucks SD

Printed 12/1/2022 8:19:22 AM

General Fund (10)

2160 Social Work Services	<u>Elementary</u>	<u>Secondary</u>	<u>Federal</u>	<u>Total</u>
500 <u>Other Purchased Services</u>				
580 Travel				3,031.75
Total Other Purchased Services				\$3,031.75
800 <u>Other Objects</u>				
810 Dues and Fees				330.00
Total Other Objects				\$330.00
Total 2160 Social Work Services				\$3,361.75

LEA : 122092102 Central Bucks SD

Printed 12/1/2022 8:19:22 AM

General Fund (10)

2190 Other Student Services	Elementary	Secondary	Federal	Total
100 <u>Personnel Services – Salaries</u>				
100 Personnel Services – Salaries	132,993.40	144,076.18		277,069.58
Total Personnel Services – Salaries	\$132,993.40	\$144,076.18		\$277,069.58
200 <u>Personnel Services – Employee Benefits</u>				
220 Social Security Contributions	9,666.40	10,471.93		20,138.33
230 PSERS Retirement Contributions	42,347.69	45,876.66		88,224.35
250 Unemployment Compensation	400.92	434.34		835.26
260 Workers' Compensation	1,371.79	1,486.10		2,857.89
270 Group Insurance – Self-Insurance	22,989.13	24,904.89		47,894.02
291 Other Retirement Plans	1,574.43	1,705.63		3,280.06
Total Personnel Services – Employee Benefits	\$78,350.36	\$84,879.55		\$163,229.91
300 <u>Purchased Professional and Technical Services</u>				
330 Other Professional Services	40,568.29	43,948.98	4,736.25	89,253.52
Total Purchased Professional and Technical Services	\$40,568.29	\$43,948.98	\$4,736.25	\$89,253.52
400 <u>Purchased Property Services</u>				
430 Repairs and Maintenance Services	38.38	41.58		79.96
Total Purchased Property Services	\$38.38	\$41.58		\$79.96
600 <u>Supplies</u>				
610 General Supplies	756.21	819.23		1,575.44
630 Food	380.18	411.87		792.05
Total Supplies	\$1,136.39	\$1,231.10		\$2,367.49
Total 2190 Other Student Services	\$253,086.82	\$274,177.39	\$4,736.25	\$532,000.46

LEA : 122092102 Central Bucks SD

Printed 12/1/2022 8:19:22 AM

General Fund (10)

2200 Support Services – Instructional Staff

	Elementary	Secondary	Federal	Total
100 <u>Personnel Services – Salaries</u>				
100 Personnel Services – Salaries	4,280,672.38	3,346,409.97		7,627,082.35
Total Personnel Services – Salaries	\$4,280,672.38	\$3,346,409.97		\$7,627,082.35
200 <u>Personnel Services – Employee Benefits</u>				
220 Social Security Contributions	314,134.69	246,274.30		560,408.99
230 PSERS Retirement Contributions	1,475,132.67	1,154,972.04		2,630,104.71
240 Tuition Reimbursement	102,543.41	106,728.85		209,272.26
250 Unemployment Compensation	33,476.97	26,162.43		59,639.40
260 Workers' Compensation	37,450.58	26,085.00		63,535.58
270 Group Insurance – Self-Insurance	1,051,788.68	891,827.98		1,943,616.66
291 Other Retirement Plans	17,504.71	18,441.81		35,946.52
Total Personnel Services – Employee Benefits	\$3,032,031.71	\$2,470,492.41		\$5,502,524.12
300 <u>Purchased Professional and Technical Services</u>				
329 Professional Educational Services – Other	2,249.99	1,653.85	1,479.66	5,383.50
330 Other Professional Services		400.00		400.00
340 Technical Services	3,892.45	4,051.33		7,943.78
360 Employee Training and Development Services	50,863.92	17,350.21	4,840.00	73,054.13
Total Purchased Professional and Technical Services	\$57,006.36	\$23,455.39	\$6,319.66	\$86,781.41
400 <u>Purchased Property Services</u>				
430 Repairs and Maintenance Services	24,533.97	27,857.07		52,391.04
Total Purchased Property Services	\$24,533.97	\$27,857.07		\$52,391.04
500 <u>Other Purchased Services</u>				
530 Communications	34,861.94	36,284.88		71,146.82
580 Travel	12,418.78	12,658.46	571.44	25,648.68
Total Other Purchased Services	\$47,280.72	\$48,943.34	\$571.44	\$96,795.50
600 <u>Supplies</u>				
610 General Supplies	25,885.38	94,421.19		120,306.57
630 Food	920.77	929.26		1,850.03
640 Books and Periodicals	34,537.04	58,489.64		93,026.68
650 Supplies & Fees – Technology Related	138,654.31	400,007.57		538,661.88
Total Supplies	\$199,997.50	\$553,847.66		\$753,845.16
700 <u>Property</u>				
752 Capital Equipment – Original and Additional	(1,000.00)			(1,000.00)
Total Property	(\$1,000.00)			(\$1,000.00)
800 <u>Other Objects</u>				
810 Dues and Fees	81.83	150.17		232.00
Total Other Objects	\$81.83	\$150.17		\$232.00
Total 2200 Support Services – Instructional Staff	\$7,640,604.47	\$6,471,156.01	\$6,891.10	\$14,118,651.58

LEA : 122092102 Central Bucks SD

Printed 12/1/2022 8:19:22 AM

General Fund (10)

2220 Technology Support Services	Elementary	Secondary	Federal	Total
100 Personnel Services – Salaries				
100 Personnel Services – Salaries	63,202.14	81,268.99		144,471.13
Total Personnel Services – Salaries	\$63,202.14	\$81,268.99		\$144,471.13
200 Personnel Services – Employee Benefits				
220 Social Security Contributions	4,479.66	5,806.09		10,285.75
230 PSERS Retirement Contributions	22,082.87	28,395.42		50,478.29
250 Unemployment Compensation	493.78	634.77		1,128.55
260 Workers' Compensation	298.60	391.02		689.62
270 Group Insurance – Self-Insurance	185,734.21	193,315.18		379,049.39
291 Other Retirement Plans	1,265.64	1,371.12		2,636.76
Total Personnel Services – Employee Benefits	\$214,354.76	\$229,913.60		\$444,268.36
600 Supplies				
610 General Supplies	5,506.88	4,934.55		10,441.43
Total Supplies	\$5,506.88	\$4,934.55		\$10,441.43
Total 2220 Technology Support Services	\$283,063.78	\$316,117.14		\$599,180.92

LEA : 122092102 Central Bucks SD

Printed 12/1/2022 8:19:22 AM

General Fund (10)

2240 Computer-Assisted Instruction Support Services	Elementary	Secondary	Federal	Total
100 <u>Personnel Services – Salaries</u>				
100 Personnel Services – Salaries	791,624.11	827,233.82		1,618,857.93
Total Personnel Services – Salaries	\$791,624.11	\$827,233.82		\$1,618,857.93
200 <u>Personnel Services – Employee Benefits</u>				
220 Social Security Contributions	58,441.13	61,078.82		119,519.95
230 PSERS Retirement Contributions	274,929.33	286,150.94		561,080.27
250 Unemployment Compensation	6,182.91	6,460.99		12,643.90
260 Workers' Compensation	8,866.02	9,357.50		18,223.52
270 Group Insurance – Self-Insurance	207,444.66	215,911.79		423,356.45
291 Other Retirement Plans	2,555.15	2,659.45		5,214.60
Total Personnel Services – Employee Benefits	\$558,419.20	\$581,619.49		\$1,140,038.69
300 <u>Purchased Professional and Technical Services</u>				
340 Technical Services	3,892.45	4,051.33		7,943.78
Total Purchased Professional and Technical Services	\$3,892.45	\$4,051.33		\$7,943.78
400 <u>Purchased Property Services</u>				
430 Repairs and Maintenance Services	23,991.91	27,292.88		51,284.79
Total Purchased Property Services	\$23,991.91	\$27,292.88		\$51,284.79
500 <u>Other Purchased Services</u>				
530 Communications	34,861.94	36,284.88		71,146.82
580 Travel	9,381.27	9,764.17		19,145.44
Total Other Purchased Services	\$44,243.21	\$46,049.05		\$90,292.26
600 <u>Supplies</u>				
610 General Supplies	4,261.83	57,633.30		61,895.13
640 Books and Periodicals		575.30		575.30
650 Supplies & Fees – Technology Related	128,947.31	373,658.79		502,606.10
Total Supplies	\$133,209.14	\$431,867.39		\$565,076.53
700 <u>Property</u>				
752 Capital Equipment – Original and Additional	(1,000.00)			(1,000.00)
Total Property	(\$1,000.00)			(\$1,000.00)
Total 2240 Computer-Assisted Instruction Support Services	\$1,554,380.02	\$1,918,113.96		\$3,472,493.98

LEA : 122092102 Central Bucks SD

Printed 12/1/2022 8:19:22 AM

General Fund (10)

2250 School Library Services	Elementary	Secondary	Federal	Total
100 Personnel Services – Salaries				
100 Personnel Services – Salaries	1,858,134.81	775,835.63		2,633,970.44
Total Personnel Services – Salaries	\$1,858,134.81	\$775,835.63		\$2,633,970.44
200 Personnel Services – Employee Benefits				
220 Social Security Contributions	135,813.53	57,074.85		192,888.38
230 PSERS Retirement Contributions	640,461.75	269,896.63		910,358.38
250 Unemployment Compensation	14,549.16	6,070.84		20,620.00
260 Workers' Compensation	17,845.58	5,793.84		23,639.42
270 Group Insurance – Self-Insurance	357,236.73	157,889.10		515,125.83
Total Personnel Services – Employee Benefits	\$1,165,906.75	\$496,725.26		\$1,662,632.01
600 Supplies				
610 General Supplies	8,571.69	30,234.89		38,806.58
640 Books and Periodicals	32,084.39	55,361.59		87,445.98
650 Supplies & Fees – Technology Related		18,744.78		18,744.78
Total Supplies	\$40,656.08	\$104,341.26		\$144,997.34
800 Other Objects				
810 Dues and Fees		65.00		65.00
Total Other Objects		\$65.00		\$65.00
Total 2250 School Library Services	\$3,064,697.64	\$1,376,967.15		\$4,441,664.79

LEA : 122092102 Central Bucks SD

Printed 12/1/2022 8:19:22 AM

General Fund (10)

2260 Instruction and Curriculum Development Services	<u>Elementary</u>	<u>Secondary</u>	<u>Federal</u>	<u>Total</u>
100 <u>Personnel Services – Salaries</u>				
100 Personnel Services – Salaries	607,441.52	662,766.89		1,270,208.41
Total Personnel Services – Salaries	\$607,441.52	\$662,766.89		\$1,270,208.41
200 <u>Personnel Services – Employee Benefits</u>				
220 Social Security Contributions	44,363.42	48,389.61		92,753.03
230 PSERS Retirement Contributions	211,005.18	230,598.56		441,603.74
250 Unemployment Compensation	4,745.28	5,183.61		9,928.89
260 Workers' Compensation	4,622.83	4,487.63		9,110.46
270 Group Insurance – Self-Insurance	141,998.27	154,645.62		296,643.89
291 Other Retirement Plans	3,970.41	4,301.27		8,271.68
Total Personnel Services – Employee Benefits	\$410,705.39	\$447,606.30		\$858,311.69
300 <u>Purchased Professional and Technical Services</u>				
329 Professional Educational Services – Other		1,653.85		1,653.85
Total Purchased Professional and Technical Services		\$1,653.85		\$1,653.85
500 <u>Other Purchased Services</u>				
580 Travel	1,846.85	414.99		2,261.84
Total Other Purchased Services	\$1,846.85	\$414.99		\$2,261.84
600 <u>Supplies</u>				
610 General Supplies	5,990.00			5,990.00
630 Food	27.96			27.96
650 Supplies & Fees – Technology Related	9,707.00	7,604.00		17,311.00
Total Supplies	\$15,724.96	\$7,604.00		\$23,328.96
Total 2260 Instruction and Curriculum Development Services	\$1,035,718.72	\$1,120,046.03		\$2,155,764.75

LEA : 122092102 Central Bucks SD

Printed 12/1/2022 8:19:22 AM

General Fund (10)

2270 Instructional Staff Professional Development Services	Elementary	Secondary	Federal	Total
100 <u>Personnel Services – Salaries</u>				
100 Personnel Services – Salaries	387,377.70	403,029.18		790,406.88
Total Personnel Services – Salaries	\$387,377.70	\$403,029.18		\$790,406.88
200 <u>Personnel Services – Employee Benefits</u>				
220 Social Security Contributions	28,644.54	29,802.22		58,446.76
230 PSERS Retirement Contributions	134,891.59	140,341.52		275,233.11
240 Tuition Reimbursement	102,543.41	106,728.85		209,272.26
250 Unemployment Compensation	3,022.58	3,145.96		6,168.54
260 Workers' Compensation	2,320.34	2,415.05		4,735.39
270 Group Insurance – Self-Insurance	60,910.85	63,397.01		124,307.86
Total Personnel Services – Employee Benefits	\$332,333.31	\$345,830.61		\$678,163.92
300 <u>Purchased Professional and Technical Services</u>				
329 Professional Educational Services – Other	2,249.99		1,479.66	3,729.65
330 Other Professional Services		400.00		400.00
360 Employee Training and Development Services	50,863.92	17,350.21	4,840.00	73,054.13
Total Purchased Professional and Technical Services	\$53,113.91	\$17,750.21	\$6,319.66	\$77,183.78
400 <u>Purchased Property Services</u>				
430 Repairs and Maintenance Services	542.06	564.19		1,106.25
Total Purchased Property Services	\$542.06	\$564.19		\$1,106.25
500 <u>Other Purchased Services</u>				
580 Travel	1,190.66	2,479.30	571.44	4,241.40
Total Other Purchased Services	\$1,190.66	\$2,479.30	\$571.44	\$4,241.40
600 <u>Supplies</u>				
610 General Supplies	1,554.98	1,618.45		3,173.43
630 Food	892.81	929.26		1,822.07
640 Books and Periodicals	2,452.65	2,552.75		5,005.40
Total Supplies	\$4,900.44	\$5,100.46		\$10,000.90
800 <u>Other Objects</u>				
810 Dues and Fees	81.83	85.17		167.00
Total Other Objects	\$81.83	\$85.17		\$167.00
Total 2270 Instructional Staff Professional Development Services	\$779,539.91	\$774,839.12	\$6,891.10	\$1,561,270.13

LEA : 122092102 Central Bucks SD

Printed 12/1/2022 8:19:22 AM

General Fund (10)

2290 Other Instructional Staff Services	<u>Elementary</u>	<u>Secondary</u>	<u>Federal</u>	<u>Total</u>
100 <u>Personnel Services – Salaries</u>				
100 Personnel Services – Salaries	572,892.10	596,275.46		1,169,167.56
Total Personnel Services – Salaries	\$572,892.10	\$596,275.46		\$1,169,167.56
200 <u>Personnel Services – Employee Benefits</u>				
220 Social Security Contributions	42,392.41	44,122.71		86,515.12
230 PSERS Retirement Contributions	191,761.95	199,588.97		391,350.92
250 Unemployment Compensation	4,483.26	4,666.26		9,149.52
260 Workers' Compensation	3,497.21	3,639.96		7,137.17
270 Group Insurance – Self-Insurance	98,463.96	106,669.28		205,133.24
291 Other Retirement Plans	9,713.51	10,109.97		19,823.48
Total Personnel Services – Employee Benefits	\$350,312.30	\$368,797.15		\$719,109.45
Total 2290 Other Instructional Staff Services	\$923,204.40	\$965,072.61		\$1,888,277.01

LEA : 122092102 Central Bucks SD

Printed 12/1/2022 8:19:22 AM

General Fund (10)

2300 Support Services – Administration	Elementary	Secondary	Federal	Total
100 <u>Personnel Services – Salaries</u>				
100 Personnel Services – Salaries	3,777,314.45	4,148,850.79		8,989,923.12
Total Personnel Services – Salaries	\$3,777,314.45	\$4,148,850.79		\$8,989,923.12
200 <u>Personnel Services – Employee Benefits</u>				
220 Social Security Contributions	273,459.12	295,447.56		641,265.93
230 PSERS Retirement Contributions	1,318,434.13	1,464,752.72		3,096,158.61
250 Unemployment Compensation	29,598.84	32,133.75		68,739.33
260 Workers' Compensation	24,820.71	24,805.72		54,558.28
270 Group Insurance – Self-Insurance	962,681.24	983,731.47		2,054,255.21
291 Other Retirement Plans	56,815.72	67,140.43		141,689.95
Total Personnel Services – Employee Benefits	\$2,665,809.76	\$2,868,011.65		\$6,056,667.31
300 <u>Purchased Professional and Technical Services</u>				
310 Official / Administrative Services				947,825.84
330 Other Professional Services		3,069.12		621,481.37
340 Technical Services				38,540.52
Total Purchased Professional and Technical Services		\$3,069.12		\$1,607,847.73
400 <u>Purchased Property Services</u>				
430 Repairs and Maintenance Services				4,431.29
440 Rentals				9,119.19
Total Purchased Property Services				\$13,550.48
500 <u>Other Purchased Services</u>				
520 Insurance – General				261,252.00
530 Communications	1,624.13	14,417.10		41,190.74
549 Other Advertising/Public Relations				3,496.24
550 Printing and Binding				3,977.90
580 Travel	924.27	5,785.47		16,192.68
Total Other Purchased Services	\$2,548.40	\$20,202.57		\$326,109.56
600 <u>Supplies</u>				
610 General Supplies	27,620.06	248,098.59		313,820.83
630 Food	2,464.13	9,935.16		37,603.38
640 Books and Periodicals		541.93		2,072.50
Total Supplies	\$30,084.19	\$258,575.68		\$353,496.71
700 <u>Property</u>				
762 Capitalized Equipment - Replacement		7,740.00		15,951.70
Total Property		\$7,740.00		\$15,951.70
800 <u>Other Objects</u>				
810 Dues and Fees	8,803.11	9,275.08		39,046.22
Total Other Objects	\$8,803.11	\$9,275.08		\$39,046.22
Total 2300 Support Services – Administration	\$6,484,559.91	\$7,315,724.89		\$17,402,592.83

LEA : 122092102 Central Bucks SD

Printed 12/1/2022 8:19:22 AM

General Fund (10)				
2310 Board Services	<u>Elementary</u>	<u>Secondary</u>	<u>Federal</u>	<u>Total</u>
500 <u>Other Purchased Services</u>				
520 Insurance – General				261,252.00
549 Other Advertising/Public Relations				2,062.08
Total Other Purchased Services				\$263,314.08
800 <u>Other Objects</u>				
810 Dues and Fees				16,604.57
Total Other Objects				\$16,604.57
Total 2310 Board Services				\$279,918.65

LEA : 122092102 Central Bucks SD

Printed 12/1/2022 8:19:22 AM

General Fund (10)

2330 Tax Assessment and Collection Services	<u>Elementary</u>	<u>Secondary</u>	<u>Federal</u>	<u>Total</u>
100 <u>Personnel Services – Salaries</u>				
100 Personnel Services – Salaries				169,325.95
Total Personnel Services – Salaries				\$169,325.95
200 <u>Personnel Services – Employee Benefits</u>				
220 Social Security Contributions				12,953.44
Total Personnel Services – Employee Benefits				\$12,953.44
300 <u>Purchased Professional and Technical Services</u>				
310 Official / Administrative Services				946,025.84
Total Purchased Professional and Technical Services				\$946,025.84
500 <u>Other Purchased Services</u>				
530 Communications				7,939.82
550 Printing and Binding				3,543.80
Total Other Purchased Services				\$11,483.62
600 <u>Supplies</u>				
610 General Supplies				3,598.05
Total Supplies				\$3,598.05
Total 2330 Tax Assessment and Collection Services				\$1,143,386.90

LEA : 122092102 Central Bucks SD

Printed 12/1/2022 8:19:22 AM

General Fund (10)

2340 Staff Relations and Negotiations Services	<u>Elementary</u>	<u>Secondary</u>	<u>Federal</u>	<u>Total</u>
300 <u>Purchased Professional and Technical Services</u>				
330 Other Professional Services				246,531.66
Total Purchased Professional and Technical Services				\$246,531.66
400 <u>Purchased Property Services</u>				
430 Repairs and Maintenance Services				696.00
Total Purchased Property Services				\$696.00
500 <u>Other Purchased Services</u>				
549 Other Advertising/Public Relations				1,238.80
Total Other Purchased Services				\$1,238.80
Total 2340 Staff Relations and Negotiations Services				\$248,466.46

LEA : 122092102 Central Bucks SD

Printed 12/1/2022 8:19:22 AM

General Fund (10)

2350 Legal and Accounting Services	<u>Elementary</u>	<u>Secondary</u>	<u>Federal</u>	<u>Total</u>
300 <u>Purchased Professional and Technical Services</u>				
330 Other Professional Services				298,262.84
Total Purchased Professional and Technical Services				\$298,262.84
Total 2350 Legal and Accounting Services				\$298,262.84

LEA : 122092102 Central Bucks SD

Printed 12/1/2022 8:19:22 AM

General Fund (10)

2360 Office of the Superintendent / Executive Director Services	<u>Elementary</u>	<u>Secondary</u>	<u>Federal</u>	<u>Total</u>
100 <u>Personnel Services – Salaries</u>				
100 Personnel Services – Salaries				764,593.39
Total Personnel Services – Salaries				\$764,593.39
200 <u>Personnel Services – Employee Benefits</u>				
220 Social Security Contributions				49,720.90
230 PSERS Retirement Contributions				267,737.33
250 Unemployment Compensation				5,991.49
260 Workers' Compensation				3,551.04
270 Group Insurance – Self-Insurance				81,731.18
291 Other Retirement Plans				15,456.10
Total Personnel Services – Employee Benefits				\$424,188.04
300 <u>Purchased Professional and Technical Services</u>				
330 Other Professional Services				15,970.00
Total Purchased Professional and Technical Services				\$15,970.00
500 <u>Other Purchased Services</u>				
530 Communications	25.00	25.00		50.00
580 Travel				3,403.76
Total Other Purchased Services	\$25.00	\$25.00		\$3,453.76
600 <u>Supplies</u>				
610 General Supplies				5,710.66
630 Food				22,395.65
640 Books and Periodicals				787.97
Total Supplies				\$28,894.28
700 <u>Property</u>				
762 Capitalized Equipment - Replacement				8,211.70
Total Property				\$8,211.70
800 <u>Other Objects</u>				
810 Dues and Fees				2,260.00
Total Other Objects				\$2,260.00
Total 2360 Office of the Superintendent / Executive Director Services	\$25.00	\$25.00		\$1,247,571.17

LEA : 122092102 Central Bucks SD

Printed 12/1/2022 8:19:22 AM

General Fund (10)

2370 Community Relations Services	Elementary	Secondary	Federal	Total
100 <u>Personnel Services – Salaries</u>				
100 Personnel Services – Salaries				113,646.00
Total Personnel Services – Salaries				\$113,646.00
200 <u>Personnel Services – Employee Benefits</u>				
220 Social Security Contributions				8,446.14
230 PSERS Retirement Contributions				39,707.99
250 Unemployment Compensation				888.95
260 Workers' Compensation				622.08
270 Group Insurance – Self-Insurance				26,111.32
291 Other Retirement Plans				2,277.70
Total Personnel Services – Employee Benefits				\$78,054.18
300 <u>Purchased Professional and Technical Services</u>				
330 Other Professional Services				11,749.00
340 Technical Services				38,540.52
Total Purchased Professional and Technical Services				\$50,289.52
400 <u>Purchased Property Services</u>				
430 Repairs and Maintenance Services				2,896.57
Total Purchased Property Services				\$2,896.57
500 <u>Other Purchased Services</u>				
550 Printing and Binding				434.10
580 Travel				4,525.41
Total Other Purchased Services				\$4,959.51
600 <u>Supplies</u>				
610 General Supplies				19,056.12
Total Supplies				\$19,056.12
800 <u>Other Objects</u>				
810 Dues and Fees				873.46
Total Other Objects				\$873.46
Total 2370 Community Relations Services				\$269,775.36

LEA : 122092102 Central Bucks SD

Printed 12/1/2022 8:19:22 AM

General Fund (10)

2380 Office of the Principal Services	Elementary	Secondary	Federal	Total
100 <u>Personnel Services – Salaries</u>				
100 Personnel Services – Salaries	3,777,314.45	4,148,850.79		7,926,165.24
Total Personnel Services – Salaries	\$3,777,314.45	\$4,148,850.79		\$7,926,165.24
200 <u>Personnel Services – Employee Benefits</u>				
220 Social Security Contributions	273,459.12	295,447.56		568,906.68
230 PSERS Retirement Contributions	1,318,434.13	1,464,752.72		2,783,186.85
250 Unemployment Compensation	29,598.84	32,133.75		61,732.59
260 Workers' Compensation	24,820.71	24,805.72		49,626.43
270 Group Insurance – Self-Insurance	962,681.24	983,731.47		1,946,412.71
291 Other Retirement Plans	56,815.72	67,140.43		123,956.15
Total Personnel Services – Employee Benefits	\$2,665,809.76	\$2,868,011.65		\$5,533,821.41
300 <u>Purchased Professional and Technical Services</u>				
330 Other Professional Services		3,069.12		3,069.12
Total Purchased Professional and Technical Services		\$3,069.12		\$3,069.12
500 <u>Other Purchased Services</u>				
530 Communications	1,599.13	14,392.10		15,991.23
580 Travel	924.27	5,785.47		6,709.74
Total Other Purchased Services	\$2,523.40	\$20,177.57		\$22,700.97
600 <u>Supplies</u>				
610 General Supplies	27,620.06	248,098.59		275,718.65
630 Food	2,464.13	9,935.16		12,399.29
640 Books and Periodicals		541.93		541.93
Total Supplies	\$30,084.19	\$258,575.68		\$288,659.87
700 <u>Property</u>				
762 Capitalized Equipment - Replacement		7,740.00		7,740.00
Total Property		\$7,740.00		\$7,740.00
800 <u>Other Objects</u>				
810 Dues and Fees	8,803.11	9,275.08		18,078.19
Total Other Objects	\$8,803.11	\$9,275.08		\$18,078.19
Total 2380 Office of the Principal Services	\$6,484,534.91	\$7,315,699.89		\$13,800,234.80

LEA : 122092102 Central Bucks SD

Printed 12/1/2022 8:19:22 AM

General Fund (10)				
2390 Other Administration Services	<u>Elementary</u>	<u>Secondary</u>	<u>Federal</u>	<u>Total</u>
100 <u>Personnel Services – Salaries</u>				
100 Personnel Services – Salaries				16,192.54
Total Personnel Services – Salaries				\$16,192.54
200 <u>Personnel Services – Employee Benefits</u>				
220 Social Security Contributions				1,238.77
230 PSERS Retirement Contributions				5,526.44
250 Unemployment Compensation				126.30
260 Workers' Compensation				758.73
Total Personnel Services – Employee Benefits				\$7,650.24
300 <u>Purchased Professional and Technical Services</u>				
310 Official / Administrative Services				1,800.00
330 Other Professional Services				45,898.75
Total Purchased Professional and Technical Services				\$47,698.75
400 <u>Purchased Property Services</u>				
430 Repairs and Maintenance Services				838.72
440 Rentals				9,119.19
Total Purchased Property Services				\$9,957.91
500 <u>Other Purchased Services</u>				
530 Communications				17,209.69
549 Other Advertising/Public Relations				195.36
580 Travel				1,553.77
Total Other Purchased Services				\$18,958.82
600 <u>Supplies</u>				
610 General Supplies				9,737.35
630 Food				2,808.44
640 Books and Periodicals				742.60
Total Supplies				\$13,288.39
800 <u>Other Objects</u>				
810 Dues and Fees				1,230.00
Total Other Objects				\$1,230.00
Total 2390 Other Administration Services				\$114,976.65

LEA : 122092102 Central Bucks SD

Printed 12/1/2022 8:19:22 AM

General Fund (10)

2400 Support Services – Pupil Health	<u>Elementary</u>	<u>Secondary</u>	<u>Federal</u>	<u>Total</u>
100 <u>Personnel Services – Salaries</u>				
100 Personnel Services – Salaries			22,147.55	2,560,116.78
Total Personnel Services – Salaries			\$22,147.55	\$2,560,116.78
200 <u>Personnel Services – Employee Benefits</u>				
220 Social Security Contributions			1,398.50	183,851.00
230 PSERS Retirement Contributions			5,855.86	846,960.58
250 Unemployment Compensation			142.28	20,014.43
260 Workers' Compensation			440.00	33,247.45
270 Group Insurance – Self-Insurance				864,329.44
Total Personnel Services – Employee Benefits			\$7,836.64	\$1,948,402.90
300 <u>Purchased Professional and Technical Services</u>				
330 Other Professional Services				59,128.00
Total Purchased Professional and Technical Services				\$59,128.00
500 <u>Other Purchased Services</u>				
580 Travel				448.34
Total Other Purchased Services				\$448.34
600 <u>Supplies</u>				
610 General Supplies				54,528.15
Total Supplies				\$54,528.15
800 <u>Other Objects</u>				
810 Dues and Fees				1,508.00
Total Other Objects				\$1,508.00
Total 2400 Support Services – Pupil Health			\$29,984.19	\$4,624,132.17

LEA : 122092102 Central Bucks SD

Printed 12/1/2022 8:19:22 AM

General Fund (10)

2440 Nursing Services

	<u>Elementary</u>	<u>Secondary</u>	<u>Federal</u>	<u>Total</u>
100 <u>Personnel Services – Salaries</u>				
100 Personnel Services – Salaries			22,147.55	2,492,373.72
Total Personnel Services – Salaries			\$22,147.55	\$2,492,373.72
200 <u>Personnel Services – Employee Benefits</u>				
220 Social Security Contributions			1,398.50	178,853.98
230 PSERS Retirement Contributions			5,855.86	824,413.61
250 Unemployment Compensation			142.28	19,478.75
260 Workers' Compensation			440.00	32,615.95
270 Group Insurance – Self-Insurance				853,278.36
Total Personnel Services – Employee Benefits			\$7,836.64	\$1,908,640.65
300 <u>Purchased Professional and Technical Services</u>				
330 Other Professional Services				59,128.00
Total Purchased Professional and Technical Services				\$59,128.00
500 <u>Other Purchased Services</u>				
580 Travel				448.34
Total Other Purchased Services				\$448.34
600 <u>Supplies</u>				
610 General Supplies				54,528.15
Total Supplies				\$54,528.15
800 <u>Other Objects</u>				
810 Dues and Fees				1,508.00
Total Other Objects				\$1,508.00
Total 2440 Nursing Services			\$29,984.19	\$4,516,626.86

LEA : 122092102 Central Bucks SD

Printed 12/1/2022 8:19:22 AM

General Fund (10)

2450 Nonpublic Health Services	<u>Elementary</u>	<u>Secondary</u>	<u>Federal</u>	<u>Total</u>
100 <u>Personnel Services – Salaries</u>				
100 Personnel Services – Salaries				67,743.06
Total Personnel Services – Salaries				\$67,743.06
200 <u>Personnel Services – Employee Benefits</u>				
220 Social Security Contributions				4,997.02
230 PSERS Retirement Contributions				22,546.97
250 Unemployment Compensation				535.68
260 Workers' Compensation				631.50
270 Group Insurance – Self-Insurance				11,051.08
Total Personnel Services – Employee Benefits				\$39,762.25
Total 2450 Nonpublic Health Services				\$107,505.31

LEA : 122092102 Central Bucks SD

Printed 12/1/2022 8:19:22 AM

General Fund (10)

2500 Support Services – Business	Elementary	Secondary	Federal	Total
100 <u>Personnel Services – Salaries</u>				
100 Personnel Services – Salaries				934,453.48
Total Personnel Services – Salaries				\$934,453.48
200 <u>Personnel Services – Employee Benefits</u>				
220 Social Security Contributions				68,409.57
230 PSERS Retirement Contributions				323,183.54
250 Unemployment Compensation				7,309.82
260 Workers' Compensation				6,997.20
270 Group Insurance – Self-Insurance				246,132.21
291 Other Retirement Plans				10,558.58
Total Personnel Services – Employee Benefits				\$662,590.92
300 <u>Purchased Professional and Technical Services</u>				
330 Other Professional Services				74,968.02
Total Purchased Professional and Technical Services				\$74,968.02
400 <u>Purchased Property Services</u>				
430 Repairs and Maintenance Services				1,826.00
440 Rentals				(30.08)
Total Purchased Property Services				\$1,795.92
500 <u>Other Purchased Services</u>				
530 Communications				1,964.64
549 Other Advertising/Public Relations				12,247.50
580 Travel				1,545.73
Total Other Purchased Services				\$15,757.87
600 <u>Supplies</u>				
610 General Supplies				22,196.71
630 Food				4,077.31
Total Supplies				\$26,274.02
800 <u>Other Objects</u>				
810 Dues and Fees				1,811.34
Total Other Objects				\$1,811.34
Total 2500 Support Services – Business				\$1,717,651.57

LEA : 122092102 Central Bucks SD

Printed 12/1/2022 8:19:22 AM

General Fund (10)

2510 Fiscal Services

	<u>Elementary</u>	<u>Secondary</u>	<u>Federal</u>	<u>Total</u>
100 <u>Personnel Services – Salaries</u>				
100 Personnel Services – Salaries				934,453.48
Total Personnel Services – Salaries				\$934,453.48
200 <u>Personnel Services – Employee Benefits</u>				
220 Social Security Contributions				68,409.57
230 PSERS Retirement Contributions				323,183.54
250 Unemployment Compensation				7,309.82
260 Workers' Compensation				6,997.20
270 Group Insurance – Self-Insurance				246,132.21
291 Other Retirement Plans				10,558.58
Total Personnel Services – Employee Benefits				\$662,590.92
300 <u>Purchased Professional and Technical Services</u>				
330 Other Professional Services				74,968.02
Total Purchased Professional and Technical Services				\$74,968.02
400 <u>Purchased Property Services</u>				
430 Repairs and Maintenance Services				1,826.00
440 Rentals				(30.08)
Total Purchased Property Services				\$1,795.92
500 <u>Other Purchased Services</u>				
530 Communications				1,964.64
549 Other Advertising/Public Relations				12,247.50
580 Travel				1,545.73
Total Other Purchased Services				\$15,757.87
600 <u>Supplies</u>				
610 General Supplies				22,196.71
630 Food				4,077.31
Total Supplies				\$26,274.02
800 <u>Other Objects</u>				
810 Dues and Fees				1,811.34
Total Other Objects				\$1,811.34
Total 2510 Fiscal Services				\$1,717,651.57

LEA : 122092102 Central Bucks SD

Printed 12/1/2022 8:19:22 AM

General Fund (10)

2511 Supervision of Fiscal Services - Head of Component	<u>Elementary</u>	<u>Secondary</u>	<u>Federal</u>	<u>Total</u>
100 <u>Personnel Services – Salaries</u>				
100 Personnel Services – Salaries				85,185.58
Total Personnel Services – Salaries				\$85,185.58
200 <u>Personnel Services – Employee Benefits</u>				
220 Social Security Contributions				6,403.36
230 PSERS Retirement Contributions				26,448.98
250 Unemployment Compensation				665.76
260 Workers' Compensation				233.28
270 Group Insurance – Self-Insurance				8,531.74
291 Other Retirement Plans				2,088.87
Total Personnel Services – Employee Benefits				\$44,371.99
Total 2511 Supervision of Fiscal Services - Head of Component				\$129,557.57

LEA : 122092102 Central Bucks SD

Printed 12/1/2022 8:19:22 AM

General Fund (10)

2515 Financial Accounting Services	<u>Elementary</u>	<u>Secondary</u>	<u>Federal</u>	<u>Total</u>
100 <u>Personnel Services – Salaries</u>				
100 Personnel Services – Salaries				849,267.90
Total Personnel Services – Salaries				\$849,267.90
200 <u>Personnel Services – Employee Benefits</u>				
220 Social Security Contributions				62,006.21
230 PSERS Retirement Contributions				296,734.56
250 Unemployment Compensation				6,644.06
260 Workers' Compensation				6,763.92
270 Group Insurance – Self-Insurance				237,600.47
291 Other Retirement Plans				8,469.71
Total Personnel Services – Employee Benefits				\$618,218.93
300 <u>Purchased Professional and Technical Services</u>				
330 Other Professional Services				74,968.02
Total Purchased Professional and Technical Services				\$74,968.02
400 <u>Purchased Property Services</u>				
430 Repairs and Maintenance Services				1,826.00
440 Rentals				(30.08)
Total Purchased Property Services				\$1,795.92
500 <u>Other Purchased Services</u>				
530 Communications				1,964.64
549 Other Advertising/Public Relations				12,247.50
580 Travel				1,545.73
Total Other Purchased Services				\$15,757.87
600 <u>Supplies</u>				
610 General Supplies				22,196.71
630 Food				4,077.31
Total Supplies				\$26,274.02
800 <u>Other Objects</u>				
810 Dues and Fees				1,811.34
Total Other Objects				\$1,811.34
Total 2515 Financial Accounting Services				\$1,588,094.00

LEA : 122092102 Central Bucks SD

Printed 12/1/2022 8:19:22 AM

General Fund (10)

2600 Operation and Maintenance of Plant Services

Elementary Secondary Federal Total

100 <u>Personnel Services – Salaries</u>			
100 Personnel Services – Salaries			10,624,190.36
Total Personnel Services – Salaries			\$10,624,190.36
200 <u>Personnel Services – Employee Benefits</u>			
220 Social Security Contributions			816,286.15
230 PSERS Retirement Contributions			3,789,714.48
250 Unemployment Compensation			(339,721.71)
260 Workers' Compensation			131,771.12
270 Group Insurance – Self-Insurance			(866,331.98)
291 Other Retirement Plans			10,297.72
Total Personnel Services – Employee Benefits			\$3,542,015.78
300 <u>Purchased Professional and Technical Services</u>			
330 Other Professional Services			68,929.83
340 Technical Services			309,301.00
Total Purchased Professional and Technical Services			\$378,230.83
400 <u>Purchased Property Services</u>			
410 Cleaning Services			596,255.02
420 Utility Services			267,601.23
430 Repairs and Maintenance Services			1,289,256.14
440 Rentals			30,055.40
460 Extermination Services			21,288.00
490 Other Purchased Property Services			493,324.55
Total Purchased Property Services			\$2,697,780.34
500 <u>Other Purchased Services</u>			
521 Fire Insurance			629,558.00
523 General Property and Liability Insurance			92,061.00
529 Other Insurance			102,788.00
530 Communications			15.80
580 Travel			9,795.53
Total Other Purchased Services			\$834,218.33
600 <u>Supplies</u>			
610 General Supplies	724,401.32	1,181,917.94	1,906,319.26
620 Energy			3,135,432.31
630 Food			964.71
650 Supplies & Fees – Technology Related			54,890.43
Total Supplies	\$724,401.32	\$1,181,917.94	\$5,097,606.71
700 <u>Property</u>			
752 Capital Equipment – Original and Additional			23,914.75
762 Capitalized Equipment - Replacement			84,305.91
Total Property			\$108,220.66
800 <u>Other Objects</u>			

LEA : 122092102 Central Bucks SD

Printed 12/1/2022 8:19:22 AM

General Fund (10)

2600 Operation and Maintenance of Plant Services	<u>Elementary</u>	<u>Secondary</u>	<u>Federal</u>	<u>Total</u>
800 <u>Other Objects</u>				
810 Dues and Fees				5,908.25
Total Other Objects				\$5,908.25
Total 2600 Operation and Maintenance of Plant Services	\$724,401.32	\$1,181,917.94		\$23,288,171.26

LEA : 122092102 Central Bucks SD

Printed 12/1/2022 8:19:22 AM

General Fund (10)

2610 Supervision of Operation and Maintenance of Plant Services	<u>Elementary</u>	<u>Secondary</u>	<u>Federal</u>	<u>Total</u>
100 <u>Personnel Services – Salaries</u>				
100 Personnel Services – Salaries				174,551.43
Total Personnel Services – Salaries				\$174,551.43
200 <u>Personnel Services – Employee Benefits</u>				
220 Social Security Contributions				11,003.67
230 PSERS Retirement Contributions				55,249.82
250 Unemployment Compensation				1,239.43
260 Workers' Compensation				622.08
291 Other Retirement Plans				3,174.01
Total Personnel Services – Employee Benefits				\$71,289.01
Total 2610 Supervision of Operation and Maintenance of Plant Services				\$245,840.44

LEA : 122092102 Central Bucks SD

Printed 12/1/2022 8:19:22 AM

General Fund (10)

2611 Supervision of Operation and Maintenance of Plant Services – Head of Component	<u>Elementary</u>	<u>Secondary</u>	<u>Federal</u>	<u>Total</u>
100 <u>Personnel Services – Salaries</u>				
100 Personnel Services – Salaries				174,551.43
Total Personnel Services – Salaries				\$174,551.43
200 <u>Personnel Services – Employee Benefits</u>				
220 Social Security Contributions				11,003.67
230 PSERS Retirement Contributions				55,249.82
250 Unemployment Compensation				1,239.43
260 Workers' Compensation				622.08
291 Other Retirement Plans				3,174.01
Total Personnel Services – Employee Benefits				\$71,289.01
Total 2611 Supervision of Operation and Maintenance of Plant Services – Head of Component				\$245,840.44

LEA : 122092102 Central Bucks SD

Printed 12/1/2022 8:19:22 AM

General Fund (10)

2620 Operation of Buildings Services	Elementary	Secondary	Federal	Total
100 <u>Personnel Services – Salaries</u>				
100 Personnel Services – Salaries				10,449,638.93
Total Personnel Services – Salaries				\$10,449,638.93
200 <u>Personnel Services – Employee Benefits</u>				
220 Social Security Contributions				805,282.48
230 PSERS Retirement Contributions				3,734,464.66
250 Unemployment Compensation				(340,961.14)
260 Workers' Compensation				131,149.04
270 Group Insurance – Self-Insurance				(866,331.98)
291 Other Retirement Plans				7,123.71
Total Personnel Services – Employee Benefits				\$3,470,726.77
300 <u>Purchased Professional and Technical Services</u>				
330 Other Professional Services				68,929.83
340 Technical Services				309,301.00
Total Purchased Professional and Technical Services				\$378,230.83
400 <u>Purchased Property Services</u>				
410 Cleaning Services				596,255.02
420 Utility Services				267,601.23
430 Repairs and Maintenance Services				1,289,256.14
440 Rentals				30,055.40
460 Extermination Services				21,288.00
490 Other Purchased Property Services				493,324.55
Total Purchased Property Services				\$2,697,780.34
500 <u>Other Purchased Services</u>				
521 Fire Insurance				629,558.00
523 General Property and Liability Insurance				92,061.00
529 Other Insurance				102,788.00
530 Communications				15.80
580 Travel				9,795.53
Total Other Purchased Services				\$834,218.33
600 <u>Supplies</u>				
610 General Supplies	724,401.32	1,181,917.94		1,906,319.26
620 Energy				3,135,432.31
630 Food				964.71
650 Supplies & Fees – Technology Related				54,890.43
Total Supplies	\$724,401.32	\$1,181,917.94		\$5,097,606.71
700 <u>Property</u>				
752 Capital Equipment – Original and Additional				23,914.75
762 Capitalized Equipment - Replacement				84,305.91
Total Property				\$108,220.66
800 <u>Other Objects</u>				

LEA : 122092102 Central Bucks SD

Printed 12/1/2022 8:19:22 AM

General Fund (10)				
2620 Operation of Buildings Services	<u>Elementary</u>	<u>Secondary</u>	<u>Federal</u>	<u>Total</u>
800 <u>Other Objects</u>				
810 Dues and Fees				5,908.25
Total Other Objects				\$5,908.25
Total 2620 Operation of Buildings Services	\$724,401.32	\$1,181,917.94		\$23,042,330.82

LEA : 122092102 Central Bucks SD

Printed 12/1/2022 8:19:22 AM

General Fund (10)

2700 Student Transportation Services	Elementary	Secondary	Federal	Total
100 <u>Personnel Services – Salaries</u>				
100 Personnel Services – Salaries				5,909,009.49
Total Personnel Services – Salaries				\$5,909,009.49
200 <u>Personnel Services – Employee Benefits</u>				
220 Social Security Contributions				422,993.35
230 PSERS Retirement Contributions				2,001,589.97
250 Unemployment Compensation				46,123.96
260 Workers' Compensation				98,566.71
270 Group Insurance – Self-Insurance				2,076,422.38
291 Other Retirement Plans				4,162.62
Total Personnel Services – Employee Benefits				\$4,649,858.99
300 <u>Purchased Professional and Technical Services</u>				
330 Other Professional Services				13,764.99
Total Purchased Professional and Technical Services				\$13,764.99
400 <u>Purchased Property Services</u>				
410 Cleaning Services				6,155.71
420 Utility Services				12,118.08
430 Repairs and Maintenance Services				146,229.33
440 Rentals				17,731.43
Total Purchased Property Services				\$182,234.55
500 <u>Other Purchased Services</u>				
511 Student Transportation Services from Another LEA Within the State				234,856.02
513 Contracted Carriers				8,037,734.79
516 Student Transportation Services From the IU				809,275.08
522 Automotive Liability Insurance				214,687.49
530 Communications				46,882.90
580 Travel				377.08
Total Other Purchased Services				\$9,343,813.36
600 <u>Supplies</u>				
610 General Supplies				244,173.25
620 Energy				320,336.39
630 Food				1,565.52
650 Supplies & Fees – Technology Related				145,726.94
Total Supplies				\$711,802.10
800 <u>Other Objects</u>				
810 Dues and Fees				727.28
Total Other Objects				\$727.28
Total 2700 Student Transportation Services				\$20,811,210.76

LEA : 122092102 Central Bucks SD

Printed 12/1/2022 8:19:22 AM

General Fund (10)

2710 Supervision of Student Transportation Services	<u>Elementary</u>	<u>Secondary</u>	<u>Federal</u>	<u>Total</u>
100 <u>Personnel Services – Salaries</u>				
100 Personnel Services – Salaries				113,622.08
Total Personnel Services – Salaries				\$113,622.08
200 <u>Personnel Services – Employee Benefits</u>				
220 Social Security Contributions				8,258.59
230 PSERS Retirement Contributions				39,699.63
250 Unemployment Compensation				888.71
260 Workers' Compensation				622.08
270 Group Insurance – Self-Insurance				26,540.88
291 Other Retirement Plans				2,277.22
Total Personnel Services – Employee Benefits				\$78,287.11
Total 2710 Supervision of Student Transportation Services				\$191,909.19

LEA : 122092102 Central Bucks SD

Printed 12/1/2022 8:19:22 AM

General Fund (10)

2711 Supervision of Student Transportation Services – Head of Component				<u>Elementary</u>	<u>Secondary</u>	<u>Federal</u>	<u>Total</u>
100 <u>Personnel Services – Salaries</u>							
100 Personnel Services – Salaries							113,622.08
Total Personnel Services – Salaries							\$113,622.08
200 <u>Personnel Services – Employee Benefits</u>							
220 Social Security Contributions							8,258.59
230 PSERS Retirement Contributions							39,699.63
250 Unemployment Compensation							888.71
260 Workers' Compensation							622.08
270 Group Insurance – Self-Insurance							26,540.88
291 Other Retirement Plans							2,277.22
Total Personnel Services – Employee Benefits							\$78,287.11
Total 2711 Supervision of Student Transportation Services – Head of Component							\$191,909.19

LEA : 122092102 Central Bucks SD

Printed 12/1/2022 8:19:22 AM

General Fund (10)

2720 Vehicle Operation Services	Elementary	Secondary	Federal	Total
100 <u>Personnel Services – Salaries</u>				
100 Personnel Services – Salaries				5,215,848.65
Total Personnel Services – Salaries				\$5,215,848.65
200 <u>Personnel Services – Employee Benefits</u>				
220 Social Security Contributions				373,261.28
230 PSERS Retirement Contributions				1,765,701.31
250 Unemployment Compensation				40,711.72
260 Workers' Compensation				88,150.17
270 Group Insurance – Self-Insurance				1,844,893.35
291 Other Retirement Plans				1,696.86
Total Personnel Services – Employee Benefits				\$4,114,414.69
300 <u>Purchased Professional and Technical Services</u>				
330 Other Professional Services				12,388.49
Total Purchased Professional and Technical Services				\$12,388.49
400 <u>Purchased Property Services</u>				
410 Cleaning Services				5,540.14
420 Utility Services				10,906.27
430 Repairs and Maintenance Services				131,606.40
440 Rentals				15,958.28
Total Purchased Property Services				\$164,011.09
500 <u>Other Purchased Services</u>				
511 Student Transportation Services from Another LEA Within the State				211,370.42
513 Contracted Carriers				7,233,961.31
516 Student Transportation Services From the IU				728,347.57
522 Automotive Liability Insurance				193,218.74
530 Communications				42,194.61
580 Travel				339.37
Total Other Purchased Services				\$8,409,432.02
600 <u>Supplies</u>				
610 General Supplies				219,755.92
620 Energy				288,302.75
630 Food				1,408.97
650 Supplies & Fees – Technology Related				131,154.25
Total Supplies				\$640,621.89
800 <u>Other Objects</u>				
810 Dues and Fees				654.55
Total Other Objects				\$654.55
Total 2720 Vehicle Operation Services				\$18,557,371.38

LEA : 122092102 Central Bucks SD

Printed 12/1/2022 8:19:22 AM

General Fund (10)

2750 Nonpublic Transportation	Elementary	Secondary	Federal	Total
100 <u>Personnel Services – Salaries</u>				
100 Personnel Services – Salaries				579,538.76
Total Personnel Services – Salaries				\$579,538.76
200 <u>Personnel Services – Employee Benefits</u>				
220 Social Security Contributions				41,473.48
230 PSERS Retirement Contributions				196,189.03
250 Unemployment Compensation				4,523.53
260 Workers' Compensation				9,794.46
270 Group Insurance – Self-Insurance				204,988.15
291 Other Retirement Plans				188.54
Total Personnel Services – Employee Benefits				\$457,157.19
300 <u>Purchased Professional and Technical Services</u>				
330 Other Professional Services				1,376.50
Total Purchased Professional and Technical Services				\$1,376.50
400 <u>Purchased Property Services</u>				
410 Cleaning Services				615.57
420 Utility Services				1,211.81
430 Repairs and Maintenance Services				14,622.93
440 Rentals				1,773.15
Total Purchased Property Services				\$18,223.46
500 <u>Other Purchased Services</u>				
511 Student Transportation Services from Another LEA Within the State				23,485.60
513 Contracted Carriers				803,773.48
516 Student Transportation Services From the IU				80,927.51
522 Automotive Liability Insurance				21,468.75
530 Communications				4,688.29
580 Travel				37.71
Total Other Purchased Services				\$934,381.34
600 <u>Supplies</u>				
610 General Supplies				24,417.33
620 Energy				32,033.64
630 Food				156.55
650 Supplies & Fees – Technology Related				14,572.69
Total Supplies				\$71,180.21
800 <u>Other Objects</u>				
810 Dues and Fees				72.73
Total Other Objects				\$72.73
Total 2750 Nonpublic Transportation				\$2,061,930.19

LEA : 122092102 Central Bucks SD

Printed 12/1/2022 8:19:22 AM

General Fund (10)

2800 Support Services – Central

	<u>Elementary</u>	<u>Secondary</u>	<u>Federal</u>	<u>Total</u>
100 <u>Personnel Services – Salaries</u>				
100 Personnel Services – Salaries			11,810.28	1,430,253.38
Total Personnel Services – Salaries			\$11,810.28	\$1,430,253.38
200 <u>Personnel Services – Employee Benefits</u>				
220 Social Security Contributions			354.78	100,748.44
230 PSERS Retirement Contributions			798.23	494,299.26
240 Tuition Reimbursement				13,334.00
250 Unemployment Compensation			1,326.06	12,400.38
260 Workers' Compensation			556.30	11,857.42
270 Group Insurance – Self-Insurance				367,255.54
291 Other Retirement Plans				16,636.04
Total Personnel Services – Employee Benefits			\$3,035.37	\$1,016,531.08
300 <u>Purchased Professional and Technical Services</u>				
330 Other Professional Services			11,562.50	237,445.04
340 Technical Services				240,274.04
350 Security / Safety Services				57,968.79
360 Employee Training and Development Services				3,707.50
Total Purchased Professional and Technical Services			\$11,562.50	\$539,395.37
400 <u>Purchased Property Services</u>				
430 Repairs and Maintenance Services				1,292,943.74
440 Rentals				(144,253.45)
Total Purchased Property Services				\$1,148,690.29
500 <u>Other Purchased Services</u>				
530 Communications				633,541.40
549 Other Advertising/Public Relations				4,324.72
580 Travel				1,934.02
Total Other Purchased Services				\$639,800.14
600 <u>Supplies</u>				
610 General Supplies				95,552.66
630 Food				1,475.43
640 Books and Periodicals				2,255.61
650 Supplies & Fees – Technology Related				115,251.80
Total Supplies				\$214,535.50
800 <u>Other Objects</u>				
810 Dues and Fees				4,385.00
890 Miscellaneous Expenditures				48.66
Total Other Objects				\$4,433.66
Total 2800 Support Services – Central			\$26,408.15	\$4,993,639.42

LEA : 122092102 Central Bucks SD

Printed 12/1/2022 8:19:22 AM

General Fund (10)

2810 Planning, Research, Development and Evaluation Services	<u>Elementary</u>	<u>Secondary</u>	<u>Federal</u>	<u>Total</u>
100 <u>Personnel Services – Salaries</u>				
100 Personnel Services – Salaries				581,696.13
Total Personnel Services – Salaries				\$581,696.13
200 <u>Personnel Services – Employee Benefits</u>				
220 Social Security Contributions				42,294.00
230 PSERS Retirement Contributions				203,556.48
250 Unemployment Compensation				4,552.42
260 Workers' Compensation				5,028.48
270 Group Insurance – Self-Insurance				217,029.12
291 Other Retirement Plans				4,292.11
Total Personnel Services – Employee Benefits				\$476,752.61
300 <u>Purchased Professional and Technical Services</u>				
340 Technical Services				240,274.04
350 Security / Safety Services				57,968.79
Total Purchased Professional and Technical Services				\$298,242.83
400 <u>Purchased Property Services</u>				
430 Repairs and Maintenance Services				1,265,372.32
440 Rentals				(144,253.45)
Total Purchased Property Services				\$1,121,118.87
500 <u>Other Purchased Services</u>				
530 Communications				633,541.40
580 Travel				457.18
Total Other Purchased Services				\$633,998.58
600 <u>Supplies</u>				
610 General Supplies				85,920.27
630 Food				1,179.79
650 Supplies & Fees – Technology Related				114,618.01
Total Supplies				\$201,718.07
800 <u>Other Objects</u>				
810 Dues and Fees				249.00
Total Other Objects				\$249.00
Total 2810 Planning, Research, Development and Evaluation Services				\$3,313,776.09

LEA : 122092102 Central Bucks SD

Printed 12/1/2022 8:19:22 AM

General Fund (10)

2820 Information Services	<u>Elementary</u>	<u>Secondary</u>	<u>Federal</u>	<u>Total</u>
100 <u>Personnel Services – Salaries</u>				
100 Personnel Services – Salaries				159,627.06
Total Personnel Services – Salaries				\$159,627.06
200 <u>Personnel Services – Employee Benefits</u>				
220 Social Security Contributions				11,300.06
230 PSERS Retirement Contributions				54,975.35
250 Unemployment Compensation				1,249.89
260 Workers' Compensation				622.08
270 Group Insurance – Self-Insurance				26,540.88
291 Other Retirement Plans				3,192.50
Total Personnel Services – Employee Benefits				\$97,880.76
Total 2820 Information Services				\$257,507.82

LEA : 122092102 Central Bucks SD

Printed 12/1/2022 8:19:22 AM

General Fund (10)

2821 Supervision of Information Services	<u>Elementary</u>	<u>Secondary</u>	<u>Federal</u>	<u>Total</u>
100 <u>Personnel Services – Salaries</u>				
100 Personnel Services – Salaries				159,627.06
Total Personnel Services – Salaries				\$159,627.06
200 <u>Personnel Services – Employee Benefits</u>				
220 Social Security Contributions				11,300.06
230 PSERS Retirement Contributions				54,975.35
250 Unemployment Compensation				1,249.89
260 Workers' Compensation				622.08
270 Group Insurance – Self-Insurance				26,540.88
291 Other Retirement Plans				3,192.50
Total Personnel Services – Employee Benefits				\$97,880.76
Total 2821 Supervision of Information Services				\$257,507.82

LEA : 122092102 Central Bucks SD

Printed 12/1/2022 8:19:22 AM

General Fund (10)

2830 Staff Services

	<u>Elementary</u>	<u>Secondary</u>	<u>Federal</u>	<u>Total</u>
100 <u>Personnel Services – Salaries</u>				
100 Personnel Services – Salaries				677,119.91
Total Personnel Services – Salaries				\$677,119.91
200 <u>Personnel Services – Employee Benefits</u>				
220 Social Security Contributions				46,799.60
230 PSERS Retirement Contributions				234,969.20
240 Tuition Reimbursement				13,334.00
250 Unemployment Compensation				5,272.01
260 Workers' Compensation				5,650.56
270 Group Insurance – Self-Insurance				123,685.54
291 Other Retirement Plans				9,151.43
Total Personnel Services – Employee Benefits				\$438,862.34
300 <u>Purchased Professional and Technical Services</u>				
330 Other Professional Services				225,882.54
360 Employee Training and Development Services				3,707.50
Total Purchased Professional and Technical Services				\$229,590.04
400 <u>Purchased Property Services</u>				
430 Repairs and Maintenance Services				27,571.42
Total Purchased Property Services				\$27,571.42
500 <u>Other Purchased Services</u>				
549 Other Advertising/Public Relations				4,324.72
580 Travel				1,476.84
Total Other Purchased Services				\$5,801.56
600 <u>Supplies</u>				
610 General Supplies				9,632.39
630 Food				295.64
640 Books and Periodicals				2,255.61
650 Supplies & Fees – Technology Related				633.79
Total Supplies				\$12,817.43
800 <u>Other Objects</u>				
810 Dues and Fees				4,136.00
890 Miscellaneous Expenditures				48.66
Total Other Objects				\$4,184.66
Total 2830 Staff Services				\$1,395,947.36

LEA : 122092102 Central Bucks SD

Printed 12/1/2022 8:19:22 AM

General Fund (10)

2831 Supervision of Staff Services	<u>Elementary</u>	<u>Secondary</u>	<u>Federal</u>	<u>Total</u>
100 <u>Personnel Services – Salaries</u>				
100 Personnel Services – Salaries				203,200.54
Total Personnel Services – Salaries				\$203,200.54
200 <u>Personnel Services – Employee Benefits</u>				
220 Social Security Contributions				12,042.48
230 PSERS Retirement Contributions				70,998.32
250 Unemployment Compensation				1,589.65
260 Workers' Compensation				622.08
270 Group Insurance – Self-Insurance				9,107.64
291 Other Retirement Plans				4,072.92
Total Personnel Services – Employee Benefits				\$98,433.09
Total 2831 Supervision of Staff Services				\$301,633.63

LEA : 122092102 Central Bucks SD

Printed 12/1/2022 8:19:22 AM

General Fund (10)				
2832 Recruitment and Placement Services	<u>Elementary</u>	<u>Secondary</u>	<u>Federal</u>	<u>Total</u>
100 <u>Personnel Services – Salaries</u>				
100 Personnel Services – Salaries				473,919.37
Total Personnel Services – Salaries				\$473,919.37
200 <u>Personnel Services – Employee Benefits</u>				
220 Social Security Contributions				34,757.12
230 PSERS Retirement Contributions				163,970.88
250 Unemployment Compensation				3,682.36
260 Workers' Compensation				5,028.48
270 Group Insurance – Self-Insurance				114,577.90
291 Other Retirement Plans				5,078.51
Total Personnel Services – Employee Benefits				\$327,095.25
300 <u>Purchased Professional and Technical Services</u>				
330 Other Professional Services				225,882.54
Total Purchased Professional and Technical Services				\$225,882.54
400 <u>Purchased Property Services</u>				
430 Repairs and Maintenance Services				27,571.42
Total Purchased Property Services				\$27,571.42
500 <u>Other Purchased Services</u>				
549 Other Advertising/Public Relations				4,324.72
580 Travel				1,476.84
Total Other Purchased Services				\$5,801.56
600 <u>Supplies</u>				
610 General Supplies				9,632.39
630 Food				295.64
640 Books and Periodicals				2,255.61
650 Supplies & Fees – Technology Related				633.79
Total Supplies				\$12,817.43
800 <u>Other Objects</u>				
810 Dues and Fees				4,136.00
890 Miscellaneous Expenditures				48.66
Total Other Objects				\$4,184.66
Total 2832 Recruitment and Placement Services				\$1,077,272.23

LEA : 122092102 Central Bucks SD

Printed 12/1/2022 8:19:22 AM

General Fund (10)

2834 Staff Development Services – Non-Instructional, Certified Staff Only	<u>Elementary</u>	<u>Secondary</u>	<u>Federal</u>	<u>Total</u>
200 <u>Personnel Services – Employee Benefits</u>				
240 Tuition Reimbursement				13,334.00
Total Personnel Services – Employee Benefits				\$13,334.00
Total 2834 Staff Development Services – Non-Instructional, Certified Staff Only				\$13,334.00

LEA : 122092102 Central Bucks SD

Printed 12/1/2022 8:19:22 AM

General Fund (10)

2836 Staff Development Services – Non-Instructional, Non-Certified Staff Only	<u>Elementary</u>	<u>Secondary</u>	<u>Federal</u>	<u>Total</u>
300 <u>Purchased Professional and Technical Services</u>				
360 Employee Training and Development Services				3,707.50
Total Purchased Professional and Technical Services				\$3,707.50
Total 2836 Staff Development Services – Non-Instructional, Non-Certified Staff Only				\$3,707.50

LEA : 122092102 Central Bucks SD

Printed 12/1/2022 8:19:22 AM

General Fund (10)

2850 State and Federal Agency Liaison Services	<u>Elementary</u>	<u>Secondary</u>	<u>Federal</u>	<u>Total</u>
100 <u>Personnel Services – Salaries</u>				
100 Personnel Services – Salaries			11,810.28	11,810.28
Total Personnel Services – Salaries			\$11,810.28	\$11,810.28
200 <u>Personnel Services – Employee Benefits</u>				
220 Social Security Contributions			354.78	354.78
230 PSERS Retirement Contributions			798.23	798.23
250 Unemployment Compensation			1,326.06	1,326.06
260 Workers' Compensation			556.30	556.30
Total Personnel Services – Employee Benefits			\$3,035.37	\$3,035.37
300 <u>Purchased Professional and Technical Services</u>				
330 Other Professional Services			11,562.50	11,562.50
Total Purchased Professional and Technical Services			\$11,562.50	\$11,562.50
Total 2850 State and Federal Agency Liaison Services			\$26,408.15	\$26,408.15

LEA : 122092102 Central Bucks SD

Printed 12/1/2022 8:19:22 AM

General Fund (10)

2900 Other Support Services

Elementary Secondary Federal Total

500 Other Purchased Services

595 IU Payments By Withholding 141,147.28

596 Direct Payments To Intermediate Units 84,379.00

Total Other Purchased Services				\$225,526.28
Total 2900 Other Support Services				\$225,526.28

LEA : 122092102 Central Bucks SD

Printed 12/1/2022 8:19:22 AM

General Fund (10)

2910 Support Services Not Listed Elsewhere In the 2000 Series

Elementary Secondary Federal Total

500 <u>Other Purchased Services</u>				
595 IU Payments By Withholding				141,147.28
596 Direct Payments To Intermediate Units				84,379.00
Total Other Purchased Services				\$225,526.28
Total 2910 Support Services Not Listed Elsewhere In the 2000 Series				\$225,526.28

LEA : 122092102 Central Bucks SD

Printed 12/1/2022 8:19:29 AM

General Fund (10)

3000 Operation of Non-Instructional Services		<u>Total</u>
100 <u>Personnel Services – Salaries</u>		
100 Personnel Services – Salaries	4,906,780.62	
Total Personnel Services – Salaries	\$4,906,780.62	
200 <u>Personnel Services – Employee Benefits</u>		
220 Social Security Contributions	365,813.72	
230 PSERS Retirement Contributions	1,519,941.62	
250 Unemployment Compensation	37,553.11	
260 Workers' Compensation	94,069.65	
270 Group Insurance – Self-Insurance	721,660.51	
291 Other Retirement Plans	5,708.28	
Total Personnel Services – Employee Benefits	\$2,744,746.89	
300 <u>Purchased Professional and Technical Services</u>		
329 Professional Educational Services – Other	41,171.12	
330 Other Professional Services	768,002.03	
Total Purchased Professional and Technical Services	\$809,173.15	
400 <u>Purchased Property Services</u>		
430 Repairs and Maintenance Services	5,477.00	
Total Purchased Property Services	\$5,477.00	
500 <u>Other Purchased Services</u>		
549 Other Advertising/Public Relations	500.00	
580 Travel	48,956.12	
Total Other Purchased Services	\$49,456.12	
600 <u>Supplies</u>		
610 General Supplies	583,333.45	
630 Food	43,167.08	
650 Supplies & Fees – Technology Related	459.00	
Total Supplies	\$626,959.53	
700 <u>Property</u>		
752 Capital Equipment – Original and Additional	10,213.14	
762 Capitalized Equipment - Replacement	21,699.04	
Total Property	\$31,912.18	
800 <u>Other Objects</u>		
810 Dues and Fees	31,846.59	
Total Other Objects	\$31,846.59	
Total 3000 Operation of Non-Instructional Services	\$9,206,352.08	

LEA : 122092102 Central Bucks SD

Printed 12/1/2022 8:19:29 AM

General Fund (10)

3200 Student Activities

	<u>Elementary</u>	<u>Secondary</u>	<u>Federal</u>	<u>Total</u>
100 <u>Personnel Services – Salaries</u>				
100 Personnel Services – Salaries				3,185,544.67
Total Personnel Services – Salaries				\$3,185,544.67
200 <u>Personnel Services – Employee Benefits</u>				
220 Social Security Contributions				236,526.91
230 PSERS Retirement Contributions				1,026,469.62
250 Unemployment Compensation				24,173.95
260 Workers' Compensation				33,137.49
270 Group Insurance – Self-Insurance				410,128.33
291 Other Retirement Plans				4,024.75
Total Personnel Services – Employee Benefits				\$1,734,461.05
300 <u>Purchased Professional and Technical Services</u>				
330 Other Professional Services				740,940.80
Total Purchased Professional and Technical Services				\$740,940.80
500 <u>Other Purchased Services</u>				
580 Travel				40,271.29
Total Other Purchased Services				\$40,271.29
600 <u>Supplies</u>				
610 General Supplies				312,719.61
650 Supplies & Fees – Technology Related				459.00
Total Supplies				\$313,178.61
700 <u>Property</u>				
752 Capital Equipment – Original and Additional				7,730.00
762 Capitalized Equipment - Replacement				21,699.04
Total Property				\$29,429.04
800 <u>Other Objects</u>				
810 Dues and Fees				31,326.59
Total Other Objects				\$31,326.59
Total 3200 Student Activities				\$6,075,152.05

LEA : 122092102 Central Bucks SD

Printed 12/1/2022 8:19:29 AM

General Fund (10)				
3300 Community Services				
	<u>Elementary</u>	<u>Secondary</u>	<u>Federal</u>	<u>Total</u>
100 <u>Personnel Services – Salaries</u>				
100 Personnel Services – Salaries				1,721,235.95
Total Personnel Services – Salaries				\$1,721,235.95
200 <u>Personnel Services – Employee Benefits</u>				
220 Social Security Contributions				129,286.81
230 PSERS Retirement Contributions				493,472.00
250 Unemployment Compensation				13,379.16
260 Workers' Compensation				60,932.16
270 Group Insurance – Self-Insurance				311,532.18
291 Other Retirement Plans				1,683.53
Total Personnel Services – Employee Benefits				\$1,010,285.84
300 <u>Purchased Professional and Technical Services</u>				
329 Professional Educational Services – Other				41,171.12
330 Other Professional Services				27,061.23
Total Purchased Professional and Technical Services				\$68,232.35
400 <u>Purchased Property Services</u>				
430 Repairs and Maintenance Services				5,477.00
Total Purchased Property Services				\$5,477.00
500 <u>Other Purchased Services</u>				
549 Other Advertising/Public Relations				500.00
580 Travel			1,040.00	8,684.83
Total Other Purchased Services			\$1,040.00	\$9,184.83
600 <u>Supplies</u>				
610 General Supplies			4,061.64	270,613.84
630 Food			1,663.50	43,167.08
Total Supplies			\$5,725.14	\$313,780.92
700 <u>Property</u>				
752 Capital Equipment – Original and Additional				2,483.14
Total Property				\$2,483.14
800 <u>Other Objects</u>				
810 Dues and Fees			520.00	520.00
Total Other Objects			\$520.00	\$520.00
Total 3300 Community Services			\$7,285.14	\$3,131,200.03

LEA : 122092102 Central Bucks SD

Printed 12/1/2022 8:19:36 AM

General Fund (10)	
5000 Other Expenditures and Financing Uses	<u>Total</u>
800 <u>Other Objects</u>	
830 Interest	567,491.91
Total Other Objects	\$567,491.91
900 <u>Other Uses of Funds</u>	
910 Redemption of Principal	3,865,000.00
939 Other Fund Transfers	16,581,876.20
Total Other Uses of Funds	\$20,446,876.20
Total 5000 Other Expenditures and Financing Uses	\$21,014,368.11

LEA : 122092102 Central Bucks SD

Printed 12/1/2022 8:19:36 AM

General Fund (10)

5100 Debt Service / Other Expenditures and Financing Uses	<u>Elementary</u>	<u>Secondary</u>	<u>Federal</u>	<u>Total</u>
800 <u>Other Objects</u>				
830 Interest				567,491.91
Total Other Objects				\$567,491.91
900 <u>Other Uses of Funds</u>				
910 Redemption of Principal				3,865,000.00
Total Other Uses of Funds				\$3,865,000.00
Total 5100 Debt Service / Other Expenditures and Financing Uses				\$4,432,491.91

LEA : 122092102 Central Bucks SD

Printed 12/1/2022 8:19:36 AM

General Fund (10)

5110 Debt Service	<u>Elementary</u>	<u>Secondary</u>	<u>Federal</u>	<u>Total</u>
800 <u>Other Objects</u>				
830 Interest				567,491.91
Total Other Objects				\$567,491.91
900 <u>Other Uses of Funds</u>				
910 Redemption of Principal				3,865,000.00
Total Other Uses of Funds				\$3,865,000.00
Total 5110 Debt Service				\$4,432,491.91

LEA : 122092102 Central Bucks SD

Printed 12/1/2022 8:19:36 AM

General Fund (10)

5200 Interfund Transfers – Out	<u>Elementary</u>	<u>Secondary</u>	<u>Federal</u>	<u>Total</u>
900 <u>Other Uses of Funds</u>				
939 Other Fund Transfers				16,581,876.20
Total Other Uses of Funds				\$16,581,876.20
Total 5200 Interfund Transfers – Out				\$16,581,876.20

LEA : 122092102 Central Bucks SD

Printed 12/1/2022 8:19:36 AM

General Fund (10)

5230 Capital Projects Fund Transfers	<u>Elementary</u>	<u>Secondary</u>	<u>Federal</u>	<u>Total</u>
900 <u>Other Uses of Funds</u>				
939 Other Fund Transfers				16,581,876.20
Total Other Uses of Funds				\$16,581,876.20
Total 5230 Capital Projects Fund Transfers				\$16,581,876.20

LEA : 122092102 Central Bucks SD

Printed 12/1/2022 8:19:19 AM

Other Capital Projects Fund (39)

1000 Instruction		<u>Total</u>
500 <u>Other Purchased Services</u>		
564 Tuition To Career and Technology Centers		283,604.00
Total Other Purchased Services		\$283,604.00
Total 1000 Instruction		\$283,604.00

LEA : 122092102 Central Bucks SD

Printed 12/1/2022 8:19:19 AM

Other Capital Projects Fund (39)

1300 Vocational Education

	<u>Elementary</u>	<u>Secondary</u>	<u>Federal</u>	<u>Total</u>
500 <u>Other Purchased Services</u>				
564 Tuition To Career and Technology Centers		283,604.00		283,604.00
Total Other Purchased Services		\$283,604.00		\$283,604.00
Total 1300 Vocational Education		\$283,604.00		\$283,604.00

LEA : 122092102 Central Bucks SD

Printed 12/1/2022 8:19:26 AM

Other Capital Projects Fund (39)

2000 Support Services		<u>Total</u>
400 <u>Purchased Property Services</u>		
430 Repairs and Maintenance Services	29,340.00	
Total Purchased Property Services	\$29,340.00	
600 <u>Supplies</u>		
610 General Supplies	822,319.35	
Total Supplies	\$822,319.35	
700 <u>Property</u>		
752 Capital Equipment – Original and Additional	3,858,195.72	
762 Capitalized Equipment - Replacement	625,255.12	
Total Property	\$4,483,450.84	
Total 2000 Support Services	\$5,335,110.19	

LEA : 122092102 Central Bucks SD

Printed 12/1/2022 8:19:26 AM

Other Capital Projects Fund (39)

2200 Support Services – Instructional Staff

	<u>Elementary</u>	<u>Secondary</u>	<u>Federal</u>	<u>Total</u>
600 <u>Supplies</u>				
610 General Supplies		822,319.35		822,319.35
Total Supplies		\$822,319.35		\$822,319.35
700 <u>Property</u>				
752 Capital Equipment – Original and Additional		3,759,615.72		3,759,615.72
Total Property		\$3,759,615.72		\$3,759,615.72
Total 2200 Support Services – Instructional Staff		\$4,581,935.07		\$4,581,935.07

LEA : 122092102 Central Bucks SD

Printed 12/1/2022 8:19:26 AM

Other Capital Projects Fund (39)

2240 Computer-Assisted Instruction Support Services

	<u>Elementary</u>	<u>Secondary</u>	<u>Federal</u>	<u>Total</u>
600 <u>Supplies</u>				
610 General Supplies		822,319.35		822,319.35
Total Supplies		\$822,319.35		\$822,319.35
700 <u>Property</u>				
752 Capital Equipment – Original and Additional		3,759,615.72		3,759,615.72
Total Property		\$3,759,615.72		\$3,759,615.72
Total 2240 Computer-Assisted Instruction Support Services		\$4,581,935.07		\$4,581,935.07

LEA : 122092102 Central Bucks SD

Printed 12/1/2022 8:19:26 AM

Other Capital Projects Fund (39)

2600 Operation and Maintenance of Plant Services

Elementary Secondary Federal Total

700 Property

752 Capital Equipment – Original and Additional 98,580.00

Total Property \$98,580.00

Total 2600 Operation and Maintenance of Plant Services \$98,580.00

LEA : 122092102 Central Bucks SD

Printed 12/1/2022 8:19:26 AM

Other Capital Projects Fund (39)

2620 Operation of Buildings Services

<u>Elementary</u>	<u>Secondary</u>	<u>Federal</u>	<u>Total</u>
-------------------	------------------	----------------	--------------

700 Property

752 Capital Equipment – Original and Additional			98,580.00
---	--	--	-----------

Total Property			\$98,580.00
-----------------------	--	--	--------------------

Total 2620 Operation of Buildings Services			\$98,580.00
---	--	--	--------------------

LEA : 122092102 Central Bucks SD

Printed 12/1/2022 8:19:26 AM

Other Capital Projects Fund (39)

2700 Student Transportation Services

	<u>Elementary</u>	<u>Secondary</u>	<u>Federal</u>	<u>Total</u>
700 <u>Property</u>				
762 Capitalized Equipment - Replacement			625,255.12	625,255.12
Total Property			\$625,255.12	\$625,255.12
Total 2700 Student Transportation Services			\$625,255.12	\$625,255.12

LEA : 122092102 Central Bucks SD

Printed 12/1/2022 8:19:26 AM

Other Capital Projects Fund (39)

2720 Vehicle Operation Services

	<u>Elementary</u>	<u>Secondary</u>	<u>Federal</u>	<u>Total</u>
700 <u>Property</u>				
762 Capitalized Equipment - Replacement			625,255.12	625,255.12
Total Property			\$625,255.12	\$625,255.12
Total 2720 Vehicle Operation Services			\$625,255.12	\$625,255.12

LEA : 122092102 Central Bucks SD

Printed 12/1/2022 8:19:26 AM

Other Capital Projects Fund (39)

2800 Support Services – Central

	<u>Elementary</u>	<u>Secondary</u>	<u>Federal</u>	<u>Total</u>
400 <u>Purchased Property Services</u>				
430 Repairs and Maintenance Services				29,340.00
Total Purchased Property Services				\$29,340.00
Total 2800 Support Services – Central				\$29,340.00

LEA : 122092102 Central Bucks SD

Printed 12/1/2022 8:19:26 AM

Other Capital Projects Fund (39)

2810 Planning, Research, Development and Evaluation Services

Elementary

Secondary

Federal

Total

400 Purchased Property Services

430 Repairs and Maintenance Services

29,340.00

Total Purchased Property Services				\$29,340.00
Total 2810 Planning, Research, Development and Evaluation Services				\$29,340.00

LEA : 122092102 Central Bucks SD

Printed 12/1/2022 8:19:31 AM

Other Capital Projects Fund (39)

4000 Facilities Acquisition, Construction and Improvement Services

Total

400 Purchased Property Services

450 Construction Services	10,921,906.28
Total Purchased Property Services	\$10,921,906.28
Total 4000 Facilities Acquisition, Construction and Improvement Services	\$10,921,906.28

LEA : 122092102 Central Bucks SD

Printed 12/1/2022 8:19:31 AM

Other Capital Projects Fund (39)

4500 Building Acquisition and Construction Services – Original and Additional	<u>Elementary</u>	<u>Secondary</u>	<u>Federal</u>	<u>Total</u>
400 <u>Purchased Property Services</u>				
450 Construction Services				10,921,906.28
Total Purchased Property Services				\$10,921,906.28
Total 4500 Building Acquisition and Construction Services – Original and Additional				\$10,921,906.28

LEA : 122092102 Central Bucks SD

Printed 12/1/2022 8:19:39 AM

	<u>General Fund(10)</u>	<u>Student Sponsored Activity Fund(21)</u>	<u>Public Purpose Trust(27)</u>	<u>Other Compt Approved (28)</u>	<u>Athletic / Activity(29)</u>
1000 <u>Instruction</u>					
1100 Regular Programs - Elementary / Secondary	164,103,761.59				
1200 Special Programs - Elementary / Secondary	48,748,023.67				
1300 Vocational Education	5,145,890.48				
1400 Other Instructional Programs - Elementary / Secondary	2,705,599.76				
1500 Nonpublic School Programs	21,228.87				
Total Instruction	\$220,724,504.37				
2000 <u>Support Services</u>					
2100 Support Services - Students	15,306,510.98				
2200 Support Services - Instructional Staff	14,118,651.58				
2300 Support Services - Administration	17,402,592.83				
2400 Support Services - Pupil Health	4,624,132.17				
2500 Support Services - Business	1,717,651.57				
2600 Operation and Maintenance of Plant Services	23,288,171.26				
2700 Student Transportation Services	20,811,210.76				
2800 Support Services - Central	4,993,639.42				
2900 Other Support Services	225,526.28				
Total Support Services	\$102,488,086.85				
3000 <u>Operation of Non-Instructional Services</u>					
3200 Student Activities	6,075,152.05				
3300 Community Services	3,131,200.03				
Total Operation of Non-Instructional Services	\$9,206,352.08				
4000 <u>Facilities Acquisition, Construction and Improvement Services</u>					
4500 Building Acquisition and Construction Services - Original and Additional					
Total Facilities Acquisition, Construction and Improvement Services					
5000 <u>Other Expenditures and Financing Uses</u>					
5100 Debt Service / Other Expenditures and Financing Uses	4,432,491.91				
5200 Interfund Transfers - Out	16,581,876.20				
Total Other Expenditures and Financing Uses	\$21,014,368.11				
TOTAL ACTUAL EXPENDITURES & OTHER FINANCING USES	\$353,433,311.41				

LEA : 122092102 Central Bucks SD

Printed 12/1/2022 8:19:39 AM

	<u>Capital Reserve (690.1850)(31)</u>	<u>Capital Reserve (1431)(32)</u>	<u>Other Capital Projects Fund(39)</u>	<u>Debt Service(40)</u>	<u>Permanent(90)</u>
1000 <u>Instruction</u>					
1100 Regular Programs - Elementary / Secondary					
1200 Special Programs - Elementary / Secondary					
1300 Vocational Education			283,604.00		
1400 Other Instructional Programs - Elementary / Secondary					
1500 Nonpublic School Programs					
Total Instruction			\$283,604.00		
2000 <u>Support Services</u>					
2100 Support Services - Students					
2200 Support Services - Instructional Staff			4,581,935.07		
2300 Support Services - Administration					
2400 Support Services - Pupil Health					
2500 Support Services - Business					
2600 Operation and Maintenance of Plant Services			98,580.00		
2700 Student Transportation Services			625,255.12		
2800 Support Services - Central			29,340.00		
2900 Other Support Services					
Total Support Services			\$5,335,110.19		
3000 <u>Operation of Non-Instructional Services</u>					
3200 Student Activities					
3300 Community Services					
Total Operation of Non-Instructional Services					
4000 <u>Facilities Acquisition, Construction and Improvement Services</u>					
4500 Building Acquisition and Construction Services - Original and Additional			10,921,906.28		
Total Facilities Acquisition, Construction and Improvement Services			\$10,921,906.28		
5000 <u>Other Expenditures and Financing Uses</u>					
5100 Debt Service / Other Expenditures and Financing Uses					
5200 Interfund Transfers - Out					
Total Other Expenditures and Financing Uses					
TOTAL ACTUAL EXPENDITURES & OTHER FINANCING USES			\$16,540,620.47		

LEA : 122092102 Central Bucks SD

Printed 12/1/2022 8:19:39 AM

	<u>Total</u>
1000 <u>Instruction</u>	
1100 Regular Programs - Elementary / Secondary	164,103,761.59
1200 Special Programs - Elementary / Secondary	48,748,023.67
1300 Vocational Education	5,429,494.48
1400 Other Instructional Programs - Elementary / Secondary	2,705,599.76
1500 Nonpublic School Programs	21,228.87
Total Instruction	\$221,008,108.37
2000 <u>Support Services</u>	
2100 Support Services - Students	15,306,510.98
2200 Support Services - Instructional Staff	18,700,586.65
2300 Support Services - Administration	17,402,592.83
2400 Support Services - Pupil Health	4,624,132.17
2500 Support Services - Business	1,717,651.57
2600 Operation and Maintenance of Plant Services	23,386,751.26
2700 Student Transportation Services	21,436,465.88
2800 Support Services - Central	5,022,979.42
2900 Other Support Services	225,526.28
Total Support Services	\$107,823,197.04
3000 <u>Operation of Non-Instructional Services</u>	
3200 Student Activities	6,075,152.05
3300 Community Services	3,131,200.03
Total Operation of Non-Instructional Services	\$9,206,352.08
4000 <u>Facilities Acquisition, Construction and Improvement Services</u>	
4500 Building Acquisition and Construction Services - Original and Additional	10,921,906.28
Total Facilities Acquisition, Construction and Improvement Services	\$10,921,906.28
5000 <u>Other Expenditures and Financing Uses</u>	
5100 Debt Service / Other Expenditures and Financing Uses	4,432,491.91
5200 Interfund Transfers - Out	16,581,876.20
Total Other Expenditures and Financing Uses	\$21,014,368.11
TOTAL ACTUAL EXPENDITURES & OTHER FINANCING USES	\$369,973,931.88

LEA : 122092102 Central Bucks SD

Printed 12/1/2022 8:19:47 AM

PSERS Salary Data (Salary Data should relate to the General Fund only)

Amount	Description	Amount
	Total Salary Base for salaries subject to PSERS withholding	170,949,338.78
	Total Federally Funded salaries subject to PSERS withholding	2,164,548.54

Title I Expenditure Data

Amount	Description	Amount
	Expenditures Funded with Current Title I Funds	707,829.20
	Expenditures Funded with Carry over Title I Funds	
Total Title I Expenditure Data		\$707,829.20

Title IV Revenue Data

Amount	Description	Amount
	Revenue from Title IV-A-1: Student Support and Academic Enrichment Grants	27,120.32
	Revenue from Title IV-B: 21st Century Community Learning Centers	

Title V Revenue Data

Amount	Description	Amount
	Revenue from Title V-B-2: Rural and Low-Income School Programs	
	Revenue from Title V-B-1: Small Rural School Achievement (Directly from the Federal Govt)	

LEA : 122092102 Central Bucks SD

1 . <u>Current Special Education Expenditures within Function 1000.\r\nSee list of exclusions in the note below.</u>	209,036,258.00
2 . <u>Current Special Education Expenditures within Function 2000.\r\nSee list of exclusions in the note below.</u>	100,987,752.00
3 . <u>Current Special Education Expenditures within Sub-Function 2100.\r\nThis data should also be included in line 2 above.\r\nSee list of exclusions in the note below.</u>	15,306,511.00
4 . <u>Current Special Education Expenditures within Sub-Function 2200.\r\nThis data should also be included in line 2 above.\r\nSee list of exclusions in the note below.</u>	14,119,652.00
5 . <u>Current Special Education Expenditures within Sub-Function 2700.\r\nThis data should also be included in line 2 above.\r\nSee list of exclusions in the note below.</u>	19,767,080.00
6 . <u>Current Special Education Expenditures within Sub-Function 3100.\r\nSee list of exclusions in the note below.</u>	
7 . <u>Current Special Education Expenditures within Sub-Function 3200.\r\nSee list of exclusions in the note below.</u>	6,045,723.00

Note: The Current Special Education Expenditure amounts for each line should be calculated as follows:

- * Include the total expenditures for special education costs from all funds for the function/sub-function requested
- * Exclude data from sub-functions: 1243,1450,1500,1600,1807,2280,2450,2750,2990
- * Exclude data from objects: 322,511,512,516,561,562,564,566,592,593,594,595,596,597,700,830,899

Benefits for Staff Relative to Collective Bargaining Agreements

	OBJECT	COVERED	NOT COVERED	TOTAL
10 General Fund				
	211 Medical Insurance			
	212 Dental Insurance			
	215 Eye Care Insurance			
	216 Prescription Insurance			
	271 Self-Insurance Medical Benefits	28,104,120.06	1,479,164.21	29,583,284.27
	272 Self-Insurance Dental Benefits	1,313,950.44	69,155.29	1,383,105.73
	275 Self-Insurance Eye Care Benefits			
	276 Self-Insurance Prescription Benefits	6,159,403.61	324,179.14	6,483,582.75
	FUND TOTAL	\$35,577,474.11	\$1,872,498.64	\$37,449,972.75
50 Enterprise Fund	No Self Insurance data to report			
	211 Medical Insurance			
	212 Dental Insurance			
	215 Eye Care Insurance			
	216 Prescription Insurance			
	271 Self-Insurance Medical Benefits			
	272 Self-Insurance Dental Benefits			
	275 Self-Insurance Eye Care Benefits			
	276 Self-Insurance Prescription Benefits			
	FUND TOTAL			
60 Internal Service Fund	No Self Insurance data to report			
	211 Medical Insurance			
	212 Dental Insurance			
	215 Eye Care Insurance			
	216 Prescription Insurance			
	271 Self-Insurance Medical Benefits			
	272 Self-Insurance Dental Benefits			
	275 Self-Insurance Eye Care Benefits			
	276 Self-Insurance Prescription Benefits			
	FUND TOTAL			
Total of All Funds		\$35,577,474.11	\$1,872,498.64	\$37,449,972.75

LEA : 122092102 Central Bucks SD

Printed 12/1/2022 8:20:01 AM

Function	Special Education (Prior Year)	Nonspecial Education (Prior Year)	Total (Prior Year)	Special Education (Current Year)	Nonspecial Education (Current Year)	Total (Current Year)
2120 Guidance Services	2,972,276.73	5,400,333.77	8,372,610.50	3,028,126.08	5,501,806.54	8,529,932.62
2140 Psychological Services	2,032,685.89	225,853.99	2,258,539.88	2,141,052.08	237,894.67	2,378,946.75
2150 Speech Pathology and Audiology Services	2,318,072.48	257,563.61	2,575,636.09	2,266,914.86	251,879.43	2,518,794.29
2160 Social Work Services	2,839.54		2,839.54	3,361.75		3,361.75
2260 Instruction and Curriculum Development Services	118,911.86	2,259,325.38	2,378,237.24	107,788.24	2,047,976.51	2,155,764.75
2350 Legal and Accounting Services	137,220.21	93,015.04	230,235.25	174,782.02	123,480.82	298,262.84
2420 Medical Services						
2440 Nursing Services	1,471,237.46	2,673,093.40	4,144,330.86	1,603,402.54	2,913,224.32	4,516,626.86
2700 Student Transportation Services	1,805,656.48	17,201,253.83	19,006,910.31	1,958,833.65	18,660,467.92	20,619,301.57
Total	\$10,858,900.65	\$28,110,439.02	\$38,969,339.67	\$11,284,261.22	\$29,736,730.21	\$41,020,991.43

LEA : 122092102 Central Bucks SD

(PRINCIPAL AMOUNTS ONLY)								
<u>GOVERNMENTAL FUNDS/ ACTIVITIES</u>	Short-Term Borrowing	General Obligation Bonds/Notes	Authority Building Obligations	OLTD, Ext Term Fin, Leases	Other Post- Employment Benefits (OPEB)	Compensated Absences	Net Pension Liability	Total
1. Debt at Beginning of Fiscal Year		12,095,000.00			101,745,500.00	1,975,668.00	581,562,000.00	697,378,168.00
2. Additional Debt Incurred During Year						616,772.00		616,772.00
3. Retirements and Repayments		3,865,000.00			20,354,911.00		95,697,000.00	119,916,911.00
4. Debt at End of Fiscal Year		8,230,000.00			81,390,589.00	2,592,440.00	485,865,000.00	578,078,029.00
5. Accreted Interest at End Of Fiscal Year		674,750.00						674,750.00
6. Total Debt and Accreted Interest		8,904,750.00			81,390,589.00	2,592,440.00	485,865,000.00	578,752,779.00
7. Current Portion P&I - Due within 1 year		3,894,250.00						3,894,250.00
8. Interest Paid during current fiscal year		550,750.00						550,750.00

(PRINCIPAL AMOUNTS ONLY)							
<u>PROPRIETARY FUNDS</u>							
1. Debt at Beginning of Fiscal Year							
2. Additional Debt Incurred During Year							
3. Retirements and Repayments							
4. Debt at End of Fiscal Year							
5. Accreted Interest at End Of Fiscal Year							
6. Total Debt and Accreted Interest							
7. Current Portion P&I - Due within 1 year							
8. Interest Paid during current fiscal year							

LEA : 122092102 Central Bucks SD

Total Principal and Interest Payments Made by Your School - All Funds

Function	Fund		Principal (910)	Principal (920)	Interest (830)	Total (Principal +Interest)	Misc Other Uses (990)
5110	10	General Fund	3,865,000.00		567,491.91	4,432,491.91	
5110	20	Special Revenue Funds					
5110	30	Capital Projects Funds					
5110	40	Debt Service Fund					
5110	90	Permanent Fund					
5120	10	General Fund					
5120	20	Special Revenue Funds					
5120	30	Capital Projects Funds					
5120	40	Debt Service Fund					
5140	10	General Fund					
5140	20	Special Revenue Funds					
5140	30	Capital Projects Funds					
5140	40	Debt Service Fund					
5140	90	Permanent Fund					
Total Debt Payments - Governmental Funds			\$3,865,000.00		\$567,491.91	\$4,432,491.91	

Function	Fund		Principal (910)	Principal (920)	Interest (830)	Total (Principal +Interest)
5110	50	Enterprise Fund				
5110	60	Internal Service Fund				
5120	50	Enterprise Fund				
5120	60	Internal Service Fund				
5140	50	Enterprise Fund				
5140	60	Internal Service Fund				
Total Debt Payments - Proprietary Funds						

LEA : 122092102 Central Bucks SD

Printed 12/1/2022 8:20:03 AM

Debt Details
Governmental Funds/ Activities

Debt Category	Debt Issue Date (MM/YYYY)	Principal Amounts Only				Current Portion Due Within One Year (Principal and Interest)	Interest Paid During Fiscal Year
		Debt at Beginning of Fiscal Year	Additions	Reductions / Repayments	Debt at End of Fiscal Year		
General Obligation Bonds/Notes – CAB	03/2021	12,095,000.00		3,865,000.00	8,230,000.00	3,894,250.00	550,750.00
Compensated Absences		1,975,668.00	616,772.00		2,592,440.00		
Other Post-Employment Benefits (OPEB)		101,745,500.00		20,354,911.00	81,390,589.00		
Net Pension Liability		581,562,000.00		95,697,000.00	485,865,000.00		
Totals for Debt Entered:		\$697,378,168.00	\$616,772.00	\$119,916,911.00	\$578,078,029.00	\$3,894,250.00	\$550,750.00

LEA : 122092102 Central Bucks SD

Printed 12/1/2022 8:20:03 AM

Accreted Interest Detail
Governmental Funds/ Activities

Debt Category	Debt Issue Date (MM/YYYY)	Beginning Accreted Interest	Additions	Reductions	Ending Accreted Interest	Ending bond Principal	Ending Principal Plus Accreted Interest
General Obligation Bonds/Notes – CAB	03/2021	1,242,250.00		567,500.00	674,750.00	8,230,000.00	8,904,750.00
Totals for Debt Entered:		\$1,242,250.00		\$567,500.00	\$674,750.00	\$8,230,000.00	\$8,904,750.00

LEA : 122092102 Central Bucks SD

Printed 12/1/2022 8:20:08 AM

General Fund (10)

Section 1: Tuition/Purchased Services as Reported within Expenditure Detail	Amount
Tuition Reported in General Fund Expenditures 1000-560	11,843,987.41
Purchased Services in General Fund Expenditures 1000-594 and 1000-597	489.76
Section 1 Total	\$11,844,477.17

Section 2: Tuition Paid to Institution Types During Fiscal Year	Tuition Paid For Nonspecial Education	Tuition Paid For Special Education	Total
1 1306 Institutions	93.42	23,262.36	23,355.78
2 Institutionalized Children's Programs			
3 Juveniles Incarcerated in Adult Facilities	52,806.99	373,055.86	425,862.85
4 Residential Treatment Facilities	68,929.05	184,300.39	253,229.44
5 Other Local Education Agencies	800.49	10,016.88	10,817.37
6 Brick and Mortar Charter Schools	146,094.00	72,282.00	218,376.00
7 Cyber Charter Schools	2,111,838.01	1,044,998.09	3,156,836.10
8 Career and Technology Centers	2,927,860.56	2,208,736.92	5,136,597.48
9 Approved Private Schools		199,676.91	199,676.91
10 PA Chartered Schools for the Deaf and Blind			
11 Private Residential Rehabilitative Institutions	3,216.74	116,937.79	120,154.53
12 Juvenile Detention Centers			
13 Special Program Jointures			
14 Other Tuition Not Included Elsewhere In This Section	190,823.72	2,108,746.99	2,299,570.71
Section 2 Total	\$5,502,462.98	\$6,342,014.19	\$11,844,477.17

LEA : 122092102 Central Bucks SD

Other Capital Projects Fund (39)

Section 1: Tuition/Purchased Services as Reported within Expenditure Detail	Amount
Tuition Reported in Other Capital Projects Fund Expenditures 1000-560	283,604.00
Purchased Services in Other Capital Projects Fund Expenditures 1000-594 and 1000-597	
Section 1 Total	\$283,604.00

Section 2: Tuition Paid to Institution Types During Fiscal Year	Tuition Paid For Nonspecial Education	Tuition Paid For Special Education	Total
1 1306 Institutions			
2 Institutionalized Children's Programs			
3 Juveniles Incarcerated in Adult Facilities			
4 Residential Treatment Facilities			
5 Other Local Education Agencies			
6 Brick and Mortar Charter Schools			
7 Cyber Charter Schools			
8 Career and Technology Centers	161,654.28	121,949.72	283,604.00
9 Approved Private Schools			
10 PA Chartered Schools for the Deaf and Blind			
11 Private Residential Rehabilitative Institutions			
12 Juvenile Detention Centers			
13 Special Program Jointures			
14 Other Tuition Not Included Elsewhere In This Section			
Section 2 Total	\$161,654.28	\$121,949.72	\$283,604.00

1 .	<u>Student Transportation Services for Educational Field Trips</u>	
2 .	<u>Student Transportation Services for Student Activities</u>	
3 .	<u>Rental of Vehicles for Student Transportation Services</u>	
4 .	<u>Capital Reserve Funds</u>	131,598.00

Include only district-owned transportation expenditures paid from State or local money.
DO NOT include federal expenditures or payments to contract service providers.
Contracted transportation services should not be recorded on this schedule.

LEA : 122092102 Central Bucks SD

Printed 12/1/2022 8:20:17 AM

Food Service / Cafeteria Operations Fund (51)

3000 Operation of Non-Instructional Services		<u>Total</u>
300 <u>Purchased Professional and Technical Services</u>		
329 Professional Educational Services – Other		23,656.44
340 Technical Services		1,700.00
Total Purchased Professional and Technical Services		\$25,356.44
400 <u>Purchased Property Services</u>		
430 Repairs and Maintenance Services		499,576.00
Total Purchased Property Services		\$499,576.00
500 <u>Other Purchased Services</u>		
570 Food Service Management		7,314,979.04
Total Other Purchased Services		\$7,314,979.04
600 <u>Supplies</u>		
610 General Supplies		67,176.00
Total Supplies		\$67,176.00
700 <u>Property</u>		
740 Depreciation		53,142.00
Total Property		\$53,142.00
Total 3000 Operation of Non-Instructional Services		\$7,960,229.48

LEA : 122092102 Central Bucks SD

Printed 12/1/2022 8:20:17 AM

Food Service / Cafeteria Operations Fund (51)

3100 Food Services	<u>Elementary</u>	<u>Secondary</u>	<u>Federal</u>	<u>Total</u>
300 <u>Purchased Professional and Technical Services</u>				
329 Professional Educational Services – Other				23,656.44
340 Technical Services				1,700.00
Total Purchased Professional and Technical Services				\$25,356.44
400 <u>Purchased Property Services</u>				
430 Repairs and Maintenance Services				499,576.00
Total Purchased Property Services				\$499,576.00
500 <u>Other Purchased Services</u>				
570 Food Service Management				7,314,979.04
Total Other Purchased Services				\$7,314,979.04
600 <u>Supplies</u>				
610 General Supplies				67,176.00
Total Supplies				\$67,176.00
700 <u>Property</u>				
740 Depreciation				53,142.00
Total Property				\$53,142.00
Total 3100 Food Services				\$7,960,229.48

	<u>Food Service(51)</u>	<u>Child Care Operations(52)</u>	<u>Other Enterprise(58)</u>	<u>Internal Service(60)</u>	<u>Total</u>
3000 <u>Operation of Non-Instructional Services</u>					
3100 Food Services	7,960,229.48				7,960,229.48
Total Operation of Non-Instructional Services	\$7,960,229.48				\$7,960,229.48
TOTAL ACTUAL EXPENDITURES & OTHER FINANCING USES	\$7,960,229.48				\$7,960,229.48

LEA : 122092102 Central Bucks SD

Printed 12/1/2022 8:20:30 AM

Fund	School	School Number	Local Personnel	Local Nonpersonnel	State Personnel	State Nonpersonnel	Federal Personnel	Federal Nonpersonnel	Total	Explanation
10										
	Barclay El Sch	4683	7,908,457.00	1,355,950.00	2,095,848.00	359,345.00	509,347.00	113,428.00	12,342,375.00	
	Bridge Valley El Sch	7796	8,430,243.00	1,395,449.00	2,234,128.00	369,813.00	70,035.00	104,894.00	12,604,562.00	
	Buckingham El Sch	1044	5,617,056.00	884,403.00	1,488,596.00	234,379.00	46,553.00	69,725.00	8,340,712.00	
	Butler El Sch	1081	9,782,121.00	1,593,278.00	2,592,394.00	422,240.00	83,775.00	125,473.00	14,599,281.00	
	Central Bucks HS-East	5133	18,463,207.00	3,020,551.00	4,893,000.00	800,487.00	206,305.00	124,792.00	27,508,342.00	
	Central Bucks HS-South	7790	21,396,555.00	3,795,845.00	5,670,377.00	1,005,950.00	256,503.00	155,157.00	32,280,387.00	
	Central Bucks HS-West	1043	18,404,787.00	3,319,390.00	4,877,518.00	879,683.00	224,478.00	135,785.00	27,841,641.00	
	Cold Spring El Sch	7435	6,193,067.00	943,413.00	1,641,247.00	250,017.00	48,911.00	73,257.00	9,149,912.00	
	Doyle El Sch	4852	5,553,981.00	865,243.00	1,471,880.00	229,301.00	95,263.00	67,114.00	8,282,782.00	
	Gayman El Sch	1048	5,125,081.00	810,272.00	1,358,216.00	214,733.00	42,657.00	63,889.00	7,614,848.00	
	Groveland El Sch	7653	9,773,101.00	1,607,698.00	2,590,004.00	426,062.00	373,613.00	171,288.00	14,941,766.00	
	Holicong MS	5307	12,088,722.00	1,964,419.00	3,203,675.00	520,598.00	142,403.00	86,138.00	18,005,955.00	
	Jamison El Sch	7520	6,771,578.00	1,083,379.00	1,794,560.00	287,110.00	57,217.00	85,697.00	10,079,541.00	
	Kutz El Sch	1047	6,233,728.00	951,313.00	1,652,022.00	252,111.00	49,629.00	74,332.00	9,213,135.00	
	Lenape MS	1041	11,062,537.00	1,789,299.00	2,931,722.00	474,189.00	128,996.00	78,029.00	16,464,772.00	
	Linden El Sch	1057	5,011,045.00	772,186.00	1,327,995.00	204,640.00	72,776.00	60,510.00	7,449,152.00	
	Mill Creek El Sch	7654	8,749,947.00	1,455,848.00	2,318,854.00	385,819.00	73,931.00	110,730.00	13,095,129.00	
	Pine Run El Sch	5306	6,067,171.00	948,311.00	1,607,882.00	251,315.00	49,527.00	74,178.00	8,998,384.00	
	Tamanend MS	1042	10,568,317.00	1,797,506.00	2,800,747.00	476,363.00	125,273.00	75,776.00	15,843,982.00	
	Titus El Sch	1131	6,985,527.00	1,147,007.00	1,851,259.00	303,972.00	110,522.00	94,581.00	10,492,868.00	
	Tohickon MS	7715	11,092,929.00	1,975,970.00	2,939,776.00	523,659.00	130,784.00	79,110.00	16,742,228.00	
	Unami MS	4678	9,714,932.00	1,684,441.00	2,574,588.00	446,400.00	120,059.00	72,623.00	14,613,043.00	
	Warwick El Sch	1132	6,467,164.00	1,006,788.00	1,713,886.00	266,812.00	70,958.00	80,168.00	9,605,776.00	
Total			217,461,253.00	36,167,959.00	57,630,174.00	9,584,998.00	3,089,515.00	2,176,674.00	326,110,573.00	

	<u>Nonspecial Education</u>	<u>Special Education</u>
1000 <u>Instruction</u>		
1100 Regular Programs - Elementary / Secondary	24,004.00	197,028.00
Total Instruction	\$24,004.00	\$197,028.00
2000 <u>Support Services</u>		
2200 Support Services - Instructional Staff	12.00	100.00
2800 Support Services - Central	3.00	28.00
Total Support Services	\$15.00	\$128.00
5000 <u>Other Expenditures and Financing Uses</u>		
5200 Interfund Transfers - Out	961.00	7,886.00
Total Other Expenditures and Financing Uses	\$961.00	\$7,886.00
TOTAL ACTUAL EXPENDITURES & OTHER FINANCING USES	\$24,980.00	\$205,042.00

LEA : 122092102 Central Bucks SD

Printed 12/1/2022 8:20:39 AM

1000 Instruction

100 <u>Personnel Services - Salaries</u>		
100 Personnel Services - Salaries	13,966.00	114,633.00
Total Personnel Services - Salaries	\$13,966.00	\$114,633.00
200 <u>Personnel Services - Employee Benefits</u>		
220 Social Security Contributions	999.00	8,204.00
230 PSERS Retirement Contributions	4,848.00	39,796.00
260 Workers' Compensation	210.00	1,719.00
270 Group Insurance - Self-Insurance	3,771.00	30,955.00
299 All Other Employee Benefits	24.00	197.00
Total Personnel Services - Employee Benefits	\$9,852.00	\$80,871.00
300 <u>Purchased Professional and Technical Services</u>		
340 Technical Services	166.00	1,363.00
Total Purchased Professional and Technical Services	\$166.00	\$1,363.00
400 <u>Purchased Property Services</u>		
430 Repairs and Maintenance Services	8.00	67.00
440 Rentals	1.00	4.00
Total Purchased Property Services	\$9.00	\$71.00
500 <u>Other Purchased Services</u>		
530 Communications	4.00	32.00
580 Travel	2.00	16.00
Total Other Purchased Services	\$6.00	\$48.00
600 <u>Supplies</u>		
610 General Supplies	3.00	28.00
640 Books and Periodicals		1.00
Total Supplies	\$3.00	\$29.00
800 <u>Other Objects</u>		
810 Dues and Fees	2.00	13.00
Total Other Objects	\$2.00	\$13.00
Total 1000 Instruction	\$24,004.00	\$197,028.00

LEA : 122092102 Central Bucks SD

Printed 12/1/2022 8:20:39 AM

1100 Regular Programs - Elementary / Secondary

	<u>Nonspecial Education</u>	<u>Special Education</u>
100 <u>Personnel Services - Salaries</u>		
100 Personnel Services - Salaries	13,966.00	114,633.00
Total Personnel Services - Salaries	\$13,966.00	\$114,633.00
200 <u>Personnel Services - Employee Benefits</u>		
220 Social Security Contributions	999.00	8,204.00
230 PSERS Retirement Contributions	4,848.00	39,796.00
260 Workers' Compensation	210.00	1,719.00
270 Group Insurance - Self-Insurance	3,771.00	30,955.00
299 All Other Employee Benefits	24.00	197.00
Total Personnel Services - Employee Benefits	\$9,852.00	\$80,871.00
300 <u>Purchased Professional and Technical Services</u>		
340 Technical Services	166.00	1,363.00
Total Purchased Professional and Technical Services	\$166.00	\$1,363.00
400 <u>Purchased Property Services</u>		
430 Repairs and Maintenance Services	8.00	67.00
440 Rentals	1.00	4.00
Total Purchased Property Services	\$9.00	\$71.00
500 <u>Other Purchased Services</u>		
530 Communications	4.00	32.00
580 Travel	2.00	16.00
Total Other Purchased Services	\$6.00	\$48.00
600 <u>Supplies</u>		
610 General Supplies	3.00	28.00
640 Books and Periodicals		1.00
Total Supplies	\$3.00	\$29.00
800 <u>Other Objects</u>		
810 Dues and Fees	2.00	13.00
Total Other Objects	\$2.00	\$13.00
Total 1100 Regular Programs - Elementary / Secondary	\$24,004.00	\$197,028.00

LEA : 122092102 Central Bucks SD

Printed 12/1/2022 8:20:39 AM

1110 Regular Programs

	<u>Nonspecial Education</u>	<u>Special Education</u>
100 <u>Personnel Services - Salaries</u>		
100 Personnel Services - Salaries	13,966.00	114,633.00
Total Personnel Services - Salaries	\$13,966.00	\$114,633.00
200 <u>Personnel Services - Employee Benefits</u>		
220 Social Security Contributions	999.00	8,204.00
230 PSERS Retirement Contributions	4,848.00	39,796.00
260 Workers' Compensation	210.00	1,719.00
270 Group Insurance - Self-Insurance	3,771.00	30,955.00
299 All Other Employee Benefits	24.00	197.00
Total Personnel Services - Employee Benefits	\$9,852.00	\$80,871.00
300 <u>Purchased Professional and Technical Services</u>		
340 Technical Services	166.00	1,363.00
Total Purchased Professional and Technical Services	\$166.00	\$1,363.00
400 <u>Purchased Property Services</u>		
430 Repairs and Maintenance Services	8.00	67.00
440 Rentals	1.00	4.00
Total Purchased Property Services	\$9.00	\$71.00
500 <u>Other Purchased Services</u>		
530 Communications	4.00	32.00
580 Travel	2.00	16.00
Total Other Purchased Services	\$6.00	\$48.00
600 <u>Supplies</u>		
610 General Supplies	3.00	28.00
640 Books and Periodicals		1.00
Total Supplies	\$3.00	\$29.00
800 <u>Other Objects</u>		
810 Dues and Fees	2.00	13.00
Total Other Objects	\$2.00	\$13.00
Total 1110 Regular Programs	\$24,004.00	\$197,028.00

LEA : 122092102 Central Bucks SD

Printed 12/1/2022 8:20:39 AM

2000 Support Services

200 <u>Personnel Services - Employee Benefits</u>		
240 Tuition Reimbursement	12.00	100.00
Total Personnel Services - Employee Benefits	\$12.00	\$100.00
500 <u>Other Purchased Services</u>		
580 Travel	3.00	28.00
Total Other Purchased Services	\$3.00	\$28.00
Total 2000 Support Services	\$15.00	\$128.00

LEA : 122092102 Central Bucks SD

Printed 12/1/2022 8:20:39 AM

2200 Support Services - Instructional Staff	<u>Nonspecial Education</u>	<u>Special Education</u>
200 <u>Personnel Services - Employee Benefits</u>		
240 Tuition Reimbursement	12.00	100.00
Total Personnel Services - Employee Benefits	\$12.00	\$100.00
Total 2200 Support Services - Instructional Staff	\$12.00	\$100.00

LEA : 122092102 Central Bucks SD

Printed 12/1/2022 8:20:39 AM

2270 Instructional Staff Professional Development Services	<u>Nonspecial Education</u>	<u>Special Education</u>
200 <u>Personnel Services - Employee Benefits</u>		
240 Tuition Reimbursement	12.00	100.00
Total Personnel Services - Employee Benefits	\$12.00	\$100.00
Total 2270 Instructional Staff Professional Development Services	\$12.00	\$100.00

LEA : 122092102 Central Bucks SD

Printed 12/1/2022 8:20:39 AM

2800 Support Services - Central	<u>Nonspecial Education</u>	<u>Special Education</u>
500 <u>Other Purchased Services</u>		
580 Travel	3.00	28.00
Total Other Purchased Services	\$3.00	\$28.00
Total 2800 Support Services - Central	\$3.00	\$28.00

LEA : 122092102 Central Bucks SD

Printed 12/1/2022 8:20:39 AM

2830 Staff Services	<u>Nonspecial Education</u>	<u>Special Education</u>
500 <u>Other Purchased Services</u>		
580 Travel	3.00	28.00
Total Other Purchased Services	\$3.00	\$28.00
Total 2830 Staff Services	\$3.00	\$28.00

LEA : 122092102 Central Bucks SD

Printed 12/1/2022 8:20:39 AM

2836 Staff Development Services - Non-Instructional, Non-Certified Staff Only	<u>Nonspecial Education</u>	<u>Special Education</u>
500 <u>Other Purchased Services</u>		
580 Travel	3.00	28.00
Total Other Purchased Services	\$3.00	\$28.00
Total 2836 Staff Development Services - Non-Instructional, Non-Certified Staff Only	\$3.00	\$28.00

LEA : 122092102 Central Bucks SD

Printed 12/1/2022 8:20:39 AM

5000 Other Expenditures and Financing Uses

900 <u>Other Uses of Funds</u>		
939 Other Fund Transfers	961.00	7,886.00
Total Other Uses of Funds	\$961.00	\$7,886.00
Total 5000 Other Expenditures and Financing Uses	\$961.00	\$7,886.00

LEA : 122092102 Central Bucks SD

Printed 12/1/2022 8:20:39 AM

5200 Interfund Transfers - Out	<u>Nonspecial Education</u>	<u>Special Education</u>
900 <u>Other Uses of Funds</u>		
939 Other Fund Transfers	961.00	7,886.00
Total Other Uses of Funds	\$961.00	\$7,886.00
Total 5200 Interfund Transfers - Out	\$961.00	\$7,886.00

LEA : 122092102 Central Bucks SD

Printed 12/1/2022 8:20:39 AM

5210 General Fund Transfers	<u>Nonspecial Education</u>	<u>Special Education</u>
900 <u>Other Uses of Funds</u>		
939 Other Fund Transfers	961.00	7,886.00
Total Other Uses of Funds	\$961.00	\$7,886.00
Total 5210 General Fund Transfers	\$961.00	\$7,886.00

LEA : 122092102 Central Bucks SD

Printed 12/1/2022 8:20:43 AM

	<u>Nonspecial Education</u>	<u>Special Education</u>
7000 Revenue from State Sources		
Total Revenue from State Sources	\$2,925	\$24,000
8000 Revenue from Federal Sources		
Total Revenue from Federal Sources	\$1	\$0
9000 Other Financing Sources		
Total Other Financing Sources	\$1	\$0
Total	\$2,927	\$24,000
TOTAL REVENUES	\$2,927	\$24,000

LEA : 122092102 Central Bucks SD

Printed 12/1/2022 8:20:49 AM

	<u>Nonspecial Education</u>	<u>Special Education</u>
7000 Revenue from State Sources		
7111 Basic Education Funding-Formula	1	0
7810 State Share of Social Security and Medicare Taxes	500	4,102
7820 State Share of Retirement Contributions	2,424	19,898
Total Revenue from State Sources	\$2,925	\$24,000
8000 Revenue from Federal Sources		
8110 Payments for Federally Impacted Areas	1	0
Total Revenue from Federal Sources	\$1	\$0
9000 Other Financing Sources		
9110 Face Value of Bonds Issued	1	0
Total Other Financing Sources	\$1	\$0
TOTAL	\$2,927	\$24,000
TOTAL REVENUES	\$2,927	\$24,000